



STARMES

SIZDIRMAZLIK ELM. SAN. ve TİC. LTD. ŞTİ.



0212 876 27 78 / 0539 626 78 17



www.starmessizdirmazlik.com



info@starmessizdirmazlik.com



Osmaniyeler mah. Mermerciler San. Sit. 1 Cadde No 16 /5 Beylikdüzü / İstanbul



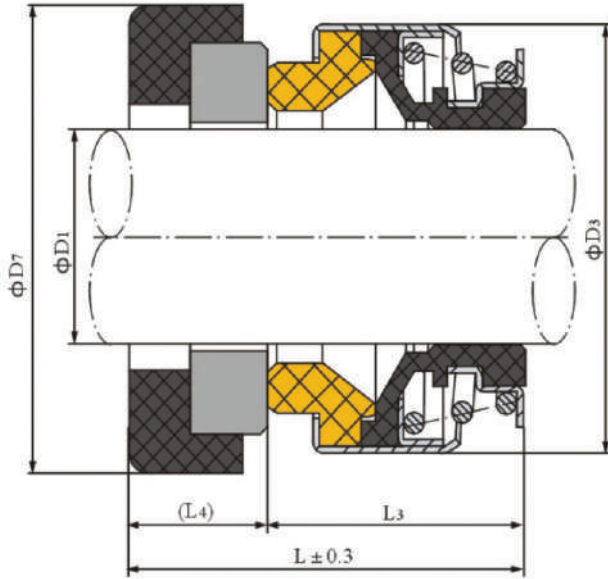
Uygulamalar

Sıcaklık: -20~100°C

Basınç: ≤ 0,5 Mpa

Çevresel Hız: 10 m/s

Temiz su pompaları ve sirkülasyon pompalarında kullanılır .



D ₁	D ₃	D ₇	L	L ₃	L ₄
6	18.0	22.0	15.0	11.0	4.0
7	18.0	22.0	15.0	11.0	4.0
8	18.0	22.0	15.0	11.0	4.0
8	24.0	26.0	19.0	11.0	8.0
10	24.0	26.0	21.0	13.0	8.0
11	24.0	26.0	21.0	13.0	8.0
12	24.0	26.0	21.0	13.0	8.0
13	24.0	26.0	18.5	13.0	5.5
13	27.5	28.5	21.0	13.0	8.0
14	27.5	28.5	21.0	13.0	8.0
14	32.0	29.5	21.0	13.5	8.0
15	27.5	30.0	21.0	13.0	8.0
15	32.0	29.5	21.0	13.5	8.0
16	27.5	30.0	21.0	13.0	8.0
16	32.0	29.5	21.0	13.5	8.0
16	39.0	42.0	21.0	13.0	8.0
17	39.0	42.0	21.0	13.0	8.0
18	39.0	42.0	21.0	13.0	8.0
19	39.0	42.0	21.0	13.0	8.0
20	35.0	38.0	21.0	13.0	8.0
20	39.0	42.0	21.0	13.0	8.0
20	42.0	45.0	23.0	13.0	10.0
22	39.0	42.0	21.0	13.0	8.0
22	42.0	45.0	23.0	13.0	10.0
23	47.0	50.0	23.5	13.5	10.0
24	47.0	50.0	23.5	13.5	10.0
25	47.0	50.0	23.5	13.5	10.0
25	42.0	45.0	23.0	13.0	10.0
26	47.0	50.0	23.5	13.5	10.0
27	47.0	50.0	23.5	13.5	10.0
28	54.0	57.0	25.0	15.0	10.0
30	54.0	57.0	25.0	15.0	10.0
32	54.0	57.0	25.0	15.0	10.0
35	60.0	63.0	26.0	16.0	10.0
38	65.0	68.0	30.0	18.0	12.0
40	65.0	68.0	30.0	18.0	12.0
45	70.0	73.0	32.0	20.0	12.0
50	85.0	88.0	38.0	23.0	15.0
55	85.0	88.0	38.0	23.0	15.0
60	105.0	110.0	45.0	30.0	15.0
65	105.0	110.0	45.0	30.0	15.0
70	105.0	110.0	47.0	32.0	15.0



Uygulamalar

Sıcaklık: -40~150 °C

Basınç: ≤ 0,8 MPa

Çevresel hız: ≤ 10m/s

Ortam: Yağ, su ve genel korozif akışkanlar

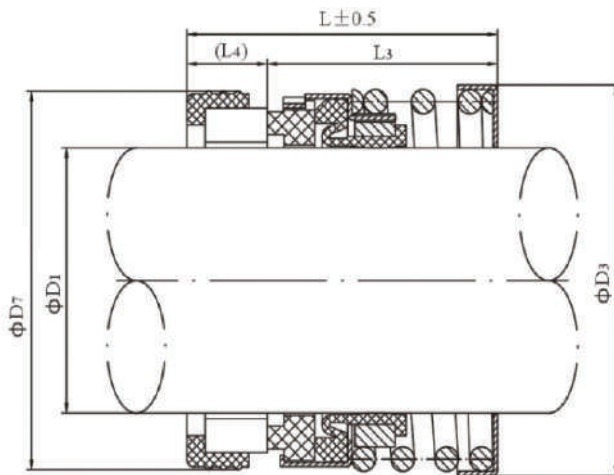
Uygulamalar:

Oto-soğutma pompaları, santrifüj pompalar, dalgıç pompalar ve genel endüstriyel pompalar için kullanılır.

Tasarım Özellikleri

*Kösteksiz, tek sarımlı, kendinden hizalama özelliğine sahip yayla mil sapmalarını kompanse eder.

*Birçok tasarım ve spesifikasyon için uygundur.



D1	D3	D7	L	L3	L4
16	26.5	27	36.0	25.7	10.3
18	30.5	33	37.5	27.2	10.3
20	34.0	35	37.5	27.2	10.3
22	34.0	37	38.2	27.2	11.0
24	40.0	39	40.0	29.0	11.0
25	40.0	40	40.0	29.0	11.0
28	44.5	43	42.5	31.5	11.0
30	46.5	45	42.5	31.5	11.0
32	46.5	48	42.5	31.5	11.0
33	50.5	48	42.5	31.5	11.0
35	51.5	50	42.5	31.5	11.0
38	54.0	56	45.0	34.0	11.0
40	58.0	58	45.0	32.3	12.7
43	61.5	61	45.0	32.3	12.7
45	61.5	63	45.0	32.3	12.7
48	65.5	66	45.0	32.3	12.7
50	70.5	70	47.5	34.8	12.7
53	74.0	73	47.5	33.3	13.5
55	76.0	75	47.5	33.3	14.2
58	79.0	78	52.5	38.3	14.2
60	82.0	80	52.5	38.3	14.2
63	87.0	83	52.5	38.3	14.2
65	85.0	85	52.0	36.0	16.0
68	91.5	90	52.0	36.0	16.0
70	91.5	92	60.0	44.0	16.0
73	99.0	93	60.0	44.0	16.0
75	99.0	97	60.0	44.0	16.0



Uygulamalar

Şıcaklık: -40~150°C
 Basınç: ≤ 0,8 Mpa
 Çevresel Hız: 10 m/s

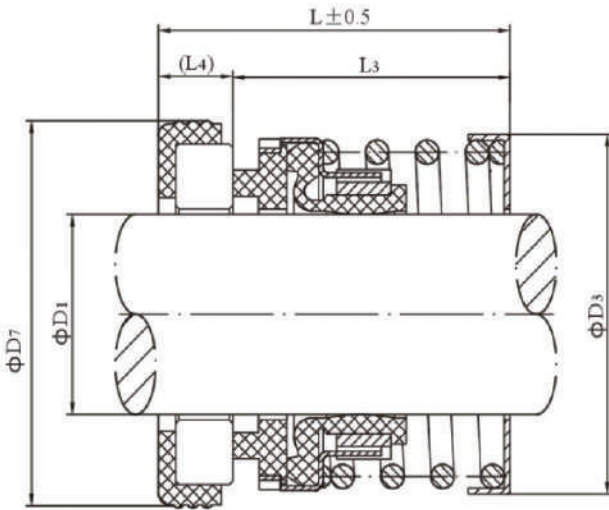
Ortam: Yağ, su, genel korozif akışkanlar

Uygulamalar:

Oto-soğutma pompalarında, santrifuj pompalarda, dalgıç pompalarda, genel endüstriyel pompalarda kullanılır.

Tasarım Özellikleri

*Kösteksiz, tek sarımlı, kendinden hizalama özelliğine sahip yayla mil sapmalarını kompanse eder.
 *Birçok spesifikasyon ve tasarım için uygundur.



D1	D3	D7	L	L3	L4
8	17.5	21	18.9	13.9	5.0
10	23.5	24	23.0	16.5	6.5
11	23.5	24	23.0	16.5	6.5
12	26.0	26	24.0	17.5	6.5
14	28.0	28	25.0	18.0	7.0
15	28.0	28	25.0	18.0	7.0
16	30.0	32	27.0	20.0	7.0
18	32.5	35	26.0	19.0	7.0
19	32.5	35	26.0	18.0	8.0
20	35.5	38	28.0	19.5	8.5
22	37.5	40	28.0	20.0	8.0
25	42.0	44	29.0	20.0	9.0
28	45.5	46	30.0	21.0	9.0
30	48.0	50	31.0	22.0	9.0
32	50.0	54	33.0	24.0	9.0
35	54.5	58	36.0	26.0	10.0
38	58.5	60	37.0	27.0	10.0
40	62.5	64	38.0	28.0	10.0
45	66.5	66	40.0	30.0	10.0
50	72.5	72	42.0	32.0	10.0



Uygulamalar

Sıcaklık: -40~150 °C

Basınç: ≤0,7 MPa

Çevresel hız: ≤10m/s

Ortam: Yağ, su ve genel korozif akışkanlar

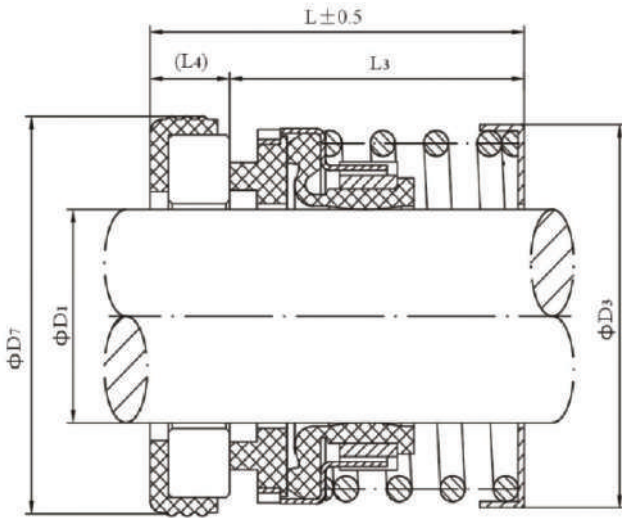
Uygulamalar:

Oto-soğutma pompaları, santrifüj pompalar, dalgıç pompalar ve genel endüstriyel pompalar için kullanılır.

Tasarım Özellikleri

*Kösteksiz, tek sarımlı, kendinden hizalama özelliğine sahip yayla mil sapmalarını kompanse eder.

*Birçok tasarım ve spesifikasyon için uygundur.



	D ₁	D ₃	D ₇	L	L ₃	L ₄
3/8"	9.53		22.2	28.5	22.2	6.3
1/2"	12.70	23.0	25.4	30.2	22.2	8.0
5/8"	15.88	26.5	31.8	32.5	22.2	10.3
3/4"	19.05	30.5	35.0	32.5	22.2	10.3
7/8"	22.23	34.0	38.1	34.3	24.0	10.3
1"	25.40	40.0	41.3	36.4	25.4	11.0
1 1/8"	28.58	44.5	44.5	38.0	27.0	11.0
1 1/4"	31.75	46.5	47.7	38.0	27.0	11.0
1 3/8"	34.93	51.5	50.8	39.5	28.5	11.0
1 1/2"	38.10	54.0	54.0	39.5	28.5	11.0
1 5/8"	41.28	58.0	60.3	47.7	35.0	12.7
1 3/4"	44.45	61.5	63.5	47.7	35.0	12.7
1 7/8"	47.63	65.5	66.7	50.7	38.0	12.7
2"	50.80	70.5	69.9	50.7	38.0	12.7
2 1/8"	53.98	75.0	76.2	57.3	43.0	14.3
2 1/4"	57.15	79.0	79.4	57.3	43.0	14.3
2 3/8"	60.33	82.0	82.6	60.3	46.0	14.3
2 1/2"	63.50	86.0	85.7	60.3	46.0	14.3
2 5/8"	66.68	91.5	85.7	65.0	49.0	16.0
2 3/4"	69.85	91.5	88.9	65.0	49.0	16.0
2 7/8"	73.03	99.0	95.3	68.5	52.5	16.0
3"	76.20	99.0	98.4	68.5	52.5	16.0



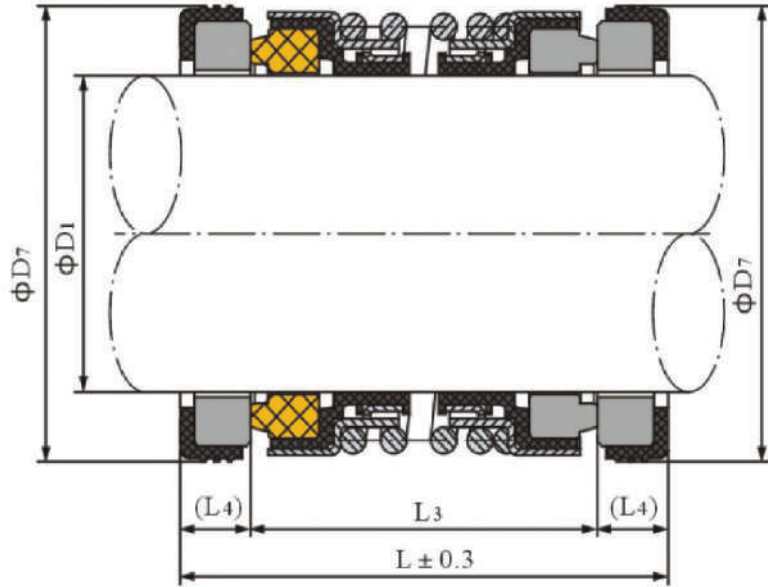
Uygulamalar

Sıcaklık: -20~100°C

Basınç: ≤0,8 MPa

Çevresel hız: 5m/s

Dalgıç ve atıksu pompalarında kullanılmaktadır.



D ₁	D ₇	L	L ₃	L ₄
10	21	30	20	5.0
12	26	30	20	5.0
14	28	38	28	5.0
16	28	38	28	5.0
18	33	38	28	5.0
20	35	40	30	5.0
25	40	48	32	8.0
30	45	51	35	8.0
35	50	51	35	8.0



Uygulamalar

Sıcaklık: -40~150 °C

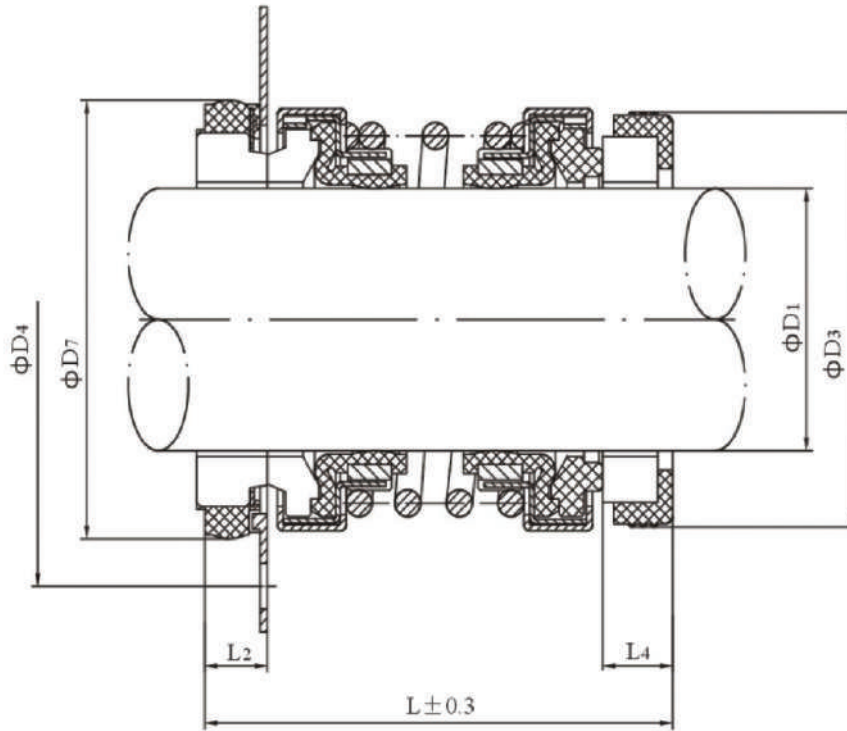
Basınç: ≤0,8MPa

Çevresel hız: ≤13m/s

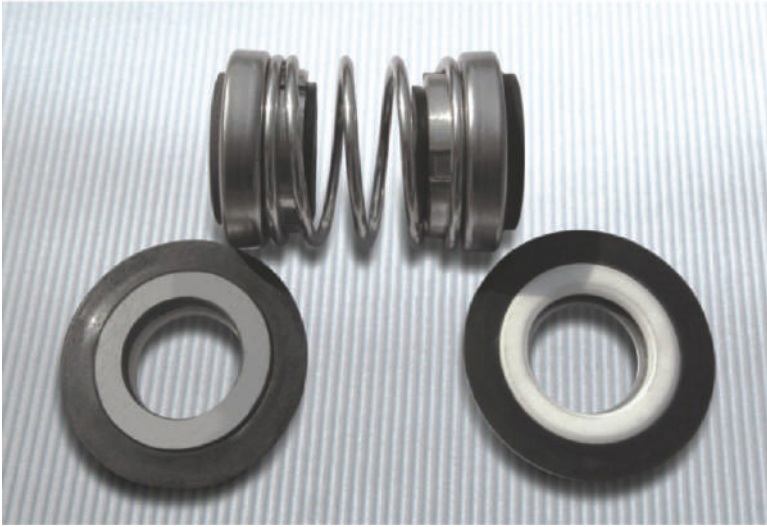
Ortam:

Yağ, su ve genel korozif akışkanlar

Oto-soğutma pompalarında, mikserler ve döner tüm ekipmanlarda kullanılır.



D ₁	D ₃	D ₇	D ₅	D ₄	L	L ₂	L ₄
14	30	30	-	-	36	4	4
15	30	30	-	-	36	4	4
16	30	30	-	-	36	4	4
20	38	38	60	50	49	7	8
25	44	44	70	58	51	7	8.5
30	50	57	82	70	61	9	5.3
35	57	58	82	70	61	8.5	9.5
40	68	70	100	85	65	10.1	10
45	68	70	105	90	65	10.1	10



Uygulamalar

Sıcaklık: -40~150 °C

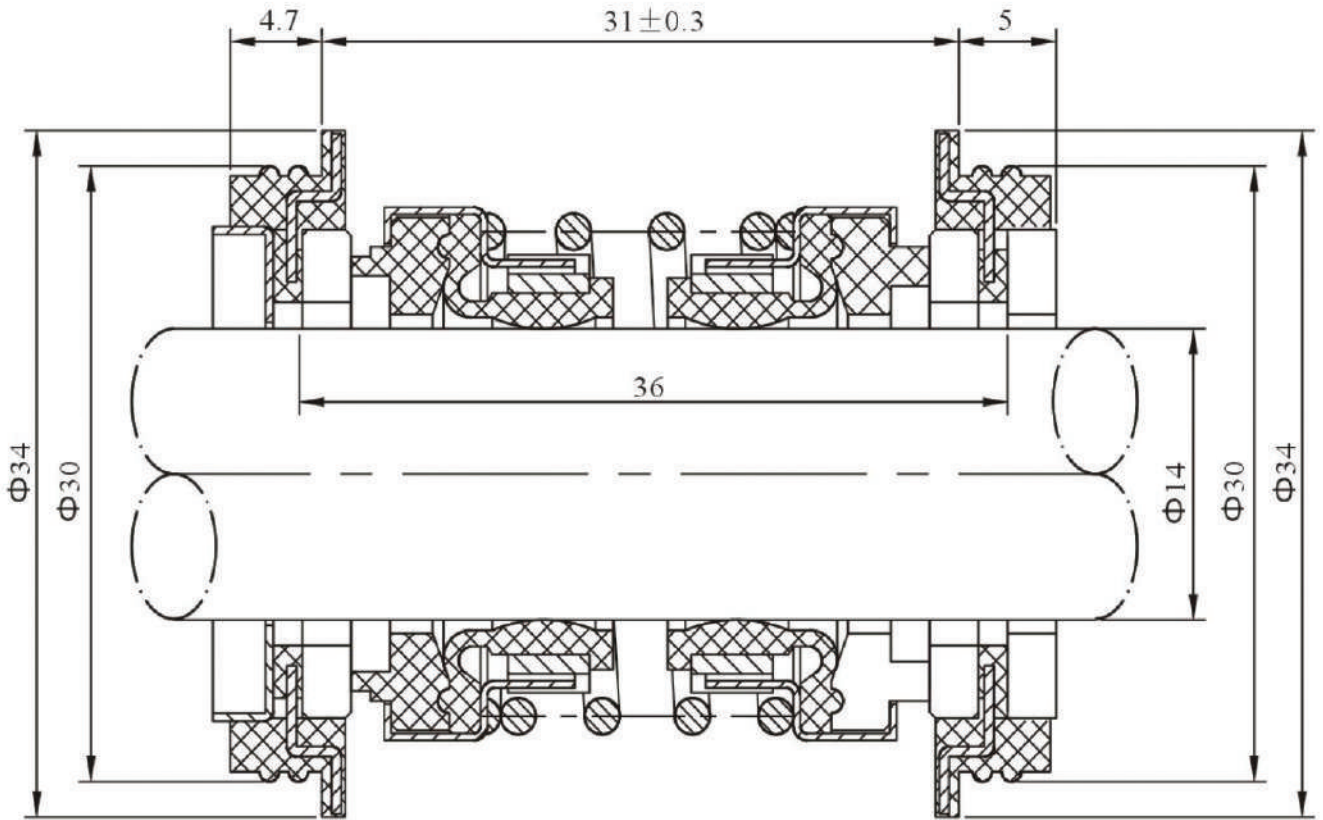
Basınç: ≤0,8MPa

Çevresel hız: ≤13m/s

Ortam:

Yağ, su ve genel korozif akışkanlar

Oto-soğutma pompalarında, mikserler ve döner tüm ekipmanlarda kullanılır.





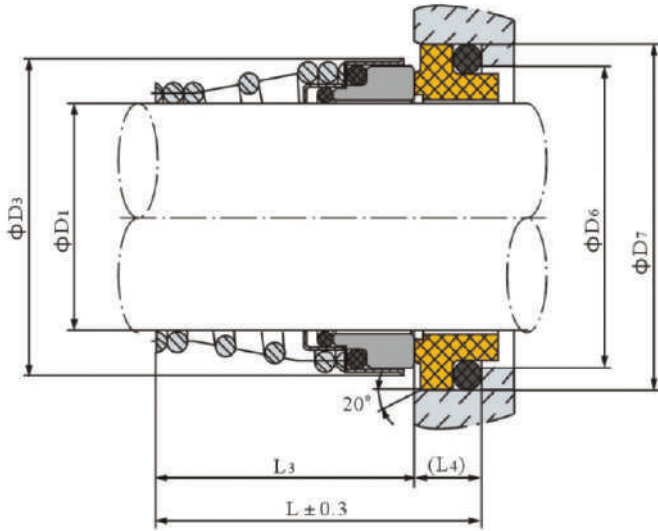
Uygulamalar

Sıcaklık:-20~100 °C

Basınç:≤0,7 MPa

Çevresel hız:≤13m/s

Temiz su pompaları, sirkülasyon pompalarında kullanılır.



D ₁	D ₃	D ₆	D ₇	L	L ₃	L ₄
10	20.0	14.0	18.1	20.5	15	5.5
11	22.0	16.5	20.6	23.5	18	5.5
12	22.0	16.5	20.6	23.5	18	5.5
13	25.0	19.0	23.1	28.0	22	6.0
14	25.0	19.0	23.1	28.0	22	6.0
15	29.0	21.0	26.9	29.0	22	7.0
16	29.0	21.0	26.9	30.0	23	7.0
17	29.0	21.0	26.9	30.0	23	7.0
18	33.0	25.0	30.9	32.0	24	8.0
19	33.0	25.0	30.9	33.0	25	8.0
20	33.0	25.0	30.9	33.0	25	8.0
21	38.0	30.0	35.4	33.0	25	8.0
22	38.0	30.0	35.4	33.0	25	8.0
23	38.0	30.0	35.4	35.0	27	8.0
24	38.0	30.0	35.4	35.0	27	8.0
25	40.0	33.0	38.2	35.0	27	8.5
28	46.0	38.0	43.3	38.0	29	9.0
29	46.0	38.0	43.3	39.0	30	9.0
30	46.0	38.0	43.3	39.0	30	9.0
32	46.0	38.0	43.3	39.0	30	9.0
33	48.0	45.0	53.5	50.5	39	11.5
35	50.0	45.0	53.5	50.5	39	11.5
38	58.0	52.0	60.5	50.5	39	11.5
40	58.0	52.0	60.5	50.5	39	11.5



Uygulamalar

Sıcaklık: -20~100°C

Basınç: ≤0,8MPa

Çevresel hız: ≤10m/s

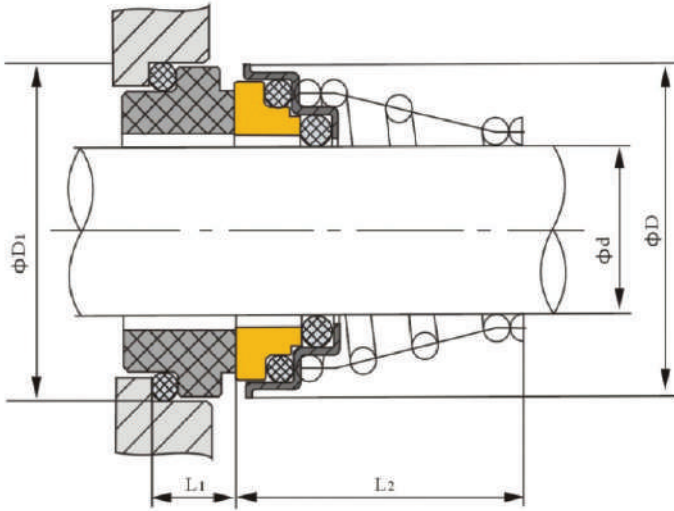
Temiz su pompaları, sirkülasyon pompalarında kullanılır.

Malzemeler

*Sabit ring: Karbon/Silisyum/Tungsten Karbür

*Döner ring: Seramik/Silisyum/Tungsten Karbür

*Sekonder keçe: NBR/EPDM/Viton



d	D	D1	L1	L2
10	20	21	7	15.2
12	22	23	7	18.2
14	25	25	7	22.2
16	29	27	7	23.2
18	33	33	10	24.2
20	33	35	10	25.2
22	38	37	10	25.2
24	38	39	10	27.2
25	40	40	10	27.2
28	46	43	10	29.2
30	46	45	10	30.2
32	46	48	10	30.2
33	48	48	10	39.2
35	50	50	10	39.2
38	56	56	13	42.2
40	58	58	13	42.2



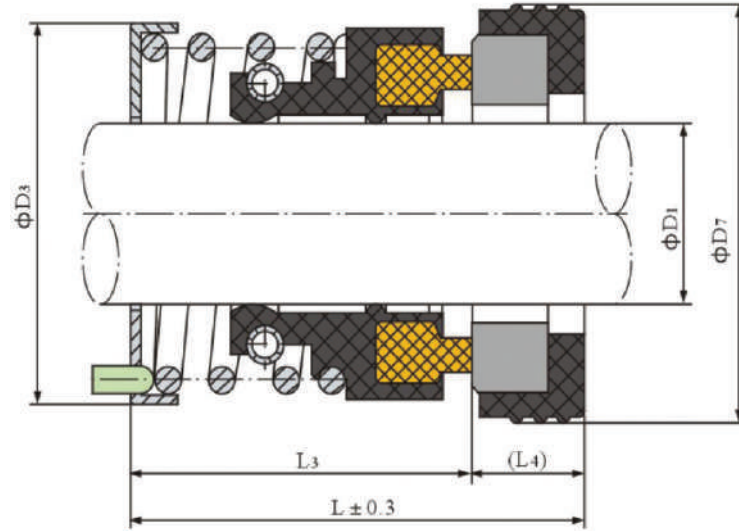
Uygulamalar

Sıcaklık: -20~100 °C

Basınç: ≤0,5MPa

Çevresel hız: ≤5m/s

Temiz su pompaları, sirkülasyon pompaları, genel endüstriyel pompalarda kullanılır.



D ₁	D ₃	D ₇	L	L ₃	L ₄
8	17.0	18	18.0	13.5	4.5
8	17.0	21	18.0	13.0	5.0
9	18.5	21	22.0	16.0	6.0
10	21.0	22	23.0	17.0	6.0
11	21.0	24	23.0	16.5	6.5
12	23.0	26	24.0	17.5	6.5
13	23.5	26	24.0	17.5	6.5
14	25.0	28	25.0	18.5	6.5
15	25.0	28	25.0	18.5	6.5
16	28.5	32	27.0	19.0	8.0
20	33.5	38	31.0	23.0	8.0
25	37.5	44	33.0	24.0	9.0
30	47.5	50	35.0	25.5	9.5



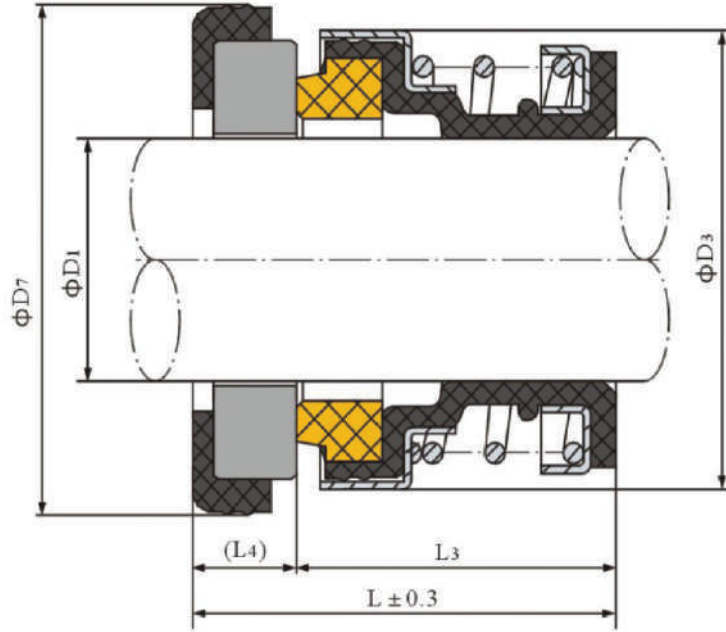
Uygulamalar

Sıcaklık: -20~100 °C

Basınç: ≤0,5MPa

Çevresel hız: ≤5m/s

Temiz su pompaları, sirkülasyon pompalarında kullanılmaktadır.



D ₁	D ₃	D ₇	L	L ₃	L ₄
10	22.5	26	20.5	15.5	5
12	22.5	26	20.5	15.5	5
12	22.5	26	22.5	15.5	7
14	28.0	30	20.5	15.5	5
16	30.0	35	20.5	15.5	5
17	30.0	35	20.5	15.5	5
18	30.0	35	20.5	15.5	5



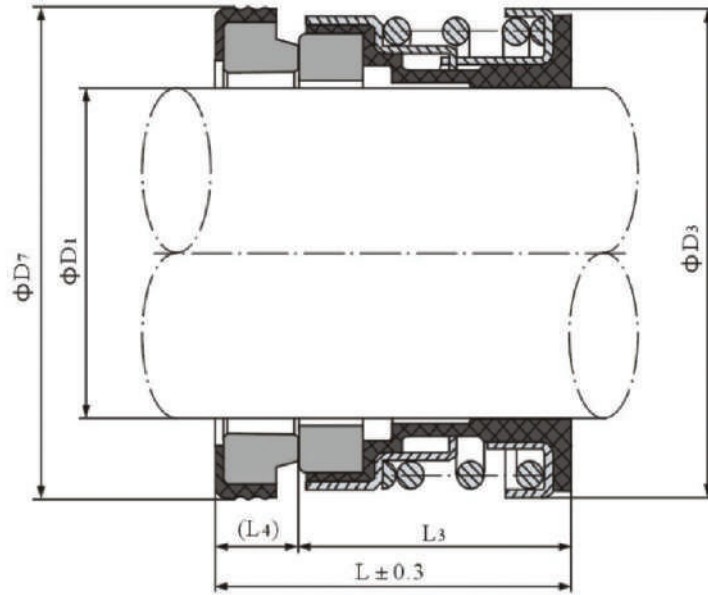
Uygulamalar

Sıcaklık: -20~100°C

Basınç: ≤0,7MPa

Çevresel hız: ≤5m/s

Temiz su pompaları, inline pompalar ve genel endüstriyel pompalarda kullanılmaktadır.



D ₁	D ₃	D ₇	L	L ₃	L ₄
9	20.0	22	20	14.5	5.5
10	20.0	22	20	14.5	5.5
12	22.0	24	20	14.5	5.5
14	24.0	26	25	18.0	7.0
15	26.0	28	25	18.0	7.0
16	26.0	28	25	18.0	7.0
17	31.0	34	25	18.0	7.0
18	31.0	34	25	18.0	7.0
19	33.0	36	25	18.0	7.0
20	33.0	36	25	18.0	7.0
22	36.0	38	25	18.0	7.0
25	39.0	41	37	28.0	9.0
30	43.5	46	37	28.0	9.0
35	50.5	51	37	28.0	9.0
40	56.0	60	40	29.5	10.5
45	63.5	65	40	29.5	10.5



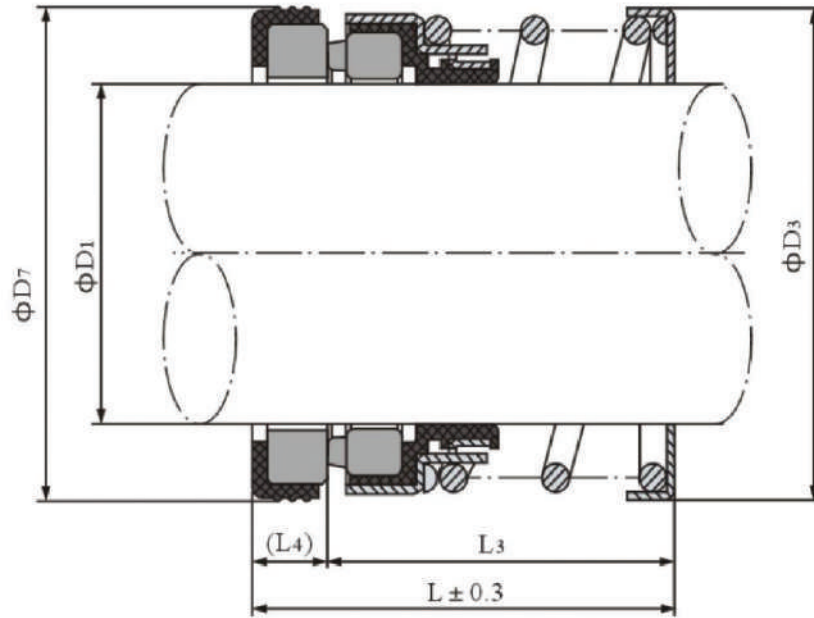
Uygulamalar

Sıcaklık: -20~100°C

Basınç: ≤0,5MPa

Çevresel hız: ≤5m/s

Su pompaları ve karıştırıcılarda kullanılmaktadır.



D ₁	D ₃	D ₇	L	L ₃	L ₄
9	20.0	21	20	15.0	5.0
10	20.0	21	20	15.0	5.0
11	20.0	23	20	15.0	5.0
12	22.0	23	20	15.0	5.0
14	24.5	25	25	20.0	5.0
15	26.5	27	25	20.0	5.0
16	26.5	27	25	20.0	5.0
17	32.0	33	25	20.0	5.0
18	32.0	33	25	20.0	5.0
19	34.0	35	25	20.0	5.0
20	34.0	35	25	20.0	5.0
22	37.0	37	28	22.0	6.0
25	39.0	40	32	24.0	8.0
28	42.0	43	35	27.0	8.0
30	45.0	45	35	27.0	8.0
35	50.5	50	37	29.0	8.0
40	57.5	58	40	31.5	8.5
45	62.5	63	40	31.5	8.5



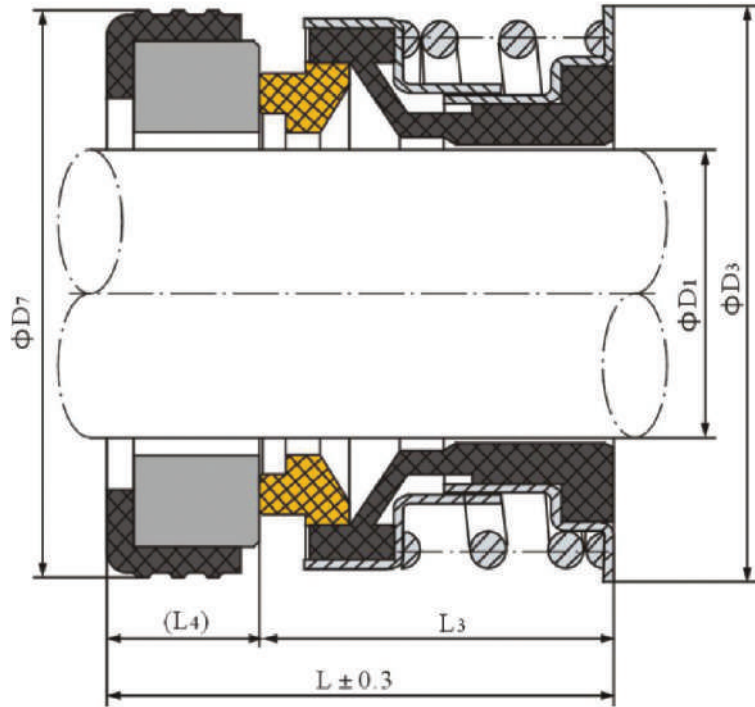
Uygulamalar

Sıcaklık: -20~100°C

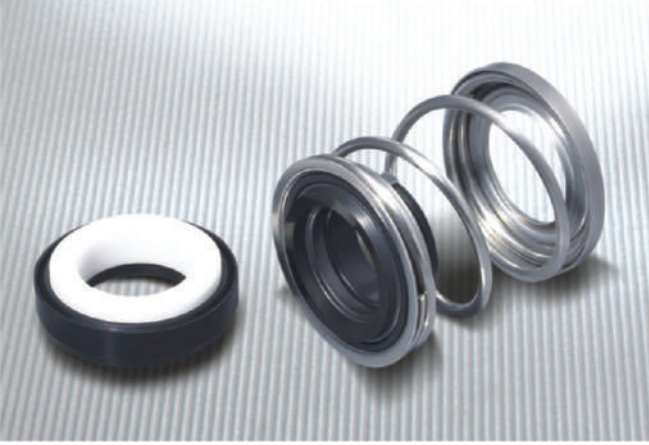
Basınç: ≤0,7 MPa

Çevresel hız: 10m/s

Santrifuj pompalarda, inline pompalarda ve genel endüstriyel pompalarda kullanılmaktadır.



D1	D1	D3	D7	L	L3	L4
-12	12.00	23.3	24	20.8	16.3	4.5
-14	14.00	30.4	30	27.1	18.6	8.5
-5/8"	15.88	30.4	30	27.1	18.6	8.5
-3/4"	19.05	33.0	35	28.0	17.7	10.3



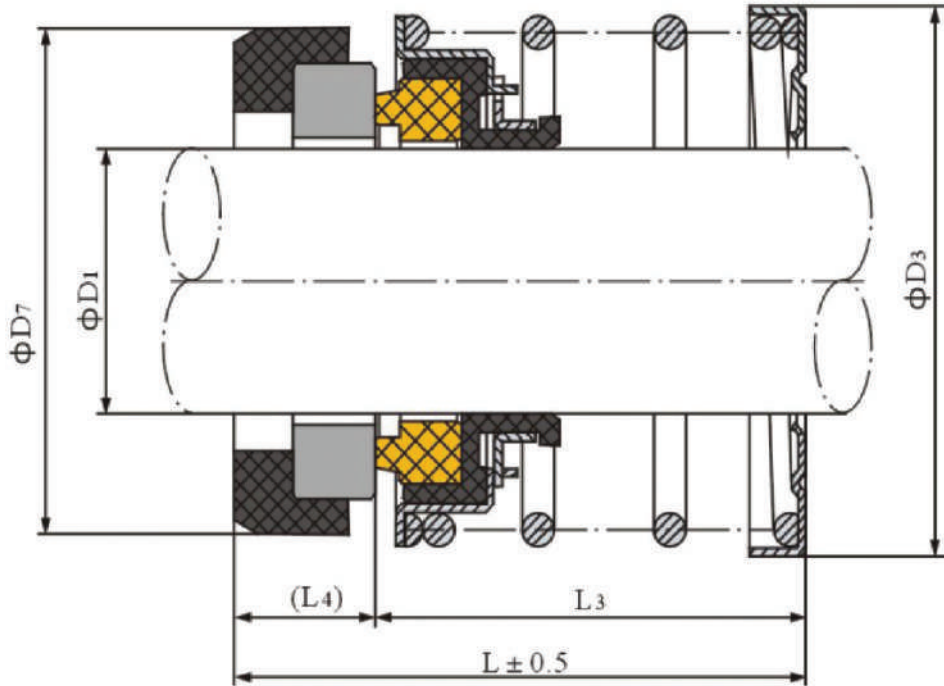
Uygulamalar

Sıcaklık: -20~100 °C

Basınç: ≤0,7 MPa

Çevresel hız: ≤5m/s

Genel endüstriyel pompalar ve dalgıç pompalarda kullanılmaktadır.



D1	D3	D7	L	L3	L4
14	32	29.5	32.0	24.5	7.5
15	32	29.5	32.0	24.5	7.5
16	32	29.5	32.0	24.5	7.5



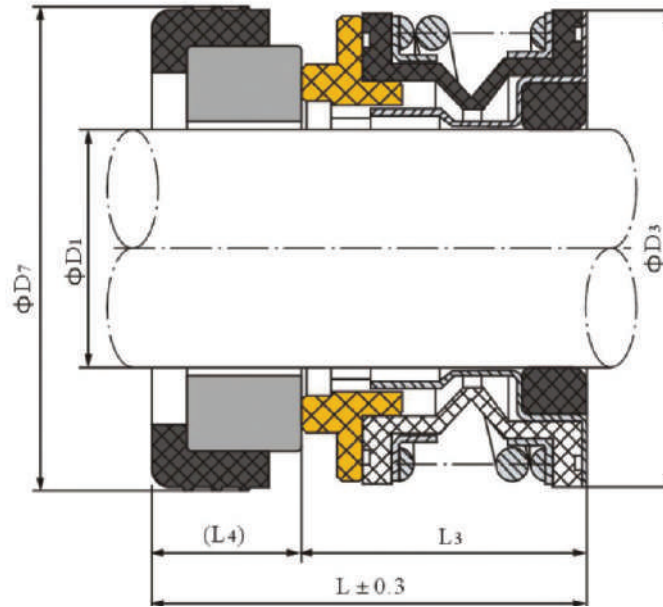
Uygulamalar

Sıcaklık: -20~100 °C

Basınç: ≤0,7 MPa

Çevresel hız: ≤5m/s

Su pompaları ve karıştırıcılarda kullanılmaktadır.



D1	D1	D3	D7	L	L3	L4
3/8"	9.53	24	22.20	23.0	16.7	6.3
1/2"	12.70	27	25.40	26.3	18.3	8.0
5/8"	15.88	31	31.75	28.6	18.3	10.3
5/8"H	15.88	31	31.75	30.1	19.8	10.3
3/4"	19.05	34	34.95	28.6	18.3	10.3
3/4"H	19.05	34	34.95	30.1	19.8	10.3
1"	25.40	43	41.30	31.7	20.7	11.0



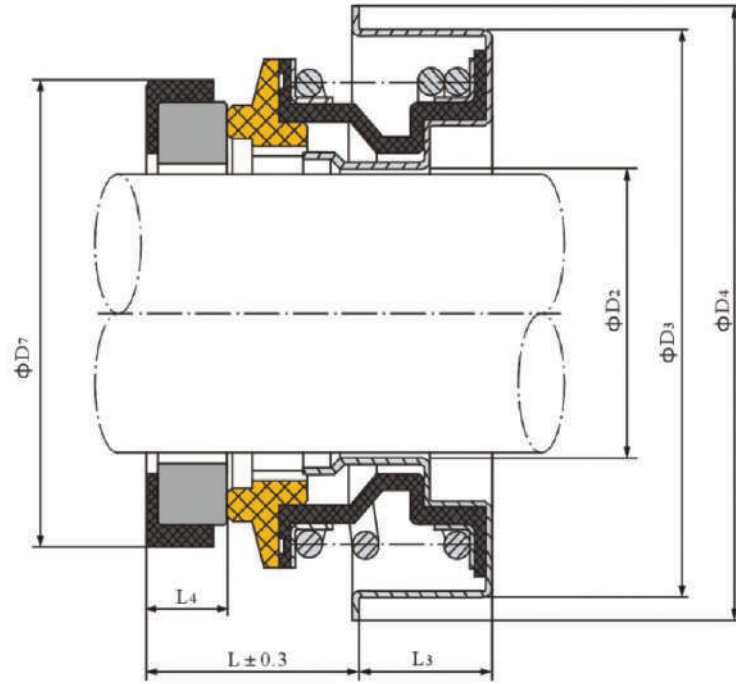
Uygulamalar

Sıcaklık: -20~100°C

Basınç: ≤0,5MPa

Çevresel hız: ≤5m/s

Mini su pompalarında kullanılır.



D ₂	D ₂	D ₃	D ₄	D ₇	L ₁	L ₃	L ₄
1/2"	14.0	28.5	31.7	25.0	10.2	8.0	5.0
1/2"B	14.0	30.0	35.0	25.0	10.2	8.0	5.0
5/8"	18.0	36.5	41.3	31.0	11.8	8.0	5.0
3/4"	21.0	40.0	43.7	35.0	11.0	9.5	5.0
1"	26.4	47.0	51.0	41.3	19.0	12.0	11.0
1 1/8"	31.0	52.0	57.0	48.0	16.0	11.0	8.5



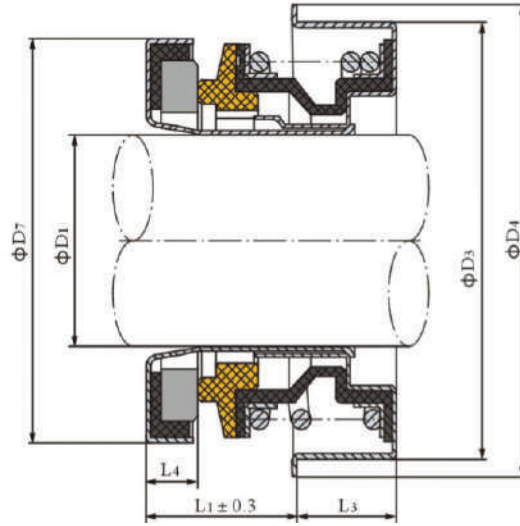
Uygulamalar

Sıcaklık: -20~100°C

Basınç: ≤0,4MPa

Çevresel hız: ≤5m/s

Mini su pompalarında kullanılır.



D ₁	D ₃	D ₄	D ₇	L ₁	L ₃	L ₄
12	30.0	35.0	25.0	9.7	8.0	4.7
13	30.0	35.0	25.0	9.7	8.0	4.7
15	36.5	41.3	28.5	11.5	8.5	5.0
15	30.0	35.0	28.5	11.0	8.0	5.0
16	36.5	41.3	28.5	11.5	8.5	5.0
20	40.0	43.7	36.8	12.5	9.5	5.0
20	52.0	57.0	37.0	16.0	10.0	4.7
16	36.5	41.2	30.0	11.3	9.5	5.0
17	35.0	40.0	29.8	15.0	8.0	5.0
16	38.1	44.0	28.5	11.0	8.0	6.1



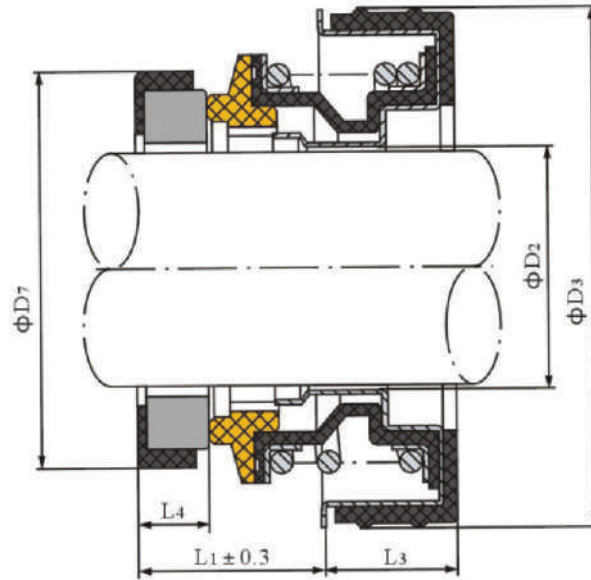
Uygulamalar

Sıcaklık: -20~100 °C

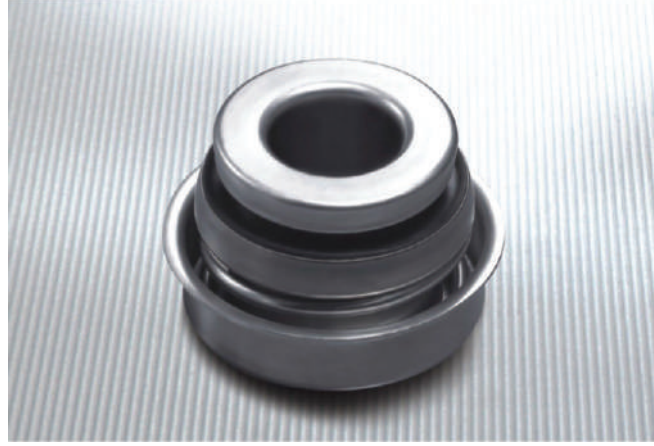
Basınç: ≤0,5MPa

Çevresel hız: 5m/s

Mini su pompalarında kullanılır.



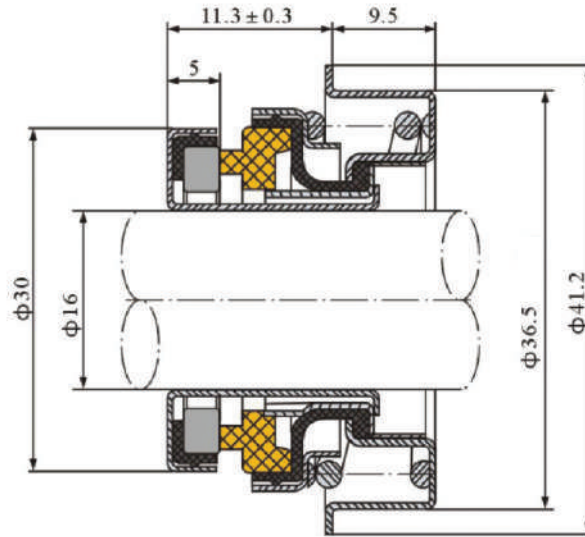
D ₂	D ₃	D ₇	L ₁	L ₃	L ₄
11.0	27.0	23.0	10.5	7.5	4.0
14.0	32.0	25.0	10.2	9.0	5.0
18.0	41.0	31.0	11.8	10.0	5.0
18.0	41.0	35.0	16.5	9.5	9.0
18.5	35.0	30.0	16.0	8.0	6.0
21.0	45.0	35.0	11.0	11.5	5.0
26.4	52.0	41.3	19.0	12.0	11.0
31.0	58.0	48.0	16.5	12.5	8.5

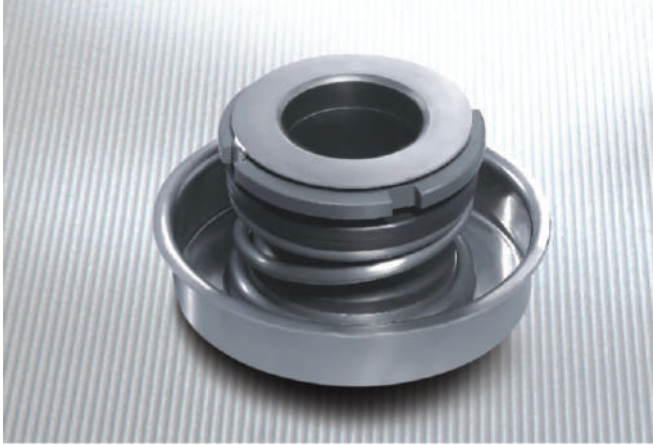


Uygulamalar

Sıcaklık: -20~100 °C
Basınç: ≤0,4MPa
Çevresel hız: 5m/s

Mini su pompalarında kullanılır.





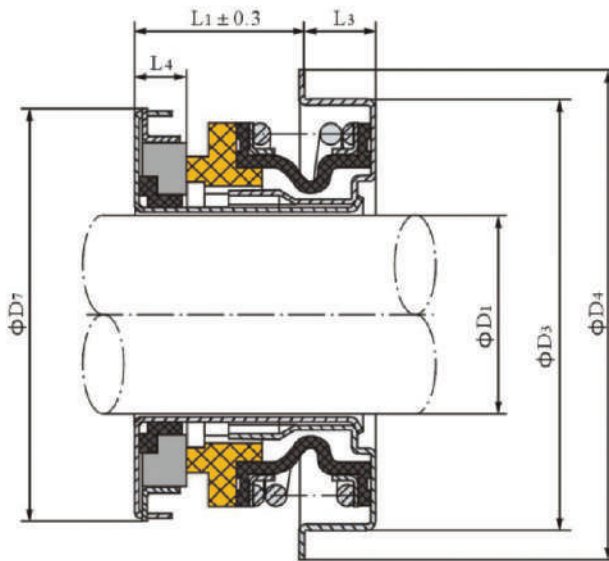
Uygulamalar

Sıcaklık: -20~100 °C

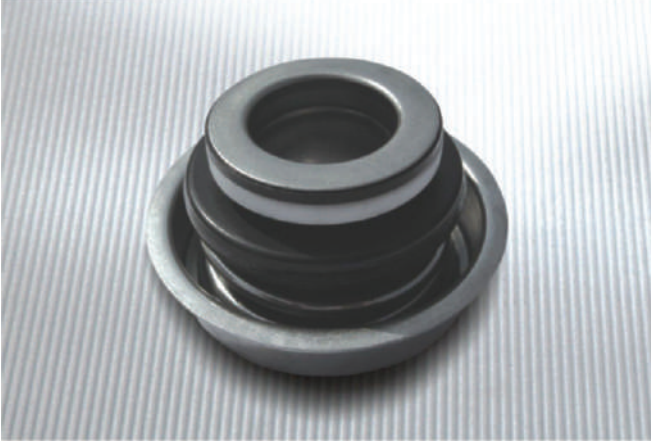
Basınç: ≤0,5MPa

Çevresel hız: 5m/s

Mini su pompalarında kullanılır.



D ₁	D ₃	D ₄	D ₇	L ₁	L ₃	L ₄
12	30.0	35.0	26.8	9.7	8.0	4.5
16	34.2	38.8	33.0	12.4	5.6	4.0
20	52.0	57.2	36.5	13.7	10.5	4.8
20	40.0	46.0	34.5	13.2	11.0	6.0



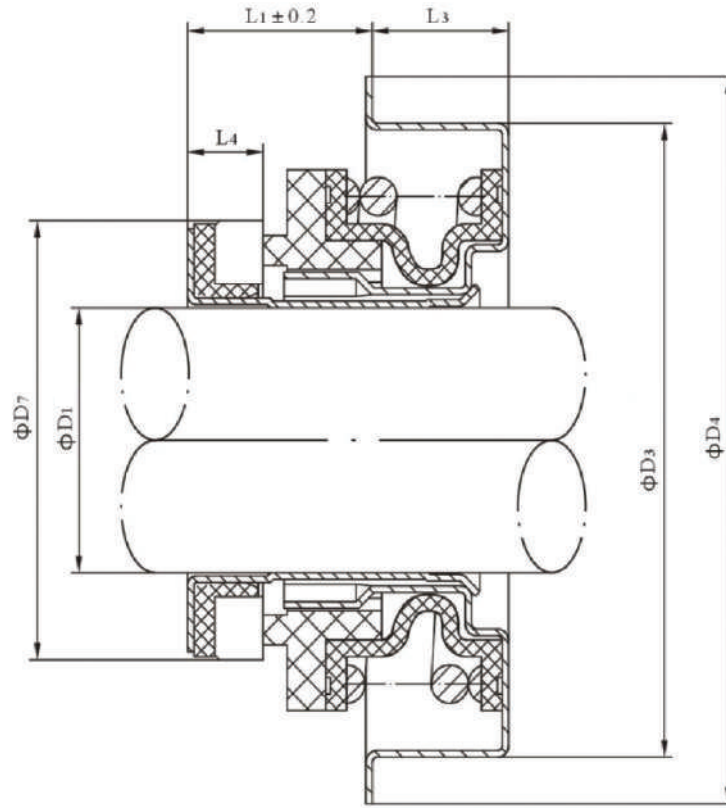
Uygulamalar

Sıcaklık: -20~100 °C

Basınç: ≤0,5MPa

Çevresel hız: 5m/s

Mini su pompalarında kullanılır.



D ₁	D ₃	D ₄	D ₇	L ₁	L ₃	L ₄
12	28.6	35	23.8	9.8	8.7	4.8
12	30	35	23.8	9.8	8.7	4.8
12	33.3	38	23.8	11	7.6	4.8
15	36.5	41.3	26.4	12.5	8.5	4.8
16	36.5	41.3	26.4	12.5	8.5	4.8
16	38.1	43.7	26.4	12.5	8.5	4.8
16	38.6	43.7	26.4	12.5	8.5	4.8
16	39.4	43.7	26.4	12.5	8.5	4.8

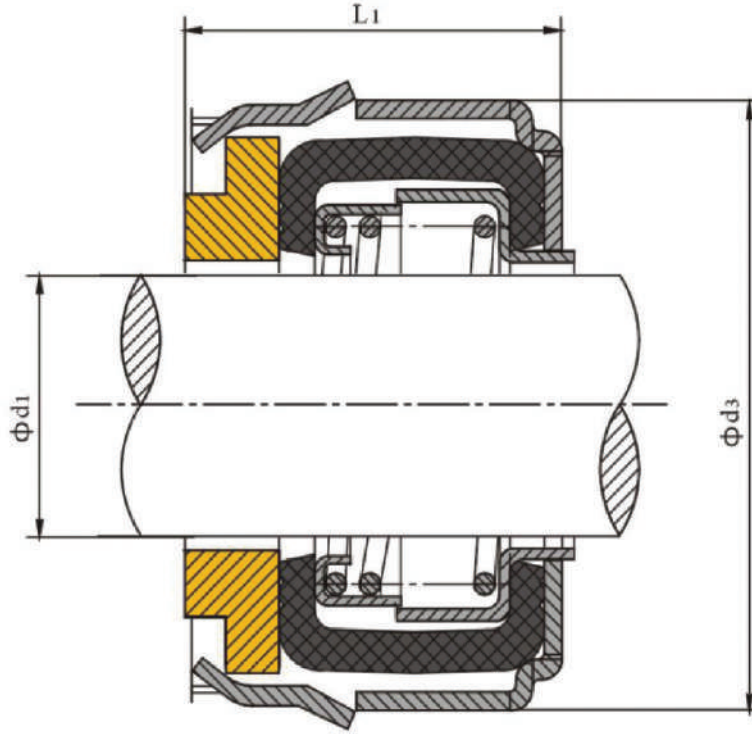


Uygulamalar

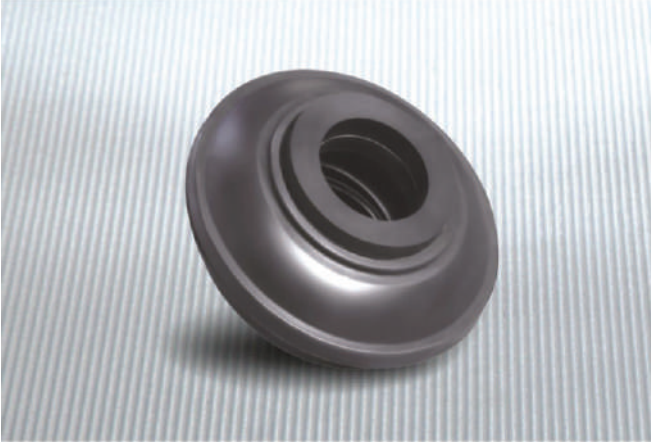
Sıcaklık: -30~200°C
 Basınç: ≤0,6MPa
 Çevresel hız: ≤10m/s

Malzemeler

*Sabit ring: Plastik karbon/Karbon/Silisyum Kar.
 *Sekonder keçe: NBR, EPDM, HNBR
 *Yay: 65Mn/SUS304
 *Diğer parçalar: Bakır/SUS304/A3



D _i	D ₁	D ₃	L ₁
08	16	36.5	16.5
08S	16	33.4	14.5
04	20	43	18
02S	25	51	12.5
02M	25	52	23
02L	25	52.5/52	29



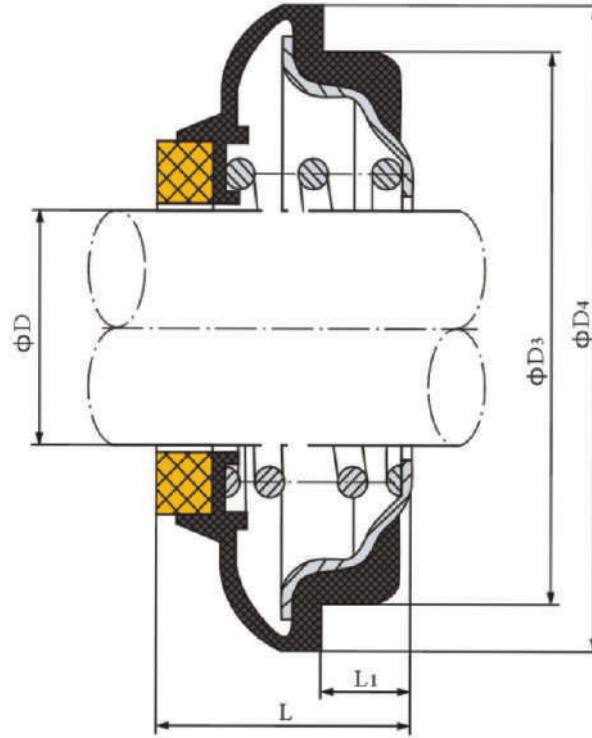
Uygulamalar

Sıcaklık: -20~100 °C

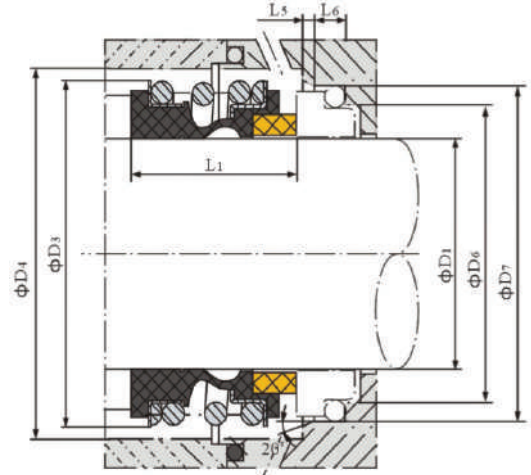
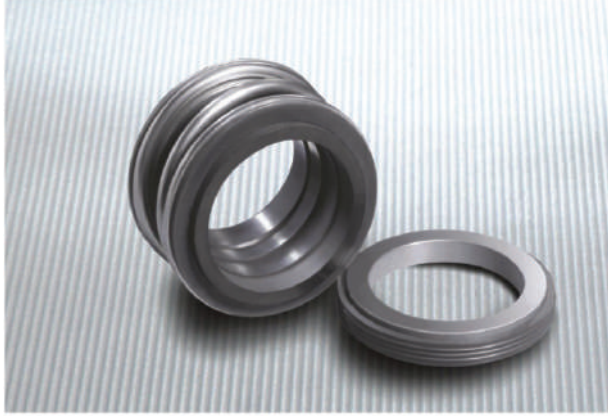
Basınç: ≤0,4MPa

Hız: ≤3m/s

Ortam: Su, deniz suyuna karşı dayanıklı



D	D	D ₃	D ₄	L	L ₁
14A	14	34	40.2	15.5	7.5
16	15	37	44.0	16.0	6.3



Uygulamalar

Sıcaklık:20~200°C
 Basınç:≤1,2 MPa
 Çevresel hız:≤23m/s
 Ortam:Yağ,su ve diğer zayıf korozif akışkanlar

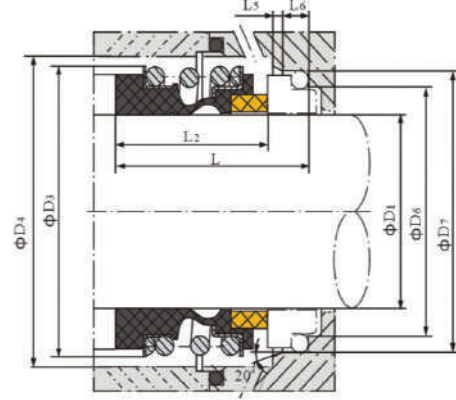
Tasarım Özellikleri

*Büyük yaylı körlüklü tasarım
 *Tekli yapı, daha iyi entegrasyon, kompakt
 konstrüksiyon, sağlam salmastra, uzun çalışma
 süresi.
 *ISO 3069 ve DIN 24960 standartına ve birçok
 spesifikasyona uygun.

Malzemeler

*Sabit ring:Seramik/Silisyum/Tungsten Karbür
 *Döner ring:Karbon/Silisyum Karbür
 *Körük:NBR/EPDM/Viton
 *Oring:NBR/EPDM/Viton

D1	D3	D4	D6	D7	D8	D11	D12	L	L1	L2	L5	L6	L7	L8	L9	L10	L11	L12	L14	L15	L16
12	25.0	26	19	23	3	17.5	21.6	32.5	15.0	25.9	1.5	4	8.5	17.5	10.0	7.5	6.6	6.5	5.6	1.2	3.8
14	28.5	30	21	25	3	20.5	24.6	35.0	17.0	28.4	1.5	4	8.5	17.5	10.0	7.5	6.6	6.5	5.6	1.2	3.8
15	28.5	30	-	-	3	20.5	24.6	-	17.0	28.4	-	-	-	-	-	-	-	7.5	6.6	1.2	3.8
16	28.5	30	23	27	3	22.0	28.0	35.0	17.0	28.4	1.5	4	8.5	17.5	10.0	7.5	6.6	8.5	7.5	1.5	5.0
18	32.0	33	27	33	3	24.0	30.0	37.5	19.5	30.0	2.0	5	9.0	19.5	11.5	8.5	7.5	9.0	8.0	1.5	5.0
19	36.0	38	-	-	3	-	-	-	21.5	30.0	2.0	5	9.0	19.5	11.5	8.5	7.5	-	-	1.5	5.0
20	37.0	38	29	35	3	29.5	35.0	37.5	21.5	30.0	2.0	5	9.0	19.5	11.5	8.5	7.5	8.5	7.5	1.5	5.0
22	37.0	38	31	37	3	29.5	35.0	37.5	21.5	30.0	2.0	5	9.0	19.5	11.5	8.5	7.5	8.5	7.5	1.5	5.0
24	42.5	44	33	39	3	32.0	38.0	40.0	22.5	32.5	2.0	5	9.0	19.5	11.5	8.5	7.5	8.5	7.5	1.5	5.0
25	42.5	44	34	40	3	32.0	38.0	40.0	23.0	32.5	2.0	5	9.0	19.5	11.5	8.5	7.5	8.5	7.5	1.5	5.0
28	49.0	50	37	43	3	36.0	42.0	42.5	26.5	35.0	2.0	5	9.0	19.5	11.5	8.5	7.5	10.0	9.0	1.5	5.0
30	49.0	50	39	45	3	39.2	45.0	42.5	26.5	35.0	2.0	5	9.0	19.5	11.5	8.5	7.5	11.5	10.5	1.5	5.0
32	53.5	55	42	48	3	42.2	48.0	42.5	27.5	35.0	2.0	5	9.0	19.5	11.5	8.5	7.5	11.5	10.5	1.5	5.0
33	53.5	55	42	48	3	44.2	50.0	42.5	27.5	35.0	2.0	5	9.0	19.5	11.5	8.5	7.5	12.0	11.0	1.5	5.0
35	57.0	59	44	50	3	46.2	52.0	42.5	28.5	35.0	2.0	5	9.0	19.5	11.5	8.5	7.5	12.0	11.0	1.5	5.0
38	59.0	61	49	56	4	49.2	55.0	45.0	30.0	36.0	2.0	6	9.0	22.0	14.0	10.0	9.0	11.3	10.3	1.5	5.0
40	62.0	64	51	58	4	52.2	58.0	45.0	30.0	36.0	2.0	6	9.0	22.0	14.0	10.0	9.0	11.8	10.8	1.5	5.0
43	65.5	67	54	61	4	53.3	62.0	45.0	30.0	36.0	2.0	6	9.0	22.0	14.0	10.0	9.0	13.2	12.0	2.0	6.0
45	68.0	70	56	63	4	55.3	64.0	45.0	30.0	36.0	2.0	6	9.0	22.0	14.0	10.0	9.0	12.8	11.6	2.0	6.0
48	70.5	74	59	66	4	59.7	68.4	45.0	30.5	36.0	2.0	6	9.0	22.0	14.0	10.0	9.0	12.8	11.6	2.0	6.0
50	74.0	77	62	70	4	60.8	69.3	47.5	30.5	38.0	2.5	6	9.0	23.0	15.0	10.5	9.5	12.8	11.6	2.0	6.0
53	78.5	81	65	73	4	63.8	72.3	47.5	33.0	36.5	2.5	6	9.0	23.0	15.0	12.0	11.0	13.5	12.3	2.0	6.0
55	81.0	83	67	75	4	66.5	75.4	47.5	35.0	36.5	2.5	6	9.0	23.0	15.0	12.0	11.0	14.5	13.3	2.0	6.0
58	85.5	88	70	78	4	69.5	78.4	52.5	37.0	41.5	2.5	6	9.0	23.0	15.0	12.0	11.0	14.5	13.3	2.0	6.0
60	88.5	91	72	80	4	71.5	80.4	52.5	38.0	41.5	2.5	6	9.0	23.0	15.0	12.0	11.0	14.5	13.3	2.0	6.0
65	93.5	96	77	85	4	76.5	85.4	52.5	40.0	41.5	2.5	6	9.0	23.0	15.0	12.0	11.0	14.2	13.0	2.0	6.0
68	96.5	100	81	90	4	82.7	91.5	52.5	40.0	41.2	2.5	7	9.0	26.0	18.0	12.5	11.3	14.9	13.7	2.0	6.0
70	99.5	103	83	92	4	83.0	92.0	60.0	40.0	48.7	2.5	7	9.0	26.0	18.0	12.5	11.3	14.2	13.0	2.0	6.0
75	107.0	110	88	97	4	90.2	99.0	60.0	40.0	48.7	2.5	7	9.0	26.0	18.0	12.5	11.3	15.2	14.0	2.0	6.0
80	112.0	116	95	105	4	95.2	104.0	60.0	40.0	48.0	3.0	7	9.0	26.2	18.2	13.0	12.0	16.2	15.0	2.0	6.0
85	120.0	124	100	110	4	100.2	109.0	60.0	41.0	46.0	3.0	7	9.0	26.2	18.2	15.0	14.0	16.0	14.8	2.0	6.0
90	127.0	131	105	115	4	105.2	114.0	65.0	45.0	51.0	3.0	7	9.0	26.2	18.2	15.0	14.0	16.0	14.8	2.0	6.0
95	132.0	136	110	120	4	111.6	120.3	65.0	46.0	51.0	3.0	7	9.0	25.2	17.2	15.0	14.0	17.0	15.8	2.0	6.0
100	137.0	140	115	125	4	114.5	123.3	65.0	47.0	51.0	3.0	7	9.0	25.2	17.2	15.0	14.0	17.0	15.8	2.0	6.0



Uygulamalar

Sıcaklık:20~200°C
 Basınç:≤1,2 MPa
 Çevresel hız:≤23m/s
 Ortam:Yağ,su ve diğer zayıf korozif akışkanlar

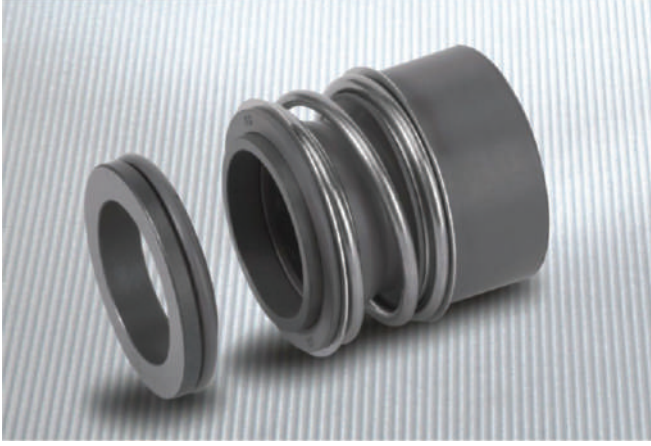
Tasarım Özellikleri

*Büyük yaylı kövrüklü tasarım
 *Tekli yapı, daha iyi entegrasyon, kompakt konstrüksiyon, sağlam salmastra, uzun çalışma süresi.
 *ISO 3069 ve DIN 24960 standartına ve birçok spesifikasyona uygun.

Malzemeler

*Sabit ring:Seramik/Silisyum/Tungsten Karbür
 *Döner ring:Karbon/Silisyum Karbür
 *Kövrük:NBR/EPDM/Viton
 *Oring:NBR/EPDM/Viton

D1	D3	D4	D6	D7	D8	D11	D12	L	L1	L2	L5	L6	L7	L8	L9	L10	L11	L12	L14	L15	L16
12	25.0	26	19	23	3	17.5	21.6	32.5	15.0	25.9	1.5	4	8.5	17.5	10.0	7.5	6.6	6.5	5.6	1.2	3.8
14	28.5	30	21	25	3	20.5	24.6	35.0	17.0	28.4	1.5	4	8.5	17.5	10.0	7.5	6.6	6.5	5.6	1.2	3.8
15	28.5	30	-	-	3	20.5	24.6	-	17.0	28.4	-	-	-	-	-	-	-	7.5	6.6	1.2	3.8
16	28.5	30	23	27	3	22.0	28.0	35.0	17.0	28.4	1.5	4	8.5	17.5	10.0	7.5	6.6	8.5	7.5	1.5	5.0
18	32.0	33	27	33	3	24.0	30.0	37.5	19.5	30.0	2.0	5	9.0	19.5	11.5	8.5	7.5	9.0	8.0	1.5	5.0
19	36.0	38	-	-	3	-	-	-	21.5	30.0	2.0	5	9.0	19.5	11.5	8.5	7.5	-	-	1.5	5.0
20	37.0	38	29	35	3	29.5	35.0	37.5	21.5	30.0	2.0	5	9.0	19.5	11.5	8.5	7.5	8.5	7.5	1.5	5.0
22	37.0	38	31	37	3	29.5	35.0	37.5	21.5	30.0	2.0	5	9.0	19.5	11.5	8.5	7.5	8.5	7.5	1.5	5.0
24	42.5	44	33	39	3	32.0	38.0	40.0	22.5	32.5	2.0	5	9.0	19.5	11.5	8.5	7.5	8.5	7.5	1.5	5.0
25	42.5	44	34	40	3	32.0	38.0	40.0	23.0	32.5	2.0	5	9.0	19.5	11.5	8.5	7.5	8.5	7.5	1.5	5.0
28	49.0	50	37	43	3	36.0	42.0	42.5	26.5	35.0	2.0	5	9.0	19.5	11.5	8.5	7.5	10.0	9.0	1.5	5.0
30	49.0	50	39	45	3	39.2	45.0	42.5	26.5	35.0	2.0	5	9.0	19.5	11.5	8.5	7.5	11.5	10.5	1.5	5.0
32	53.5	55	42	48	3	42.2	48.0	42.5	27.5	35.0	2.0	5	9.0	19.5	11.5	8.5	7.5	11.5	10.5	1.5	5.0
33	53.5	55	42	48	3	44.2	50.0	42.5	27.5	35.0	2.0	5	9.0	19.5	11.5	8.5	7.5	12.0	11.0	1.5	5.0
35	57.0	59	44	50	3	46.2	52.0	42.5	28.5	35.0	2.0	5	9.0	19.5	11.5	8.5	7.5	12.0	11.0	1.5	5.0
38	59.0	61	49	56	4	49.2	55.0	45.0	30.0	36.0	2.0	6	9.0	22.0	14.0	10.0	9.0	11.3	10.3	1.5	5.0
40	62.0	64	51	58	4	52.2	58.0	45.0	30.0	36.0	2.0	6	9.0	22.0	14.0	10.0	9.0	11.8	10.8	1.5	5.0
43	65.5	67	54	61	4	53.3	62.0	45.0	30.0	36.0	2.0	6	9.0	22.0	14.0	10.0	9.0	13.2	12.0	2.0	6.0
45	68.0	70	56	63	4	55.3	64.0	45.0	30.0	36.0	2.0	6	9.0	22.0	14.0	10.0	9.0	12.8	11.6	2.0	6.0
48	70.5	74	59	66	4	59.7	68.4	45.0	30.5	36.0	2.0	6	9.0	22.0	14.0	10.0	9.0	12.8	11.6	2.0	6.0
50	74.0	77	62	70	4	60.8	69.3	47.5	30.5	38.0	2.5	6	9.0	23.0	15.0	10.5	9.5	12.8	11.6	2.0	6.0
53	78.5	81	65	73	4	63.8	72.3	47.5	33.0	36.5	2.5	6	9.0	23.0	15.0	12.0	11.0	13.5	12.3	2.0	6.0
55	81.0	83	67	75	4	66.5	75.4	47.5	35.0	36.5	2.5	6	9.0	23.0	15.0	12.0	11.0	14.5	13.3	2.0	6.0
58	85.5	88	70	78	4	69.5	78.4	52.5	37.0	41.5	2.5	6	9.0	23.0	15.0	12.0	11.0	14.5	13.3	2.0	6.0
60	88.5	91	72	80	4	71.5	80.4	52.5	38.0	41.5	2.5	6	9.0	23.0	15.0	12.0	11.0	14.5	13.3	2.0	6.0
65	93.5	96	77	85	4	76.5	85.4	52.5	40.0	41.5	2.5	6	9.0	23.0	15.0	12.0	11.0	14.2	13.0	2.0	6.0
68	96.5	100	81	90	4	82.7	91.5	52.5	40.0	41.2	2.5	7	9.0	26.0	18.0	12.5	11.3	14.9	13.7	2.0	6.0
70	99.5	103	83	92	4	83.0	92.0	60.0	40.0	48.7	2.5	7	9.0	26.0	18.0	12.5	11.3	14.2	13.0	2.0	6.0
75	107.0	110	88	97	4	90.2	99.0	60.0	40.0	48.7	2.5	7	9.0	26.0	18.0	12.5	11.3	15.2	14.0	2.0	6.0
80	112.0	116	95	105	4	95.2	104.0	60.0	40.0	48.0	3.0	7	9.0	26.2	18.2	13.0	12.0	16.2	15.0	2.0	6.0
85	120.0	124	100	110	4	100.2	109.0	60.0	41.0	46.0	3.0	7	9.0	26.2	18.2	15.0	14.0	16.0	14.8	2.0	6.0
90	127.0	131	105	115	4	105.2	114.0	65.0	45.0	51.0	3.0	7	9.0	26.2	18.2	15.0	14.0	16.0	14.8	2.0	6.0
95	132.0	136	110	120	4	111.6	120.3	65.0	46.0	51.0	3.0	7	9.0	25.2	17.2	15.0	14.0	17.0	15.8	2.0	6.0
100	137.0	140	115	125	4	114.5	123.3	65.0	47.0	51.0	3.0	7	9.0	25.2	17.2	15.0	14.0	17.0	15.8	2.0	6.0

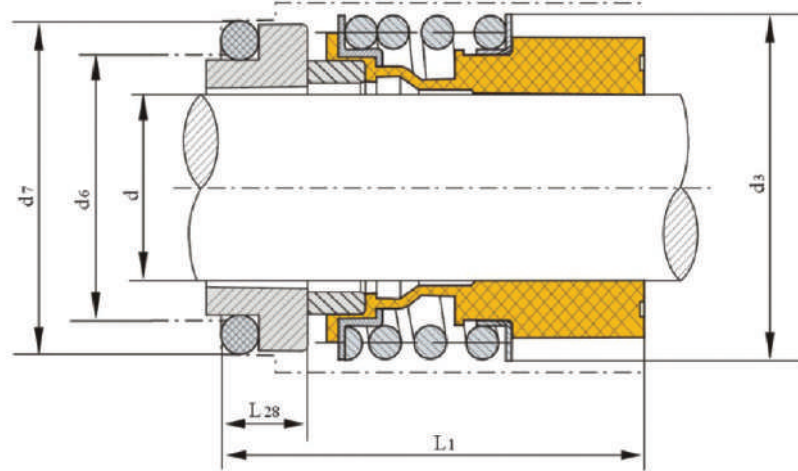


Uygulamalar

Sıcaklık: -20~120°C
 Basınç: ≤1,2 MPa
 Çevresel hız: ≤10m/s

Malzemeler

*Sabit ring: Seramik/Silisyum/Tungsten Karbür
 *Döner ring: Karbon/Silisyum Karbür
 *Körük: NBR/EPDM/Viton
 *Oring: NBR/EPDM/Viton



d(mm)	d ₃	d ₆	d ₇	L ₁	L ₂₈
24	42.5	33	39	50	7.5
25	42.5	34	40	50	7.5
28	49.0	37	43	50	7.5
30	49.0	39	45	50	7.5
32	53.5	42	48	55	7.5
35	57.0	44	50	55	7.5
38	59.0	49	56	55	9
40	62.0	51	58	55	9



Uygulamalar

Sıcaklık: -40~150°C

Basınç: ≤4 MPa

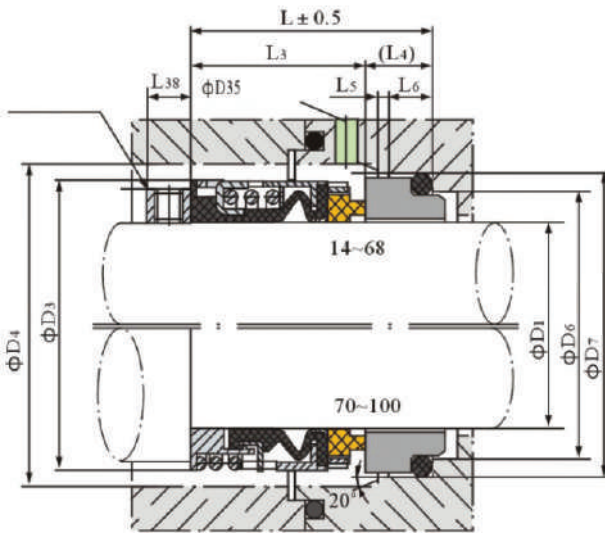
Çevresel hız: ≤13m/s

Uygulamalar: Farklı tipte pompalar, kompresörler oto-soğutma makinesi, mikserler, ve yağ, su ve diğer zayıf korozif solüsyonlar için tüm döner ekipmanlarda kullanılır.

Tasarım Özellikleri

*Tekli yapı, daha iyi entegrasyon, kompakt konstrüksiyon, sağlam salmastra, uzun çalışma ömrü

*GB6556, ISO3069 ve DIN 24960'a ve birçok spesifikasyonlara uygun.



D1	D3	D4	D6	D7	D35	L	L3	L4	L5	L6	L8	L38
14	24	26	21	25	6.5	35.0	23.0	12.0	1.5	4	12.5	5.0
16	26	28	23	27	6.5	35.0	23.0	12.0	1.5	4	12.5	5.0
18	32	34	27	33	6.5	37.5	24.0	13.5	2.0	5	14.5	7.5
20	34	36	29	35	6.5	37.5	24.0	13.5	2.0	5	14.5	7.5
22	36	38	31	37	6.5	37.5	24.0	13.5	2.0	5	14.5	7.5
24	38	40	33	39	6.5	40.0	26.7	13.5	2.0	5	14.5	7.5
25	39	41	34	40	6.5	40.0	27.0	13.0	2.0	5	14.0	7.5
28	42	44	37	43	6.5	42.5	30.0	12.5	2.0	5	13.5	7.5
30	44	46	39	45	6.5	42.5	30.5	12.0	2.0	5	13.0	7.5
32	46	48	42	48	6.5	42.5	30.5	12.0	2.0	5	13.0	8.0
33	47	49	42	48	6.5	42.5	30.5	12.0	2.0	5	13.0	8.0
35	49	51	44	50	6.5	42.5	30.5	12.0	2.0	5	13.0	8.0
38	54	58	49	56	6.5	45.0	32.0	13.0	2.0	6	14.0	10.0
40	56	60	51	58	6.5	45.0	32.0	13.0	2.0	6	14.0	10.0
43	59	63	54	61	6.5	45.0	32.0	13.0	2.0	6	14.0	12.0
45	61	65	56	63	6.5	45.0	32.0	13.0	2.0	6	14.0	12.0
48	64	68	59	66	6.5	45.0	32.0	13.0	2.0	6	14.0	12.0
50	66	70	62	70	6.5	47.5	34.0	13.5	2.5	6	14.5	12.0
53	69	73	65	73	6.5	47.5	34.0	13.5	2.5	6	14.5	12.0
55	71	75	67	75	6.5	47.5	34.0	13.5	2.5	6	14.5	12.0
58	78	83	70	78	6.5	52.5	39.0	13.5	2.5	6	14.5	14.0
60	80	85	72	80	6.5	52.5	39.0	13.5	2.5	6	14.5	14.0
63	83	88	75	83	6.5	52.5	39.0	13.5	2.5	6	14.5	14.0
65	85	90	77	85	6.5	52.5	39.0	13.5	2.5	6	14.2	14.0
68	88	93	81	90	6.5	52.5	39.0	13.5	2.5	7	14.2	14.0
70	89	95	83	92	6.5	60.0	45.5	14.5	2.5	7	15.2	14.0
75	96	104	88	97	6.5	60.0	45.5	14.5	2.5	7	15.2	14.0
80	104	109	95	105	6.5	60.0	45.0	15.0	3.0	7	15.7	14.0



Uygulamalar

Sıcaklık: -30~120° C

Basınç: ≤1,2 MPa

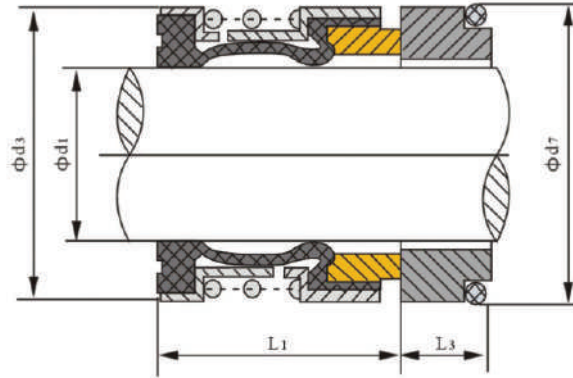
Çevresel hız: 10m/s

Malzemeler

*Sabit ring: Seramik/Silisyum/Tungsten Karbür

*Döner ring: Karbon/Silisyum/Tungsten Karbür

*Sekonder keçe: NBR/EPDM/Viton



d1	d3	d7	L1	L3
16	26	27	15	12
18	32	33	20	13.5
20	34	35	20	13.5
22	36	37	20	13.5
24	38	39	20	13.3
25	39	40	20	13
28	42	43	26	12.5
30	44	45	26	12
32	46	48	26	12
33	47	48	26	12
35	49	50	26	12
38	54	56	30	13
40	56	58	30	13
43	59	61	30	13
45	61	63	30	13
48	64	66	30	13
50	66	70	30	13.5
53	69	73	30	13.5
55	71	75	30	13.5
60	80	80	33	13.5
65	85	85	33	13.5
70	90	92	33	14.5
75	99	97	40	14.5



Uygulamalar

Sıcaklık: -40~150° C
 Basınç: ≤1,4 MPa
 Çevresel hız: 13m/s

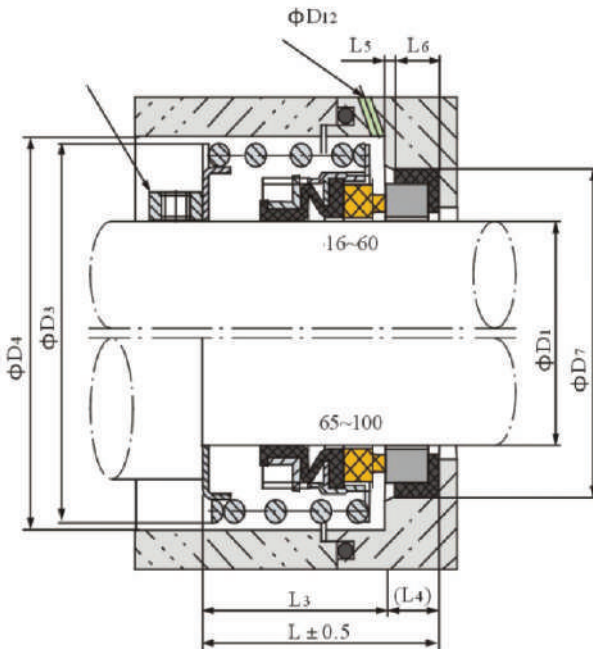
Uygulamalar: Farklı tip pompalarda, mikserlerde, ve yağ, su ve diğer zayıf korozif solüsyonlar için kullanılan döner ekipmanlarda kullanılır.

Tasarım Özellikleri

*Tekli yapı, daha iyi entegrasyon, kompakt konstrüksiyon

*Sağlam kauçuk, körüklü tasarım

*Körük ve contalar yıpranmaya ve yağa karşı dayanıklı NBR ve ısıya ve aşındırıcılara karşı dayanıklı, iyi kaliteli viton malzemeli olarak imal edilmektedir.



D1	D3	D4	D7	D12	L	L3	L4	L5	L6
16	34.0	37	30	5	33	25	8	1.5	6
18	36.8	40	32	5	33	25	8	2.0	6
20	38.8	42	34	5	33	25	8	2.0	6
22	41.5	45	36	5	33	25	8	2.0	6
25	44.8	48	39	5	34	26	8	2.0	6
28	48.5	52	43	5	34	26	8	2.0	6
30	52.0	55	48	5	34	26	8	2.0	7
35	57.0	60	53	5	40	30	10	2.0	8
40	67.0	70	58	5	44	34	10	2.0	8
45	73.0	76	63	5	46	36	10	2.0	8
50	79.0	81	68	8	51	41	10	2.5	8
55	84.0	87	73	8	53	41	12	2.5	10
60	90.0	95	79	8	53	41	12	2.5	10
65	98.5	104	86	8	61	49	12	2.5	10
70	103.5	109	91	8	64	52	12	2.5	10
75	110.5	116	96	8	64	52	12	2.5	10
80	120.0	125	105	11	70	56	14	3.0	12
85	125.0	130	110	11	70	56	14	3.0	12
90	132.0	137	115	11	70	56	14	3.0	12
95	137.0	142	120	11	70	56	14	3.0	12
100	144.0	149	125	11	76	62	14	3.0	12

D1	D3	D4	D7	D12	L	L3	L4	L5	L6	
3/8"	9.52	28.0	32	24.60	5	33.7	25	8.7	1.5	6
1/2"	12.70	32.0	35	27.80	5	33.7	25	8.7	1.5	6
5/8"	15.87	34.0	39	30.95	5	35.3	25	10.3	1.5	6
3/4"	19.05	38.8	43	34.15	5	35.3	25	10.3	2.0	7
7/8"	22.22	41.5	46	37.30	5	35.3	25	10.3	2.0	7
1"	25.40	44.8	50	40.50	5	35.3	25	10.3	2.0	7
1 1/8"	28.57	48.5	59	47.65	5	44.9	33	11.9	2.0	7
1 1/4"	31.75	57.0	62	50.80	5	44.9	33	11.9	2.0	7
1 3/8"	34.92	57.0	66	54.00	5	44.9	33	11.9	2.0	7
1 1/2"	38.10	67.0	70	57.15	5	44.9	33	11.9	2.0	7
1 5/8"	41.27	67.0	74	60.35	5	44.9	33	11.9	2.0	7
1 3/4"	44.45	73.0	77	63.50	5	52.9	41	11.9	2.0	7
1 7/8"	47.62	73.0	81	66.70	5	52.9	41	11.9	2.0	7
2"	50.80	79.0	85	69.85	8	54.5	41	13.5	2.5	10
2 1/8"	53.97	84.0	88	73.05	8	54.5	41	13.5	2.5	10
2 1/4"	57.15	84.0	91	76.20	8	54.5	41	13.5	2.5	10
2 3/8"	60.32	90.0	94	79.40	8	54.5	41	13.5	2.5	10
2 1/2"	63.50	94.0	97	82.55	8	54.5	41	13.5	2.5	10



Uygulamalar

Sıcaklık: -20~150°C

Basınç: ≤1MPa

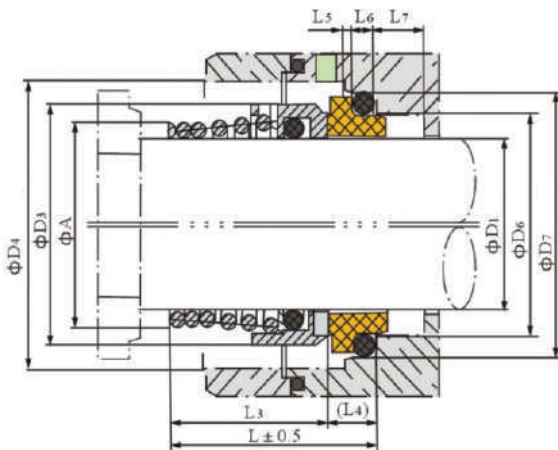
Çevresel hız: ≤13m/s

Uygulamalar: Temiz su pompaları, atıksu pompaları, dalgıç pompalar ve kimyasal pomplarda kullanılır.

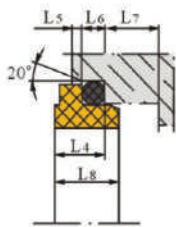
Tasarım Özellikleri

*Tekli yüzey, balansız yapı, konik yaylı.

*Basit tasarım, iyi performans, sağlam salmastra



D45



D45



D1	D3	D4	D6	D7	L	L3	L4	L5	L6	L7	L8	A
12	19.7	24	16.5	20.6	23.5	18	5.5	1.2	2.8	6.2	7.0	15.5
14	22.6	27	19.0	23.1	28.0	22	6.0	1.2	2.8	6.7	8.0	18.0
15	23.8	31	21.0	26.9	29.0	22	7.0	1.3	3.7	7.6	8.0	19.0
16	25.5	31	21.0	26.9	30.0	23	7.0	1.3	3.7	7.6	8.0	20.0
17	26.5	31	21.0	26.9	30.0	23	7.0	1.3	3.7	7.6	8.0	21.0
18	28.5	36	25.0	30.9	32.0	24	8.0	1.3	3.7	8.5	9.3	22.5
19	29.5	36	25.0	30.9	33.0	25	8.0	1.3	3.7	8.5	9.3	23.5
20	29.5	36	25.0	30.9	33.0	25	8.0	1.3	3.7	8.5	9.3	25.0
22	34.0	41	30.0	35.4	33.0	25	8.0	1.8	3.7	8.5	9.3	27.0
24	34.5	41	30.0	35.4	35.0	27	8.0	1.8	3.7	8.5	9.3	30.0
25	37.0	45	33.0	38.2	35.5	27	8.5	1.8	3.7	9.1	10.0	31.0
26	37.5	45	33.0	38.2	35.5	27	8.5	1.8	3.7	9.1	10.0	32.0
28	41.5	50	38.0	43.3	38.0	29	9.0	1.8	3.7	9.6	11.0	34.5
30	44.6	50	38.0	43.3	39.0	30	9.0	1.8	3.7	9.6	11.0	37.0
32	44.6	50	38.0	43.3	39.0	30	9.0	1.8	3.7	9.6	11.0	39.0
35	49.5	60	45.0	53.5	50.5	39	11.5	2.1	5.4	12.0	14.3	43.0
38	54.0	68	52.0	60.5	50.5	39	11.5	2.1	5.4	12.0	14.3	46.0
40	56.0	68	52.0	60.5	50.5	39	11.5	2.1	5.4	12.0	14.3	48.0
42	58.5	68	52.0	60.5	50.5	39	11.5	2.1	5.4	12.0	14.3	50.0
45	63.5	72	57.0	65.5	52.5	41	11.5	2.1	5.4	13.0	15.2	53.5
48	65.5	72	57.0	65.5	52.5	41	11.5	2.1	5.4	13.0	15.2	57.0
50	68.0	80	64.0	72.5	56.5	45	11.5	2.1	5.4	13.0	15.2	59.0
55	73.5	80	64.0	72.5	58.5	47	11.5	2.1	5.4	13.0	15.2	65.0
60	79.0	87	72.0	79.3	60.5	49	11.5	2.1	5.4	13.5	18.2	71.0
65	86.0	92	77.0	84.5	62.5	51	11.5	2.1	5.4	13.5	18.2	76.0



Uygulamalar

Sıcaklık: -20~150°C

Basınç: ≤1MPa

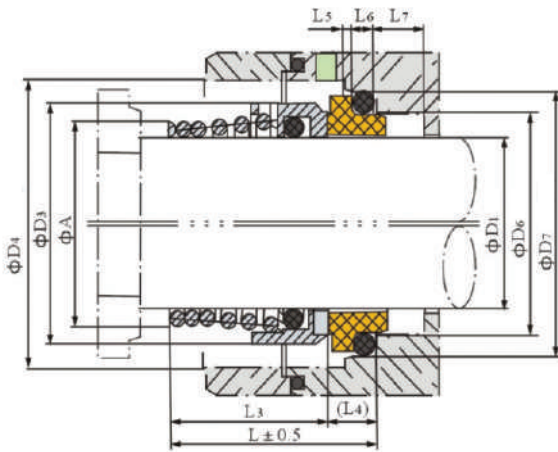
Çevresel hız: ≤13m/s

Uygulamalar: Temiz su pompaları, atıksu pompaları, dalgıç pompalar ve kimyasal pomplarda kullanılır.

Tasarım Özellikleri

*Tekli yüzey, balansız yapı, konik yaylı.

*Basit tasarım, iyi performans, sağlam salmastra



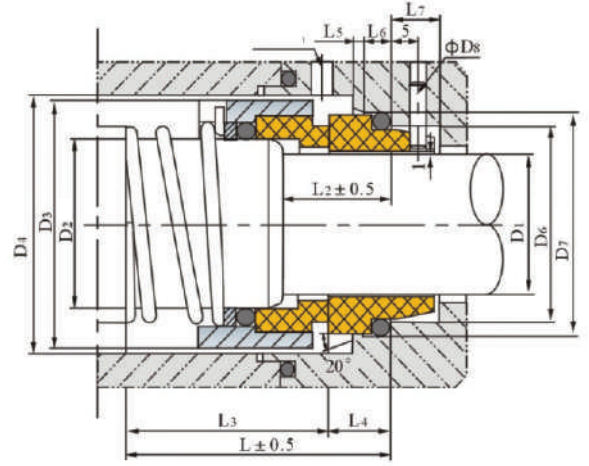
D45



D45



D1	D3	D4	D6	D7	L	L3	L4	L5	L6	L7	L8	A
12	19.7	24	16.5	20.6	23.5	18	5.5	1.2	2.8	6.2	7.0	15.5
14	22.6	27	19.0	23.1	28.0	22	6.0	1.2	2.8	6.7	8.0	18.0
15	23.8	31	21.0	26.9	29.0	22	7.0	1.3	3.7	7.6	8.0	19.0
16	25.5	31	21.0	26.9	30.0	23	7.0	1.3	3.7	7.6	8.0	20.0
17	26.5	31	21.0	26.9	30.0	23	7.0	1.3	3.7	7.6	8.0	21.0
18	28.5	36	25.0	30.9	32.0	24	8.0	1.3	3.7	8.5	9.3	22.5
19	29.5	36	25.0	30.9	33.0	25	8.0	1.3	3.7	8.5	9.3	23.5
20	29.5	36	25.0	30.9	33.0	25	8.0	1.3	3.7	8.5	9.3	25.0
22	34.0	41	30.0	35.4	33.0	25	8.0	1.8	3.7	8.5	9.3	27.0
24	34.5	41	30.0	35.4	35.0	27	8.0	1.8	3.7	8.5	9.3	30.0
25	37.0	45	33.0	38.2	35.5	27	8.5	1.8	3.7	9.1	10.0	31.0
26	37.5	45	33.0	38.2	35.5	27	8.5	1.8	3.7	9.1	10.0	32.0
28	41.5	50	38.0	43.3	38.0	29	9.0	1.8	3.7	9.6	11.0	34.5
30	44.6	50	38.0	43.3	39.0	30	9.0	1.8	3.7	9.6	11.0	37.0
32	44.6	50	38.0	43.3	39.0	30	9.0	1.8	3.7	9.6	11.0	39.0
35	49.5	60	45.0	53.5	50.5	39	11.5	2.1	5.4	12.0	14.3	43.0
38	54.0	68	52.0	60.5	50.5	39	11.5	2.1	5.4	12.0	14.3	46.0
40	56.0	68	52.0	60.5	50.5	39	11.5	2.1	5.4	12.0	14.3	48.0
42	58.5	68	52.0	60.5	50.5	39	11.5	2.1	5.4	12.0	14.3	50.0
45	63.5	72	57.0	65.5	52.5	41	11.5	2.1	5.4	13.0	15.2	53.5
48	65.5	72	57.0	65.5	52.5	41	11.5	2.1	5.4	13.0	15.2	57.0
50	68.0	80	64.0	72.5	56.5	45	11.5	2.1	5.4	13.0	15.2	59.0
55	73.5	80	64.0	72.5	58.5	47	11.5	2.1	5.4	13.0	15.2	65.0
60	79.0	87	72.0	79.3	60.5	49	11.5	2.1	5.4	13.5	18.2	71.0
65	86.0	92	77.0	84.5	62.5	51	11.5	2.1	5.4	13.5	18.2	76.0



Uygulamalar

Sıcaklık: -20~180°C

Basınç: ≤1MPa

Çevresel hız: ≤10m/s

Pompalar: Su pompaları atık su pompaları ve kimyasal pompalar.

Malzemeler

*Sabit ring: Seramik/Silisyum/Tungsten Karbür

*Döner ring: Karbon/Silisyum/Tungsten Karbür

*Sekonder keçe: NBR/EPDM/Viton

D1	D2	D3	D6	D7	D8	DB	L1N	L1	L2	L3	L5	L6	L7	L8	L9	B2
10	14	24	17	21	3	18	50	35.5	18	25.5	1.5	4	8.5	17.5	10.0	8.0
12	16	26	19	23	3	21	50	36.5	18	26.5	1.5	4	8.5	17.5	10.0	8.0
14	18	31	21	25	3	23	55	39.5	18	29.5	1.5	4	8.5	17.5	10.0	8.0
16	20	34	23	27	3	26	55	41.0	18	31.0	1.5	4	8.5	17.5	10.0	8.0
18	22	36	27	33	3	28	55	44.0	20	32.5	2.0	5	9.0	19.5	11.5	8.0
20	24	38	29	35	3	30	60	44.0	20	32.5	2.0	5	9.0	19.5	11.5	8.0
22	26	40	31	37	3	31	60	44.0	20	32.5	2.0	5	9.0	19.5	11.5	8.0
24	28	42	33	39	3	35	60	44.0	20	32.5	2.0	5	9.0	19.5	11.5	8.0
25	30	44	34	40	3	37	60	45.0	20	33.5	2.0	5	9.0	19.5	11.5	8.0
28	33	47	37	43	3	40	65	47.0	20	35.5	2.0	5	9.0	19.5	11.5	8.0
30	35	49	39	45	3	43	65	47.0	20	35.5	2.0	5	9.0	19.5	11.5	8.0
32	38	54	42	48	3	45	65	51.0	20	39.5	2.0	5	9.0	19.5	11.5	7.5
33	38	54	42	48	3	45	65	51.0	20	39.5	2.0	5	9.0	19.5	11.5	7.5
35	40	56	44	50	3	49	65	55.0	20	43.5	2.0	5	9.0	19.5	11.5	8.0
38	43	59	49	56	4	52	75	60.0	23	46.0	2.0	5	9.0	22.0	14.0	7.5
40	45	61	51	58	4	55	75	62.0	23	48.0	2.0	6	9.0	22.0	14.0	8.0
43	48	64	54	61	4	58	75	65.0	23	51.0	2.0	6	9.0	22.0	14.0	8.0
45	50	66	56	63	4	61	75	69.0	23	55.0	2.0	6	9.0	22.0	14.0	(8)
48	53	69	59	66	4	64	85	69.0	23	55.0	2.0	6	9.0	22.0	14.0	8.0
50	55	71	62	70	4	66	85	73.0	25	58.0	2.5	6	9.0	23.0	15.0	8.0
53	58	78	65	73	4	69	85	75.0	25	60.0	2.5	6	9.0	23.0	15.0	8.0
55	60	79	67	75	4	71	85	75.0	25	60.0	2.5	6	9.0	23.0	15.0	8.0
58	63	83	70	78	4	74	85	75.0	25	60.0	2.5	6	9.0	23.0	15.0	8.0
60	65	85	72	80	4	77	95	75.5	25	60.0	2.5	6	9.0	23.0	15.0	8.0
63	68	88	75	83	4	80	95	75.0	25	60.0	2.5	6	9.0	23.0	15.0	8.0
65	70	90	77	85	4	83	95	76.0	25	61.0	2.5	6	9.0	23.0	15.0	10.0
70	75	98	83	92	4	88	95	81.0	28	63.0	2.5	7	9.0	26.0	18.0	10.0
75	80	103	88	97	4	93	105	86.0	28	68.0	2.5	7	9.0	26.0	18.0	10.0
80	85	109	95	105	4	98	105	86.0	28	68.0	3.0	7	9.0	26.2	18.2	10.0



Uygulamalar

Sıcaklık: -30~200°C

Basınç: $\leq 1,6$ MPa

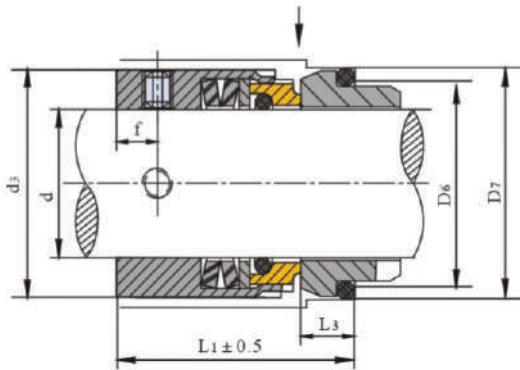
Çevresel hız: ≤ 20 m/s

Malzemeler

Sabit ring: Karbon/Silisyum/Tungsten Karbür

Döner ring: Silisyum/Tungsten Karbür/Karbon

Sekonder keçe: Viton/PTFE+Viton



d(mm)	d ₃	d ₆	d ₇	L ₁	L ₃	f
14	25.0	21	25.0	35.0	10.0	6.0
16	27.0	23	27.0	35.0	10.0	6.0
18	33.0	27	33.0	37.5	11.5	7.0
20	35.0	29	35.0	37.5	11.5	7.0
22	37.0	31	37.0	37.5	11.5	7.0
24	39.0	33	39.0	40.0	11.5	8.0
25	40.0	34	40.0	40.0	11.5	8.0
28	43.0	37	43.0	42.5	11.5	8.0
30	45.0	39	45.0	42.5	11.5	8.0
32	47.0	42	48.0	42.5	11.5	8.0
33	48.0	42	48.0	42.5	11.5	8.0
35	50.0	44	50.0	42.5	11.5	8.0
38	55.0	49	56.0	45.0	14.0	8.0
40	57.0	51	58.0	45.0	14.0	8.0
43	60.0	54	61.0	45.0	14.0	8.0
45	62.0	56	63.0	45.0	14.0	8.0
48	65.0	59	66.0	45.0	14.0	8.0
50	67.0	62	70.0	47.5	15.0	8.0
53	70.0	65	73.0	47.5	15.0	8.0
55	72.0	67	75.0	47.5	15.0	8.0
58	79.0	70	78.0	52.5	15.0	9.0
60	81.0	72	80.0	52.5	15.0	9.0
63	84.0	75	83.0	52.5	15.0	9.0
65	86.0	77	85.0	52.5	15.0	9.0
68	89.0	81	90.0	52.5	18.0	9.0
70	91.0	83	92.0	60.0	18.0	9.0
75	99.0	88	97.0	60.0	18.0	10.0
80	104.0	95	105.0	60.0	18.2	10.0
85	109.0	100	110.0	60.0	18.2	10.0
90	114.0	105	115.0	65.0	18.2	10.0
95	119.0	110	120.0	65.0	17.2	10.0
100	124.0	115	125.0	65.0	17.2	10.0



Uygulamalar

Sıcaklık: -30~200°C

Basınç: ≤1,6MPa

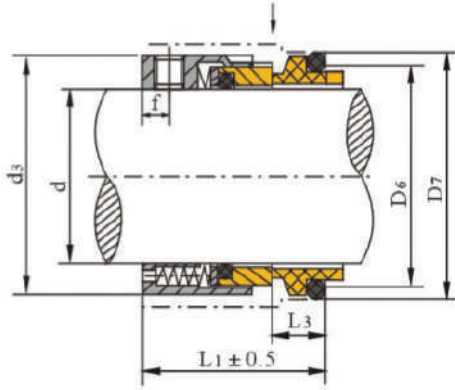
Çevresel hız: ≤20m/s

Malzemeler

Sabit ring: Karbon/Silisyum/Tungsten Karbür

Döner ring: Silisyum/Tungsten Karbür/Karbon

Sekonder keçe: Viton/PTFE+Viton



d(mm)	d ₃	d ₆	d ₇	L ₁	L ₃	f
14	25.0	21	25.0	35.0	10.0	6.0
16	27.0	23	27.0	35.0	10.0	6.0
18	33.0	27	33.0	37.5	11.5	7.0
20	35.0	29	35.0	37.5	11.5	7.0
22	37.0	31	37.0	37.5	11.5	7.0
24	39.0	33	39.0	40.0	11.5	8.0
25	40.0	34	40.0	40.0	11.5	8.0
28	43.0	37	43.0	42.5	11.5	8.0
30	45.0	39	45.0	42.5	11.5	8.0
32	47.0	42	48.0	42.5	11.5	8.0
33	48.0	42	48.0	42.5	11.5	8.0
35	50.0	44	50.0	42.5	11.5	8.0
38	55.0	49	56.0	45.0	14.0	8.0
40	57.0	51	58.0	45.0	14.0	8.0
43	60.0	54	61.0	45.0	14.0	8.0
45	62.0	56	63.0	45.0	14.0	8.0
48	65.0	59	66.0	45.0	14.0	8.0
50	67.0	62	70.0	47.5	15.0	8.0
53	70.0	65	73.0	47.5	15.0	8.0
55	72.0	67	75.0	47.5	15.0	8.0
58	79.0	70	78.0	52.5	15.0	9.0
60	81.0	72	80.0	52.5	15.0	9.0
63	84.0	75	83.0	52.5	15.0	9.0
65	86.0	77	85.0	52.5	15.0	9.0
68	89.0	81	90.0	52.5	18.0	9.0
70	91.0	83	92.0	60.0	18.0	9.0
75	99.0	88	97.0	60.0	18.0	10.0
80	104.0	95	105.0	60.0	18.2	10.0
85	109.0	100	110.0	60.0	18.2	10.0
90	114.0	105	115.0	65.0	18.2	10.0
95	119.0	110	120.0	65.0	17.2	10.0
100	124.0	115	125.0	65.0	17.2	10.0



Uygulamalar

Sıcaklık: -20~220°C

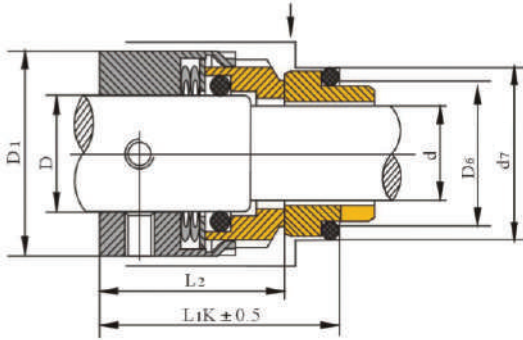
Basınç: ≤2,5MPa

Çevresel hız: ≤20m/s

Tasarım Özellikleri

*Sinus yaylı ve kurt yaylı

*Balanslı mekanik salmastra



d(mm)	D	D ₁	D ₆	D ₇	L ₂	L _{1K}
25	30	45	34	40	36.0	47.5
28	33	48	37	43	38.5	50.0
30	35	50	39	45	38.5	50.0
33	38	55	42	48	38.5	50.0
35	40	57	44	50	38.5	50.0
38	43	60	49	56	38.5	52.5
40	45	62	51	58	38.5	52.5
43	48	65	54	61	38.5	52.5
45	50	67	56	63	38.5	52.5
48	53	70	59	66	38.5	52.5
50	55	72	62	70	42.5	57.5
53	58	79	65	73	42.5	57.5
55	60	81	67	75	42.5	57.5
60	65	86	72	80	47.5	62.5
65	70	91	77	85	47.5	62.5
70	75	99	83	92	52	70.0
75	80	104	88	97	52	70.0
80	85	109	95	105	51.8	70.0
85	90	114	100	110	56.8	75.0
90	95	119	105	115	56.8	75.0
95	100	124	110	120	57.8	75.0



Uygulamalar

Sıcaklık: -40~150°C

Basınç: ≤1,7MPa

Çevresel hız: 25m/s

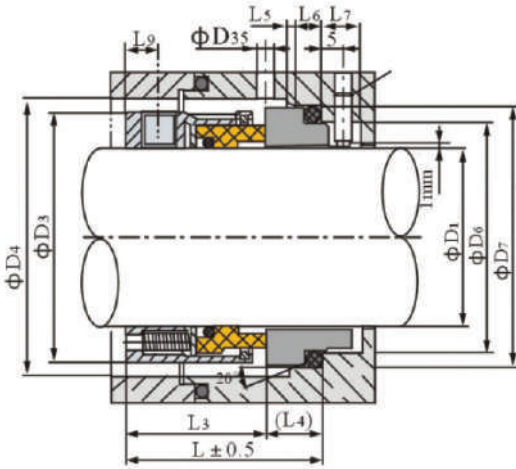
Uygulamalar:

Tüm döner ekipmanlar, pompalar, mikserler, karıştırıcılar ve kompresörler için. Genel kimya, rafineri petrokimya, ilaç, gıda prosesleri, kağıt hamuru ve kağıt, atık su işleme gibi endüstriyel alanlarda kullanılmaktadır.

Tasarım Özellikleri

*Oring baskılı tip mekanik salmastra

*Balansız, kurt yaylı tasarım yüzeye dengeli yük dağılımını sağlar.



D1	D3	D4	D6	D7	E	D35	L	L3	L4	L5	L6	L7	L8	L9	L10
14	24	26	21	25	2	6.5	35.0	23.0	12.0	1.5	4	8.5	12.5	4.0	18.0
16	26	28	23	27	2	6.5	35.0	23.0	12.0	1.5	4	8.5	12.5	4.0	18.0
18	32	34	27	33	3	6.5	37.5	24.0	13.5	2.0	5	9.0	14.5	5.0	20.0
20	34	36	29	35	3	6.5	37.5	24.0	13.5	2.0	5	9.0	14.5	5.0	20.0
22	36	38	31	37	3	6.5	37.5	24.0	13.5	2.0	5	9.0	14.5	5.0	20.0
24	38	40	33	39	3	6.5	40.0	26.7	13.3	2.0	5	9.0	14.5	5.0	19.8
25	39	41	34	40	3	6.5	40.0	27.0	13.0	2.0	5	9.0	14.0	5.0	19.5
28	42	44	37	43	3	6.5	42.5	30.0	12.5	2.0	5	9.0	13.5	7.5	19.0
30	44	46	39	45	3	6.5	42.5	30.5	12.0	2.0	5	9.0	13.0	7.5	18.5
32	46	48	42	48	3	6.5	42.5	30.5	12.0	2.0	5	9.0	13.0	7.5	18.5
33	47	49	42	48	3	6.5	42.5	30.5	12.0	2.0	5	9.0	13.0	6.5	18.5
35	49	51	44	50	3	6.5	42.5	30.5	12.0	2.0	5	9.0	13.0	6.5	18.5
38	54	58	49	56	4	6.5	45.0	32.0	13.0	2.0	6	9.0	14.0	8.0	19.5
40	56	60	51	58	4	6.5	45.0	32.0	13.0	2.0	6	9.0	14.0	8.0	19.5
43	59	63	54	61	4	6.5	45.0	32.0	13.0	2.0	6	9.0	14.0	8.0	19.5
45	61	65	56	63	4	6.5	45.0	32.0	13.0	2.0	6	9.0	14.0	8.0	19.5
48	64	68	59	66	4	6.5	45.0	32.0	13.0	2.0	6	9.0	14.0	5.5	19.5
50	66	70	62	70	4	6.5	47.5	34.0	13.5	2.5	6	9.0	14.5	6.5	20.0
53	69	73	65	73	4	6.5	47.5	34.0	13.5	2.5	6	9.0	14.5	5.5	20.0
55	71	75	67	75	4	6.5	47.5	34.0	13.5	2.5	6	9.0	14.5	5.5	20.0
58	78	83	70	78	4	6.5	52.5	39.0	13.5	2.5	6	9.0	14.5	7.5	20.0
60	80	85	72	80	4	6.5	52.5	39.0	13.5	2.5	6	9.0	14.5	7.5	20.0
63	83	88	75	83	4	6.5	52.5	39.0	13.5	2.5	6	9.0	14.5	7.5	20.0
65	85	90	77	85	4	6.5	52.5	39.0	13.5	2.5	6	9.0	14.2	7.5	20.0
68	88	93	81	90	4	6.5	52.5	39.0	13.5	2.5	7	9.0	14.2	7.5	20.0
70	90	95	83	92	4	6.5	60.0	45.5	14.5	2.5	7	9.0	15.2	7.5	21.0
75	95	104	88	97	4	6.5	60.0	45.5	14.5	2.5	7	9.0	15.2	7.8	21.0
80	104	109	95	105	4	9.5	60.0	45.0	15.0	3.0	7	9.0	15.7	7.8	21.5
85	109	114	100	110	4	9.5	60.0	45.0	15.0	3.0	7	9.0	15.7	7.8	21.5
90	114	119	105	115	4	9.5	65.0	50.0	15.0	3.0	7	9.0	15.7	7.8	21.5
95	119	124	110	120	4	9.5	65.0	50.0	15.0	3.0	7	9.0	15.7	7.8	21.5
100	124	129	115	125	4	9.5	65.0	50.0	15.0	3.0	7	9.0	15.7	7.8	21.5



Uygulamalar

Sıcaklık: -40~150°C

Basınç: ≤6,2MPa

Çevresel hız: 25m/s

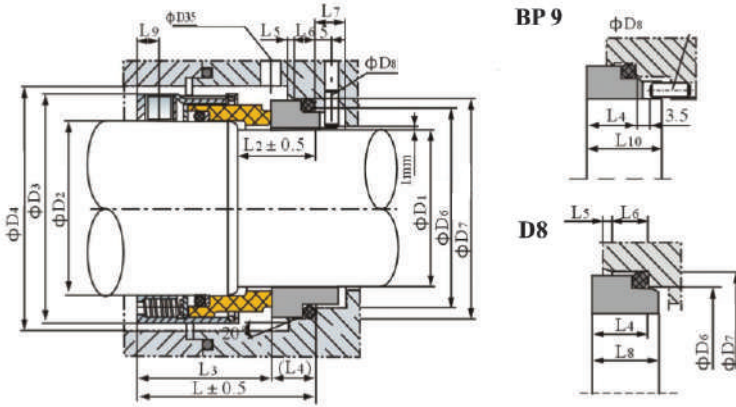
Uygulamalar:

Tüm döner ekipmanlar, pompalar, mikserler, karıştırmacılar ve kompresörler için. Genel kimya, rafineri petrokimya, ilaç, gıda prosesleri, kağıt hamuru ve kağıt, atık su işleme gibi endüstriyel alanlarda kullanılmaktadır.

Tasarım Özellikleri

*Oring baskılı tip mekanik salmastra

*Balansız, kurt yaylı tasarım yüzeye dengeli yük dağılımını sağlar.



D1	D2	D3	D4	D6	D7	D8	D35	L	L2	L3	L4	L5	L6	L7	L8	L9	L10
14	18	32	34	21	25	3	6.5	42.5	18	30.5	12.0	1.5	4.0	8.5	12.5	5.0	18.0
16	20	34	36	23	27	3	6.5	42.5	18	30.5	12.0	1.5	4.0	8.5	12.5	5.0	18.0
18	22	36	38	27	33	3	6.5	45.0	20	31.5	13.5	2.0	5.0	9.0	14.5	5.0	20.0
20	24	38	40	29	35	3	6.5	45.0	20	31.5	13.5	2.0	5.0	9.0	14.5	5.0	20.0
22	26	40	42	31	37	3	6.5	45.0	20	31.5	13.5	2.0	5.0	9.0	14.5	5.0	20.0
24	28	42	44	33	39	3	6.5	47.5	20	34.2	13.3	2.0	5.0	9.0	14.5	7.5	19.8
25	30	44	46	34	40	3	6.5	47.5	20	34.5	13.0	2.0	5.0	9.0	14.0	7.5	19.5
28	33	47	49	37	43	3	6.5	50.0	20	37.5	12.5	2.0	5.0	9.0	13.5	6.5	19.0
30	35	49	51	39	45	3	6.5	50.0	20	38.0	12.0	2.0	5.0	9.0	13.0	6.5	18.5
32	38	54	58	42	48	3	6.5	50.0	20	38.0	12.0	2.0	5.0	9.0	13.0	8.0	18.5
33	38	54	58	42	48	3	6.5	50.0	20	38.0	12.0	2.0	5.0	9.0	13.0	8.0	18.5
35	40	56	60	44	50	3	6.5	50.0	20	38.0	12.0	2.0	5.0	9.0	13.0	8.0	18.5
38	43	59	63	49	56	4	6.5	52.5	23	39.5	13.0	2.0	6.0	9.0	14.0	8.0	19.5
40	45	61	65	51	58	4	6.5	52.5	23	39.5	13.0	2.0	6.0	9.0	14.0	8.0	19.5
43	48	64	68	54	61	4	6.5	52.5	23	39.5	13.0	2.0	6.0	9.0	14.0	5.5	19.5
45	50	66	70	56	63	4	6.5	52.5	23	39.5	13.0	2.0	6.0	9.0	14.0	6.5	19.5
48	53	69	73	59	66	4	6.5	52.5	23	39.5	13.0	2.0	6.0	9.0	14.0	5.5	19.5
50	55	71	75	62	70	4	6.5	57.5	25	44.0	13.5	2.5	6.0	9.0	14.5	5.5	20.0
53	58	78	83	65	73	4	6.5	57.5	25	44.0	13.5	2.5	6.0	9.0	14.5	7.5	20.0
55	60	80	85	67	75	4	6.5	57.5	25	44.0	13.5	2.5	6.0	9.0	14.5	7.5	20.0
58	63	83	88	70	78	4	6.5	62.5	25	49.0	13.5	2.5	6.0	9.0	14.5	7.5	20.0
60	65	85	90	72	80	4	6.5	62.5	25	49.0	13.5	2.5	6.0	9.0	14.5	7.5	20.0
63	68	88	93	75	83	4	6.5	62.5	25	49.0	13.5	2.5	6.0	9.0	14.5	7.5	20.0
65	70	90	95	77	85	4	6.5	62.5	25	49.0	13.5	2.5	6.0	9.0	14.2	7.5	20.0
70	75	95	104	83	92	4	6.5	70.0	28	55.5	14.5	2.5	7.0	9.0	15.2	7.8	21.0
75	80	104	109	88	97	4	6.5	70.0	28	55.5	14.5	2.5	7.0	9.0	15.2	7.8	21.0
80	85	109	114	95	105	4	9.5	70.0	28	55.0	15.0	3.0	7.0	9.0	15.7	7.8	21.5
85	90	114	119	100	110	4	9.5	75.0	28	60.0	15.0	3.0	7.0	9.0	15.7	7.8	21.5
90	95	119	124	105	115	4	9.5	75.0	28	60.0	15.0	3.0	7.0	9.0	15.7	7.8	21.5
95	100	124	129	110	120	4	9.5	75.0	28	60.0	15.0	3.0	7.0	9.0	15.7	7.8	21.5
100	105	129	134	115	125	4	9.5	75.0	28	60.0	15.0	3.0	7.0	9.0	15.7	7.8	21.5



Uygulamalar

Sıcaklık: -50-250°C

Basınç: ≤1,7MPa

Çevresel hız: 25m/s

Uygulamalar:

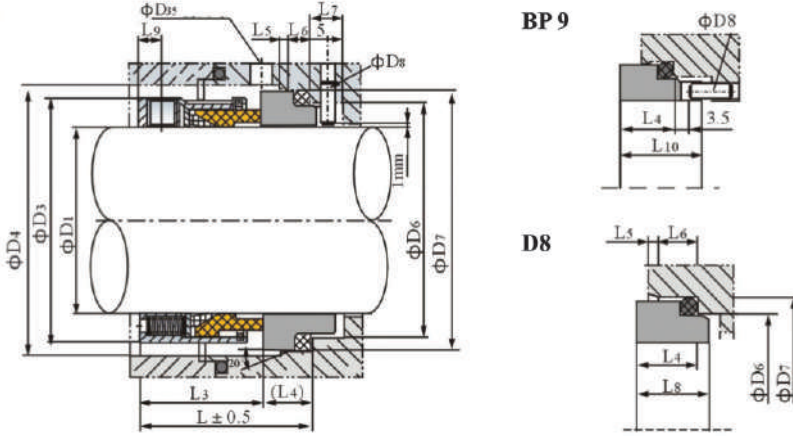
Tüm döner ekipmanlar, pompalar, mikserler, karıştırıcılar ve kompresörler için. Genel kimya, rafineri petrokimya, ilaç, gıda prosesleri, kağıt hamuru ve kağıt, atık su işleme gibi endüstriyel alanlarda kullanılmaktadır.

Tasarım Özellikleri

*PTFE veya esnek grafit ring sekonder keçe olarak kullanılır. Yüksek sıcaklıklı korozif akışkanlar için uygundur

*Balansız, kurt yaylı tasarım yüzeye dengeli yük dağılımını sağlar.

GR6556. ISO 3069 DIN 24960 standartlarına uyur



D1	D3	D4	D6	D7	D8	D35	L	L3	L4	L5	L6	L7	L8	L9	L10
14	24	26	21	25	2	6.5	35.0	23.0	12.0	1.5	4	8.5	12.5	4.0	18.0
16	26	28	23	27	2	6.5	35.0	23.0	12.0	1.5	4	8.5	12.5	4.0	18.0
18	32	34	27	33	3	6.5	37.5	24.0	13.5	2.0	5	9.0	14.5	5.0	20.0
20	34	36	29	35	3	6.5	37.5	24.0	13.5	2.0	5	9.0	14.5	5.0	20.0
22	36	38	31	37	3	6.5	37.5	24.0	13.5	2.0	5	9.0	14.5	5.0	20.0
24	38	40	33	39	3	6.5	40.0	26.7	13.3	2.0	5	9.0	14.5	5.0	19.8
25	39	41	34	40	3	6.5	40.0	27.0	13.0	2.0	5	9.0	14.0	5.0	19.5
28	42	44	37	43	3	6.5	42.5	30.0	12.5	2.0	5	9.0	13.5	7.5	19.0
30	44	46	39	45	3	6.5	42.5	30.5	12.0	2.0	5	9.0	13.0	7.5	18.5
32	46	48	42	48	3	6.5	42.5	30.5	12.0	2.0	5	9.0	13.0	7.5	18.5
33	47	49	42	48	3	6.5	42.5	30.5	12.0	2.0	5	9.0	13.0	6.5	18.5
35	49	51	44	50	3	6.5	42.5	30.5	12.0	2.0	5	9.0	13.0	6.5	18.5
38	54	58	49	56	4	6.5	45.0	32.0	13.0	2.0	6	9.0	14.0	8.0	19.5
40	56	60	51	58	4	6.5	45.0	32.0	13.0	2.0	6	9.0	14.0	8.0	19.5
43	59	63	54	61	4	6.5	45.0	32.0	13.0	2.0	6	9.0	14.0	8.0	19.5
45	61	65	56	63	4	6.5	45.0	32.0	13.0	2.0	6	9.0	14.0	8.0	19.5
48	64	68	59	66	4	6.5	45.0	32.0	13.0	2.0	6	9.0	14.0	5.5	19.5
50	66	0	62	70	4	6.5	47.5	34.0	13.5	2.5	6	9.0	14.5	6.5	20.0
53	69	73	65	73	4	6.5	47.5	34.0	13.5	2.5	6	9.0	14.5	5.5	20.0
55	71	75	67	75	4	6.5	47.5	34.0	13.5	2.5	6	9.0	14.5	5.5	20.0
58	78	83	70	78	4	6.5	52.5	39.0	13.5	2.5	6	9.0	14.5	7.5	20.0
60	80	85	72	80	4	6.5	52.5	39.0	13.5	2.5	6	9.0	14.5	7.5	20.0
63	83	88	75	83	4	6.5	52.5	39.0	13.5	2.5	6	9.0	14.5	7.5	20.0
65	85	90	77	85	4	6.5	52.5	39.0	13.5	2.5	6	9.0	14.2	7.5	20.0
68	88	93	81	90	4	6.5	52.5	39.0	13.5	2.5	7	9.0	14.2	7.5	20.0
70	90	95	83	92	4	6.5	60.0	45.5	14.5	2.5	7	9.0	15.2	7.5	21.0
75	95	104	88	97	4	6.5	60.0	45.5	14.5	2.5	7	9.0	15.2	7.8	21.0
80	104	109	95	105	4	9.5	60.0	45.0	15.0	3.0	7	9.0	15.7	7.8	21.5
85	109	114	100	110	4	9.5	60.0	45.0	15.0	3.0	7	9.0	15.7	7.8	21.5
90	114	119	105	115	4	9.5	65.0	50.0	15.0	3.0	7	9.0	15.7	7.8	21.5
95	119	124	110	120	4	9.5	65.0	50.0	15.0	3.0	7	9.0	15.7	7.8	21.5
100	124	129	115	125	4	9.5	65.0	50.0	15.0	3.0	7	9.0	15.7	7.8	21.5



Uygulamalar

Sıcaklık:-50~250°C

Basınç:≤6,2MPa

Çevresel hız:25m/s

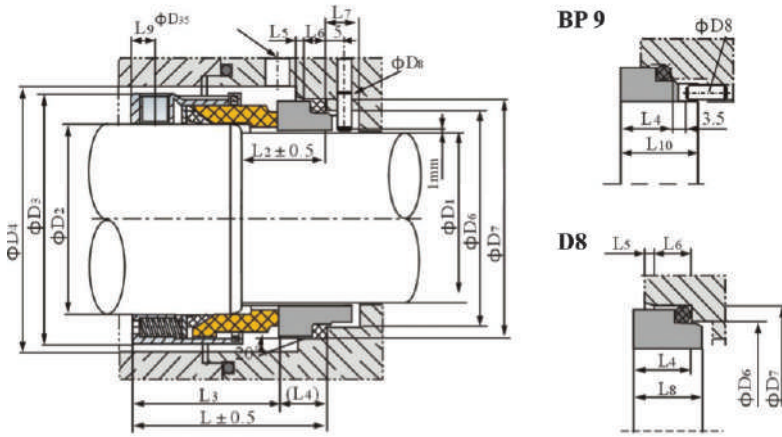
Uygulamalar:

Tüm döner ekipmanlar, pompalar, mikserler, karıştırıcılar ve kompresörler için. Genel kimya, rafineri petrokimya, ilaç, gıda prosesleri, kağıt hamuru ve kağıt, atık su işleme gibi endüstriyel alanlarda kullanılmaktadır.

Tasarım Özellikleri

*PTFE veya esnek grafit ring sekonder keçe olarak kullanılır. Yüksek sıcaklıklı korozif akışkanlar için uygundur

*Hidrolik balanslı, kurt yaylı tasarım yüksek basınçta düşük yüzey yük dağılımını sağlar.



D1	D2	D3	D4	D6	D7	D8	D35	L	L2	L3	L4	L5	L6	L7	L8	L9	L10
14	18	32	34	21	25	2	6.5	42.5	18	30.5	12.0	1.5	4.0	8.5	12.5	5.0	18.0
16	20	34	36	23	27	2	6.5	42.5	18	30.5	12.0	1.5	4.0	8.5	12.5	5.0	18.0
18	22	36	38	27	33	3	6.5	45.0	20	31.5	13.5	2.0	5.0	9.0	14.5	5.0	20.0
20	24	38	40	29	35	3	6.5	45.0	20	31.5	13.5	2.0	5.0	9.0	14.5	5.0	20.0
22	26	40	42	31	37	3	6.5	45.0	20	31.5	13.5	2.0	5.0	9.0	14.5	5.0	20.0
24	28	42	44	33	39	3	6.5	47.5	20	34.2	13.3	2.0	5.0	9.0	14.5	7.5	19.8
25	30	44	46	34	40	3	6.5	47.5	20	34.5	13.0	2.0	5.0	9.0	14.0	7.5	19.5
28	33	47	49	37	43	3	6.5	50.0	20	37.5	12.5	2.0	5.0	9.0	13.5	6.5	19.0
30	35	49	51	39	45	3	6.5	50.0	20	38.0	12.0	2.0	5.0	9.0	13.0	6.5	18.5
32	38	54	58	42	48	3	6.5	50.0	20	38.0	12.0	2.0	5.0	9.0	13.0	8.0	18.5
33	38	54	58	42	48	3	6.5	50.0	20	38.0	12.0	2.0	5.0	9.0	13.0	8.0	18.5
35	40	56	60	44	50	3	6.5	50.0	20	38.0	12.0	2.0	5.0	9.0	13.0	8.0	18.5
38	43	59	63	49	56	4	6.5	52.5	23	39.5	13.0	2.0	6.0	9.0	14.0	8.0	19.5
40	45	61	65	51	58	4	6.5	52.5	23	39.5	13.0	2.0	6.0	9.0	14.0	8.0	19.5
43	48	64	68	54	61	4	6.5	52.5	23	39.5	13.0	2.0	6.0	9.0	14.0	5.5	19.5
45	50	66	70	56	63	4	6.5	52.5	23	39.5	13.0	2.0	6.0	9.0	14.0	6.5	19.5
48	53	69	73	59	66	4	6.5	52.5	23	39.5	13.0	2.0	6.0	9.0	14.0	5.5	19.5
50	55	71	75	62	70	4	6.5	57.5	25	44.0	13.5	2.5	6.0	9.0	14.5	5.5	20.0
53	58	78	83	65	73	4	6.5	57.5	25	44.0	13.5	2.5	6.0	9.0	14.5	7.5	20.0
55	60	80	85	67	75	4	6.5	57.5	25	44.0	13.5	2.5	6.0	9.0	14.5	7.5	20.0
58	63	83	88	70	78	4	6.5	62.5	25	49.0	13.5	2.5	6.0	9.0	14.5	7.5	20.0
60	65	85	90	72	80	4	6.5	62.5	25	49.0	13.5	2.5	6.0	9.0	14.5	7.5	20.0
63	68	88	93	75	83	4	6.5	62.5	25	49.0	13.5	2.5	6.0	9.0	14.5	7.5	20.0
65	70	90	95	77	85	4	6.5	62.5	25	49.0	13.5	2.5	6.0	9.0	14.2	7.5	20.0
70	75	95	104	83	92	4	6.5	70.0	28	55.5	14.5	2.5	7.0	9.0	15.2	7.8	21.0
75	80	104	109	88	97	4	6.5	70.0	28	55.5	14.5	2.5	7.0	9.0	15.2	7.8	21.0
80	85	109	114	95	105	4	9.5	70.0	28	55.0	15.0	3.0	7.0	9.0	15.7	7.8	21.5
85	90	114	119	100	110	4	9.5	75.0	28	60.0	15.0	3.0	7.0	9.0	15.7	7.8	21.5
90	95	119	124	105	115	4	9.5	75.0	28	60.0	15.0	3.0	7.0	9.0	15.7	7.8	21.5
95	100	124	129	110	120	4	9.5	75.0	28	60.0	15.0	3.0	7.0	9.0	15.7	7.8	21.5
100	105	129	134	115	125	4	9.5	75.0	28	60.0	15.0	3.0	7.0	9.0	15.7	7.8	21.5



Uygulamalar

Sıcaklık: -40~150°C

Basınç: ≤1,7MPa

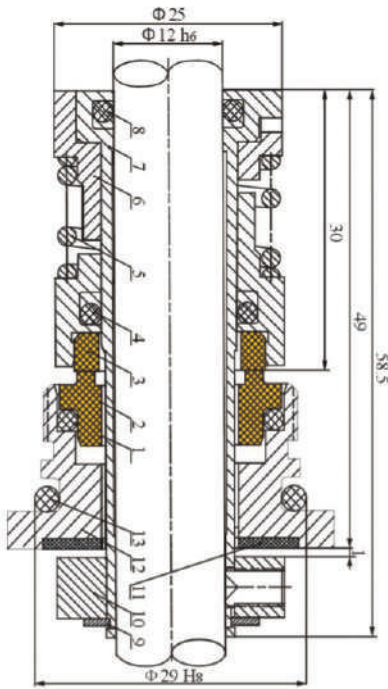
Çevresel hız: ≤25m/s

Malzemeler

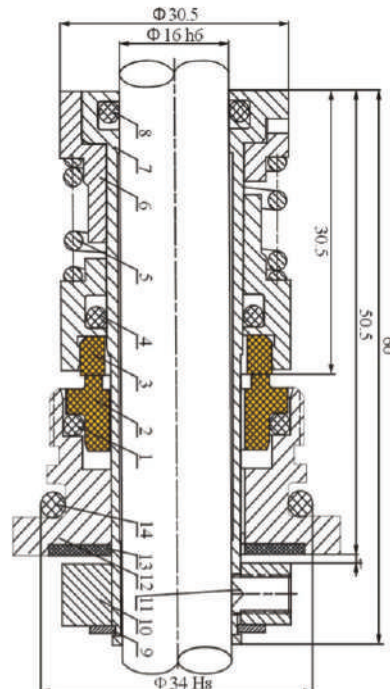
*Sabit ring: Karbon/Silisyum/Tungsten Karbür

*Döner ring: Silisyum/Tungsten Karbür

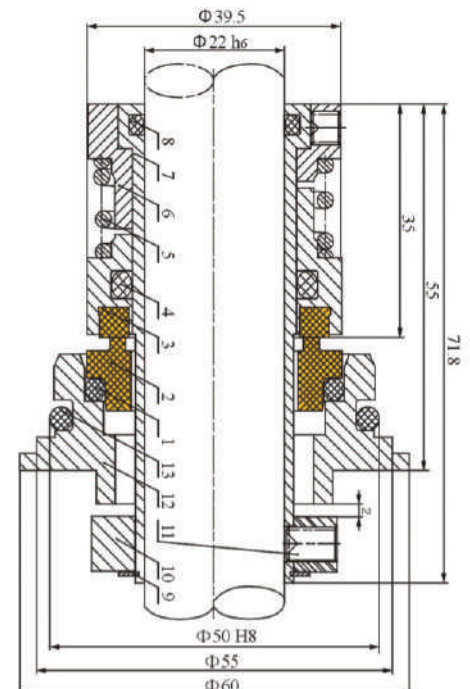
*Sekonder keçe: Viton/PTFE/PTFE kaplı Viton



12

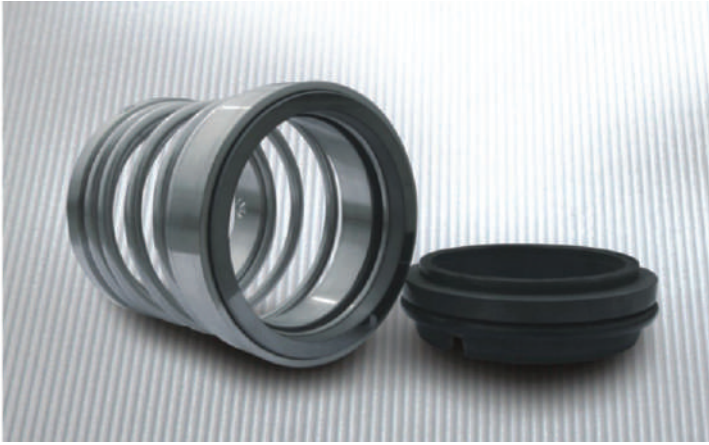


16



22

D ₁	D _s	D ₇	M	L	L ₁	L ₃
12	25	29	M28 × 1.5	58.5	49	30.0
16	30.5	34	M33 × 1.5	60	51	30.5
22	39.5	50	M49 × 1.5	71.8	55	35.0



Uygulamalar

Sıcaklık: -20~150°C

Basınç: ≤0,8MPa

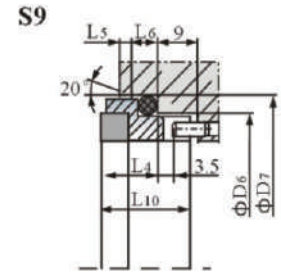
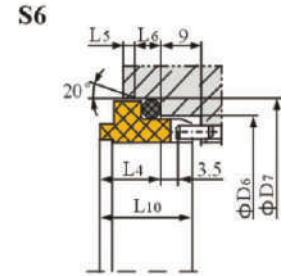
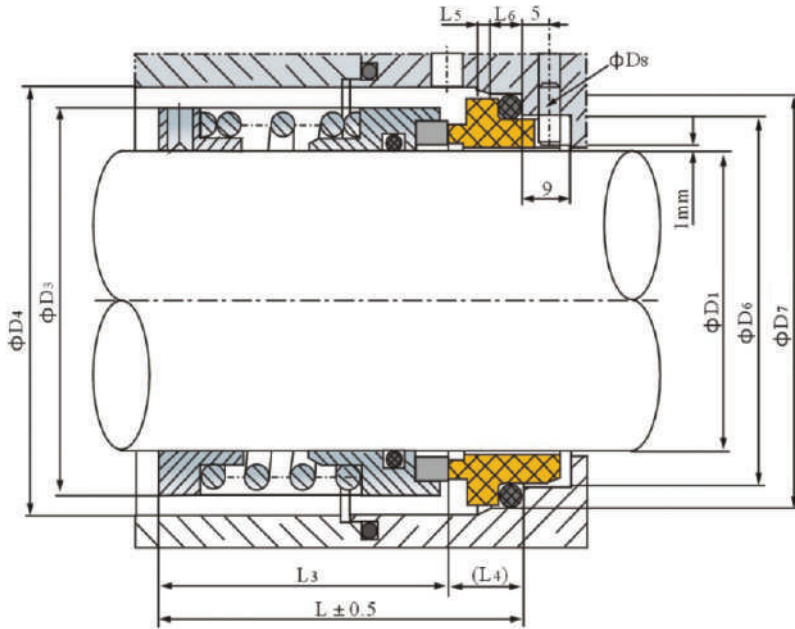
Çevresel hız: ≤13m/s

Yağ, su, atık su, genel korozif sıvılar için

Tasarım Özellikleri

*İçten monte, tekli yüzey, geniş yaylı, balansız yapı ve iki uçtan kapalı sarım yay tahrikli.

*Bu mekanik salmastra genel uygulamalar için tasarlanmıştır ve standartizasyona ideal uygundur.



D ₁	D ₃	D ₄	D ₆	D ₇	D ₈	L	L ₃	L ₄	L ₅	L ₆	L ₁₀
30	44	46	39	45	3	50.0	40.0	10	2.0	5.0	17.5
32	46	48	42	48	3	55.0	45.0	10	2.0	5.0	17.5
35	49	51	44	50	3	55.0	45.0	10	2.0	5.0	17.5
38	54	58	49	56	3	57.0	44.0	13	2.0	6.0	20.0
40	56	60	51	58	4	57.0	44.0	13	2.0	6.0	20.0
45	61	65	56	63	4	62.0	49.0	13	2.0	6.0	20.0
50	66	70	62	70	4	61.0	47.0	14	2.5	6.0	21.0
55	71	75	67	75	4	71.0	57.0	14	2.5	6.0	21.0
60	80	85	72	80	4	71.0	57.0	14	2.5	6.0	21.0
65	85	90	77	85	4	81.0	67.0	14	2.5	6.0	21.0
70	90	95	83	92	4	83.0	67.0	16	2.5	7.0	22.0
75	99	104	88	97	4	80.5	64.5	16	2.5	7.0	22.0
80	104	109	95	105	4	92.5	74.5	18	3.0	7.0	24.5
85	109	114	100	110	4	92.5	74.5	18	3.0	7.0	24.5
90	114	119	105	115	4	92.5	74.5	18	3.0	7.0	24.5
95	119	124	110	120	4	92.5	74.5	18	3.0	7.0	24.5
100	124	129	115	125	4	92.5	74.5	18	3.0	7.0	24.5



Uygulamalar

Sıcaklık: -20~180°C

Basınç: ≤1,2MPa

Çevresel hız: ≤16m/s

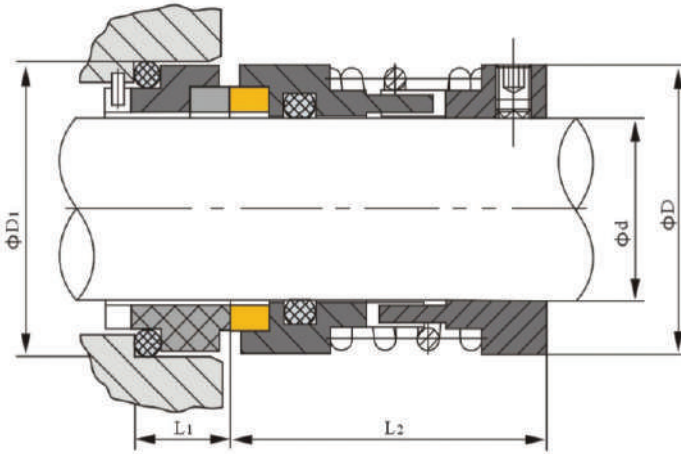
Ortam: Yağ, su, zayıf asit, zayıf alkali vb.

Malzemeler

*Sabit ring: Karbon/Seramik/Tungsten Karbür

*Döner ring: Karbon/Silisyum/Tungsten Karbür

*Sekonder keçe: NBR/EPDM/Viton



d	D	D ₁	L ₁	L ₂
20	34	35	13	41
22	36	37	13	41
24	38	39	13	43
25	39	40	13	43
28	42	43	13	45
30	44	45	13	45
33	47	48	13	45
35	49	50	13	49
38	54	56	13	53
40	56	58	13	55
43	59	61	13	55
45	61	63	13	55
48	64	66	13	55
50	66	68	13	60
53	69	71	13	61
55	71	73	16	61
58	76	79	16	63
60	78	81	16	63
63	81	84	16	63
65	83	86	16	67
70	90	92	16	68
75	95	97	16	72
80	100	105	16	72
85	105	110	16	77



Uygulamalar

Sıcaklık: -20~200°C

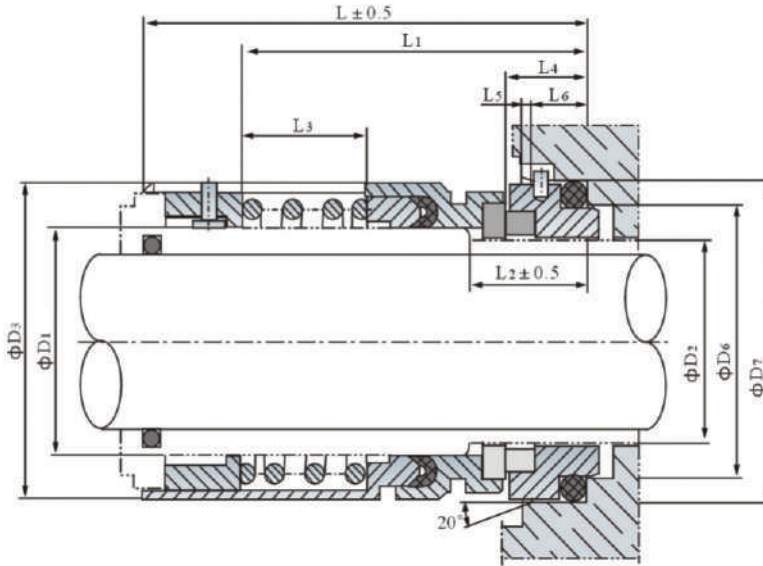
Basınç: ≤4MPa

Çevresel hız: ≤23m/s

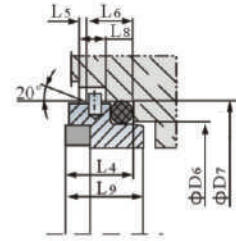
Ortam: Yağ, su ve diğer zayıf korozif akışkanlar

Tasarım Özellikleri

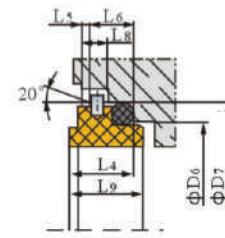
*İçten monte, tekli yüzey, tekli salmastra, balanslı yapı, daha iyi entegrasyon, kompakt konstrüksiyon



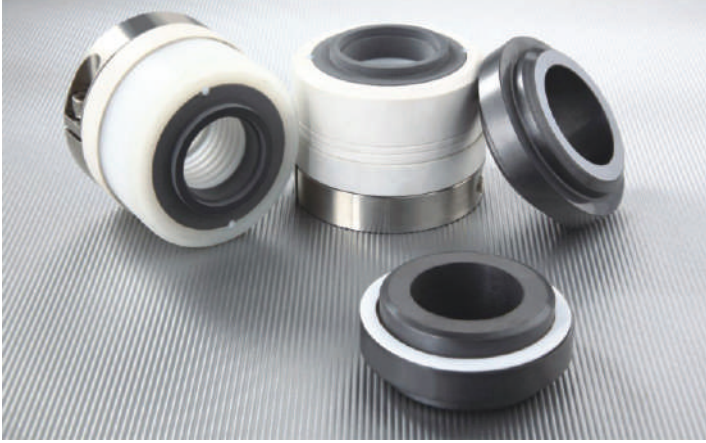
S23



S24



D1		D1	D2	D3	D6	D7	L	L1	L2	L3	L4	L5	L6	L8	L9
1.750"	U1750	44.5	39.6	62.0	52.5	62.0	89.0	69.0	23.5	25.0	16.3	2.0	10.5	6.0	18.8
2.125"	U2125	54.0	47.6	76.0	64.0	76.1	109.5	92.0	27.0	35.0	19.0	2.5	12.5	7.5	20.5
2.250"	U2250	57.0	52.3	75.0	64.0	73.0	89.0	71.0	27.0	27.0	19.0	2.5	12.5	7.5	20.5
2.500"	U2500	63.5	57.0	85.5	70.5	82.6	119.0	95.0	28.0	45.0	19.0	2.5	12.5	7.5	20.5
2.875"	UK2875	73.0	66.6	95.0	80.0	92.0	115.0	93.0	28.0	32.0	22.5	3.0	14.0	8.5	23.5
3.250"	UK3250	82.6	76.2	104.6	91.4	101.4	116.0	93.0	32.5	32.0	22.5	3.0	14.0	8.5	23.5
3.375"	UK3375	85.7	79.3	112.4	100.3	112.7	123.5	101.7	32.5	37.0	22.5	3.0	14.0	8.5	23.5
3.625"	UK3625	92.0	85.7	114.5	102.0	114.0	117.0	97.5	32.5	36.5	22.5	3.0	14.0	8.5	23.5
4.000"	UK4000	102.0	95.2	125.4	107.7	121.0	123.1	102.0	32.5	36.5	22.5	3.0	14.0	8.5	23.5



Uygulamalar

Sıcaklık: 0~102°C

Basınç: ≤0,83MPa

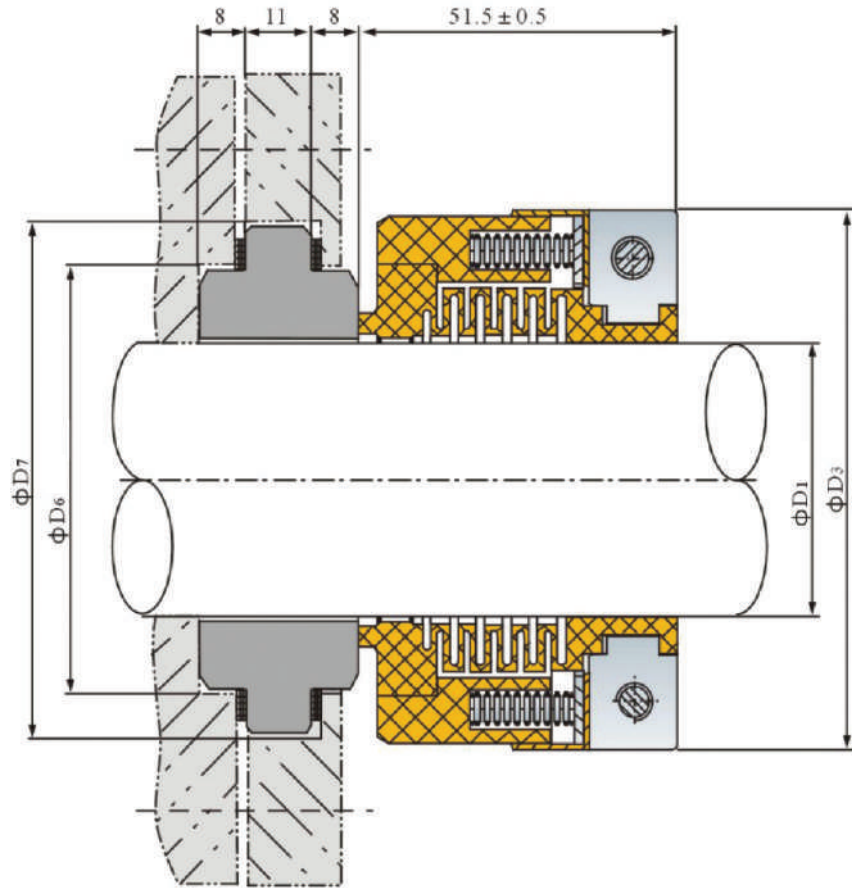
Çevresel hız: ≤14m/s

Ortam: Güçlü asit, güçlü oksidant ve diğer güçlü korozyif ortamlar

Tasarım Özellikleri

*Dıştan monte, tekli yüzey, kurt yaylı, saf PTFE körük tahrikli

*Baskısız, içten balanslı yapı, iyi kompensasyon esnekliği ve sağlam salmastra



D ₁	D ₃	D ₆	D ₇
30	74	54	68
35	79	58	71
40	84	63	77
45	89	70	84
50	96	73	87
60	106	86	102



Uygulamalar

Sıcaklık: 0~100°C

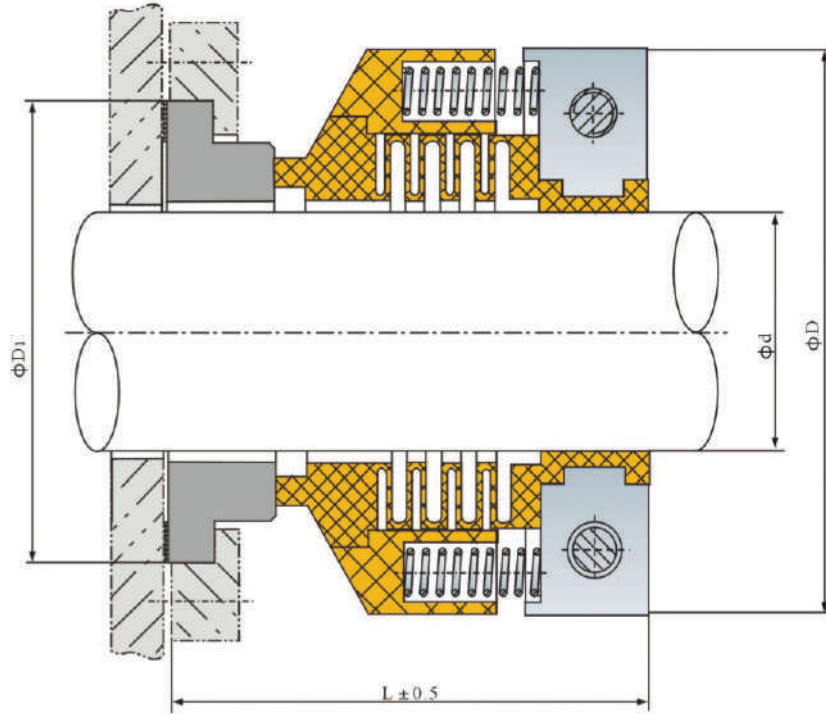
Basınç: ≤0,5MPa

Çevresel hız: ≤14m/s

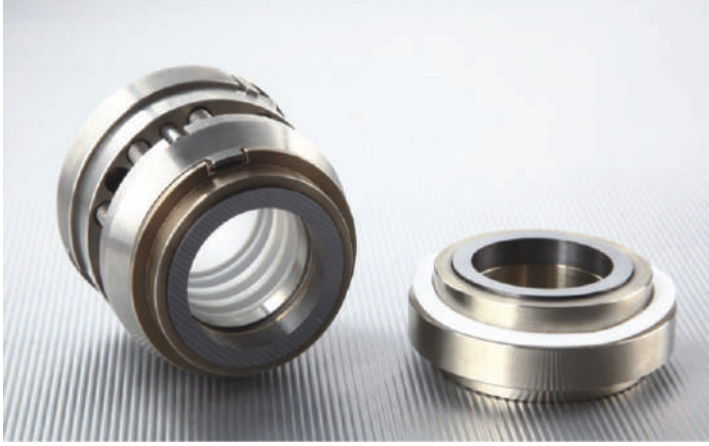
Ortam: Asit

Tasarım Özellikleri

*Dıştan monte, tekli yüzey, kurt yaylı, saf PTFE körük tahrikli.



d	D	D ₁	L
30	75	53	59
35	80	58	59
40	85	63	59
45	90	68	62
50	95	73	62
55	100	78	62
60	105	83	62
65	110	88	62
70	115	93	62



Uygulamalar

Sıcaklık: 0~130°C

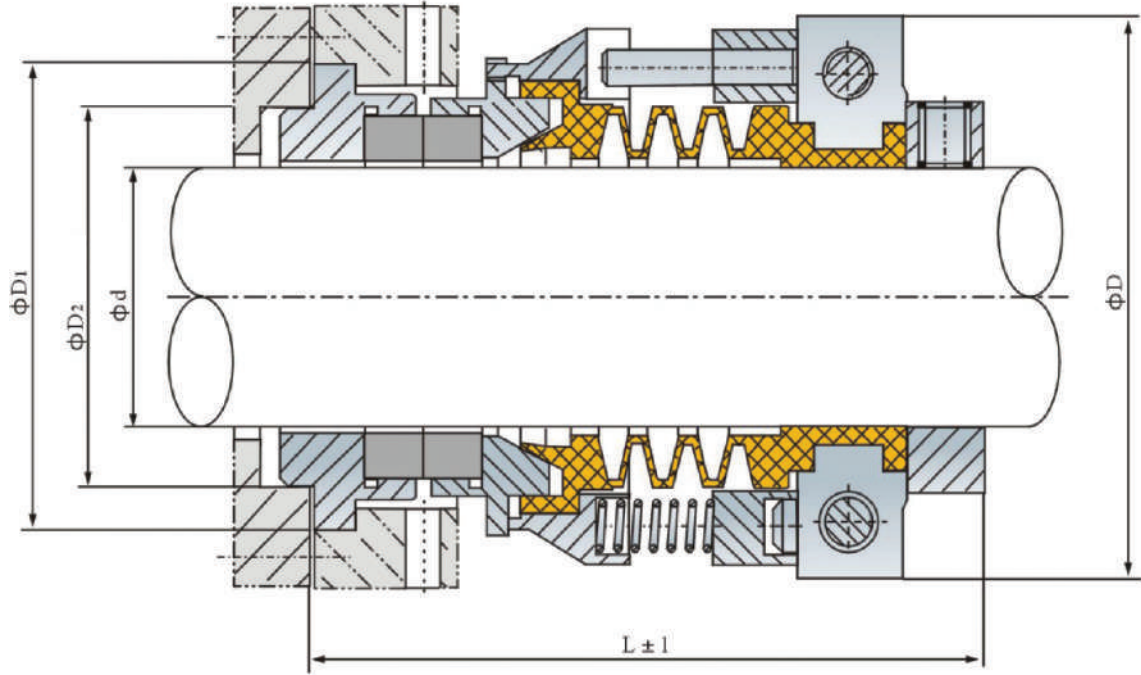
Basınç: ≤0,5MPa

Çevresel hız: ≤14m/s

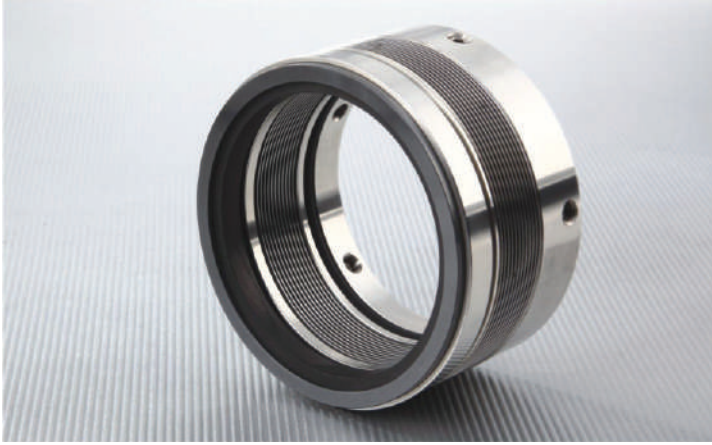
Ortam: % 10- 20 solid granül içeren %42'den düşük alkali sıvılar

Tasarım Özellikleri

*Dıştan monte, tekli yüzey, kurt yaylı, saf PTFE körük tahrikli.



d	D	D1	D2	L
30	65	54	44	74.5
35	70	59	49	74.5
38	75	63	54	74.5
40	75	66	56	74.5
45	82	71	61	74.5
50	87	76	66	74.5
55	92	81	71	74.5
60	97	90	80	74.5



Uygulamalar

Sıcaklık: -40~400 0C

Basınç: ≤4MPa

Çevresel hız: ≤25m/s

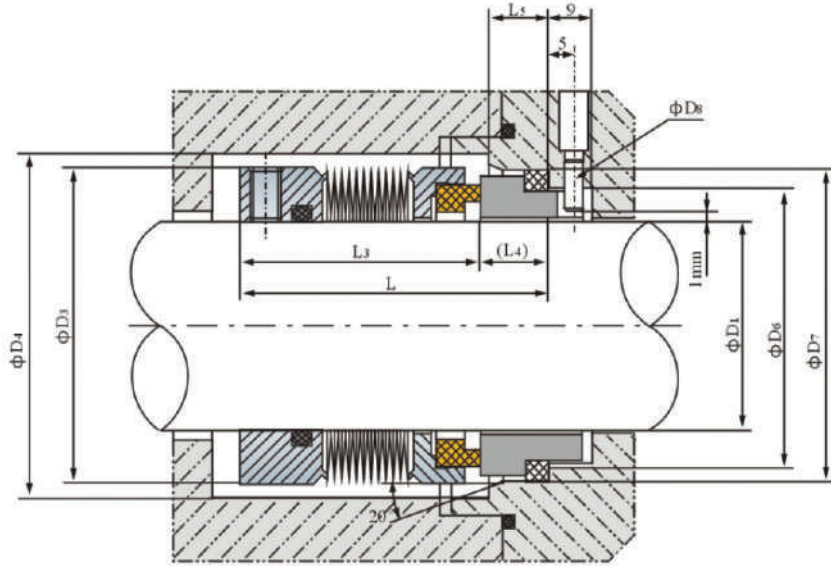
Uygulamalar: Genel kimya, rafineri , petrokimya soğutma sektörleri için uygundur. Yağ, sıcak su ve diğer zayıf korozif akışkanlar için kullanılabilir.

Tasarım Özellikleri

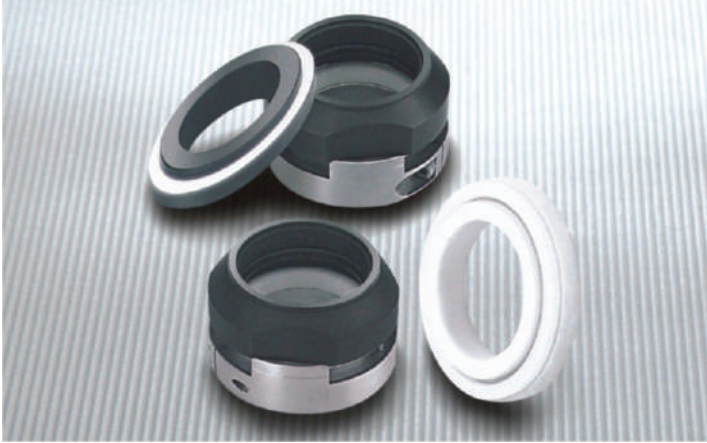
*Elastik komponenti, iyi performanslı "S" kaynaklı metal körüktür.

*Tekli yapı, daha iyi entegrasyon ve kompakt konstrüksiyon, sağlam salamstra, uzun ömürlü çalışma,

*İyi kompanzasyon esnekliği



D ₁	D ₃	D ₄	D ₆	D ₇	D ₈	L ₃	L ₄	L	L ₅
30	48	50	39	45	3	40	12.0	52.0	7
35	51	54	44	50	3	40	12.0	52.0	7
40	62	65	51	58	4	47	13.0	60.0	8
45	67	70	56	63	4	52	13.0	65.5	8
50	72	75	62	70	4	52	13.5	65.5	8.5
55	78	82	67	75	4	55	13.5	68.5	8.5
60	83	87	72	80	4	55	13.5	68.5	8.5
65	88	92	77	85	4	55	13.5	68.5	8.5
70	97	101	83	92	4	55	14.5	69.5	9.5
75	98	102	88	97	4	55	14.5	69.5	9.5
80	103	107	95	105	4	58	15.0	73.0	10
85	108	112	100	110	4	58	15.0	73.0	10
90	114.5	120	105	115	4	58	15.0	73.0	10
95	120	125	110	120	4	60	15.0	75.0	10
100	124	130	115	125	4	60	15.0	75.0	10



Uygulamalar

Sıcaklık: -30~200°C

Basınç: ≤1MPa

Çevresel hız: ≤10m/s

Ortam: Su, yağ, asit, alkali vb.

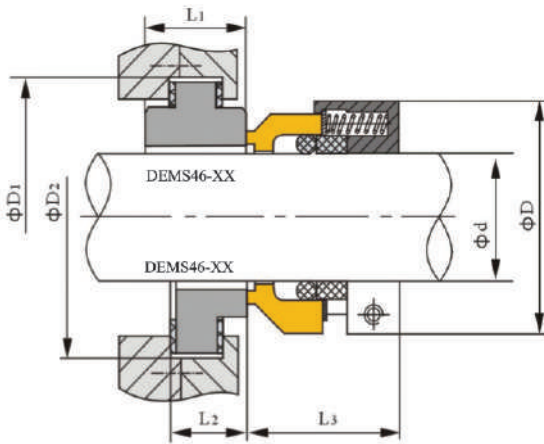
Malzemeler

*Sabit ring: Karbon/Silisyum/Tungsten Karbür

*Döner ring: Silisyum/Tungsten Karbür/Çelik

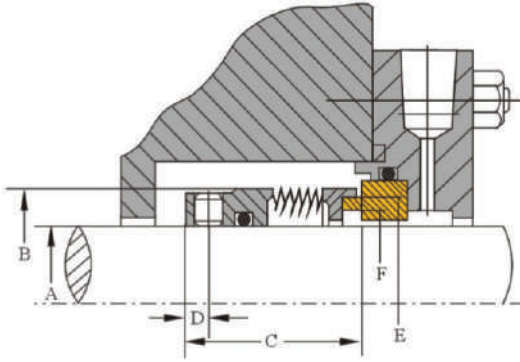
*Sekonder keçe: NBR/EPDM/Viton

*Yay ve diğer parçalar: SUS304/SUS316



d	d	D	D ₁	D ₂	L ₁	L ₂	L ₃
15/16"	23.83	50	54	51.5	17.6	17.4	38.2
6-1"	25.4	52	54	55.5	17.6	17.4	38.2
1 1/8"	28.58	55	65	58.5	27	17.4	38.2
1 1/4"	31.75	60	68	61.5	27	17.4	38.2
1 3/8"	34.93	62	71	63.5	27	17.4	38.2
1 1/2"	38.1	65	78	71.5	27	17.4	38.2
1 5/8"	41.28	68	81	74.5	27	17.4	38.2
1 3/4"	44.45	72	84	81	27	17.4	38.2
1 7/8"	47.63	75	87	84	27	17.4	42.2
6-2"	50.8	78	97	90.5	33.3	17.4	42.2
2 1/8"	53.98	80	100	97	33.3	17.4	42.2
2 1/4"	57.15	83	103	100	33.3	17.4	42.2
2 3/8"	60.33	86	106	100.5	33.3	17.4	42.2
2 1/2"	63.5	90	110	106	33.3	17.4	42.2
2 5/8"	66.68	98	113	109.5	33.3	17.4	42.2
2 3/4"	69.85	98	116	116	33.3	17.4	42.2
2 7/8"	73.03	105	117	119	33.3	17.4	42.2
6-3"	76.2	105	121	123.5	33.3	17.4	42.2
3 1/8"	79.38	109	129	133	33.3	17.4	42.2
3 1/4"	82.55	109	132	123.5	33.3	17.4	42.2
3 3/8"	85.73	114	135	123.5	33.3	17.4	42.2
3 1/2"	88.9	120	138	126.5	33.3	17.4	42.2
3 5/8"	92.08	120	141	134.5	33.3	17.4	42.2
3 3/4"	95.25	125	144	133	33.3	17.4	42.2
6-4"	101.6	130	151	158.5	33.3	17.4	42.2

d	D	D ₁	L ₁	L ₂
18	44	48	17.6	38.2
20	46	51	17.6	38.2
22	48	51	17.6	38.2
24	50	54	17.6	38.2
25	52	54	17.6	38.2
28	55	65	27	38.2
30	58	68	27	38.2
32	60	68	27	38.2
33	60	71	27	38.2
35	62	71	27	38.2
38	65	78	27	38.2
40	68	81	27	38.2
43	70	84	27	38.2
45	72	84	27	42.2
48	75	97	33.3	42.2
50	78	97	33.3	42.2
53	80	100	33.3	42.2
55	80	103	33.3	42.2
58	83	106	33.3	42.2
60	86	106	33.3	42.2
63	90	110	33.3	42.2
65	93	113	33.3	42.2
68	98	116	33.3	42.2
70	98	116	33.3	42.2
75	105	121	33.3	42.2
80	109	132	33.3	42.2
85	114	138	33.3	42.2
90	120	144	33.3	42.2
95	125	144	33.3	42.2
100	130	151	33.3	42.2



Uygulamalar

Sıcaklık: -75~200°C

Basınç: ≤2MPa

Çevresel hız: ≤25m/s

Malzemeler

*Sabit ring: Silisyum/Tungsten Karbür

*Döner ring: Karbon/Silisyum/Tungsten Karbür

*Sekonder keçe: Viton/PTFE/EPM kaplı PTFE

*Körük: SUS316L/AM350/Alloy20/HasteloyC

Titanyum

*Diğer parçalar: 300 serisi paslanmaz çelik

Hasteloy C/Alloy 20 /Titanyum

d(mm)	A +0.00 -0.05mm	B Ref	C +0.76mm	D Ref	E Ref	F Ref
18	18	32.0	27.5	3.3	28.7	23.5
20	20	33.3	27.5	3.3	30.1	25.0
22	22	36.0	27.5	3.3	32.7	27.5
24	24	38.1	30.0	4.3	34.9	29.8
25	25	39.0	30.0	4.3	35.7	30.5
28	28	42.0	32.5	5.6	38.7	33.5
30	30	44.0	32.5	5.1	40.7	35.5
32	32	46.0	32.5	5.1	43.7	38.5
33	33	47.0	32.5	4.3	43.7	38.5
35	35	49.2	32.5	4.3	46.9	41.7
38	38	52.4	34.0	5.1	50.0	43.6
40	40	55.6	34.0	5.1	53.2	46.8
43	43	58.7	34.0	5.1	56.4	49.9
45	45	58.7	34.0	5.1	56.4	49.9
48	48	61.9	34.5	5.1	59.6	53.1
50	50	65.1	34.5	5.1	62.8	56.3
53	53	68.3	34.5	5.1	65.9	59.4
55	55	71.0	39.5	4.3	68.5	62.0
60	60	74.6	39.5	6.6	72.3	65.8
65	65	84.1	39.5	6.1	81.8	74.0
70	70	87.3	45.0	8.1	85.0	77.2
75	75	95.3	45.0	7.9	92.1	84.4
80	80	98.4	44.5	6.6	95.8	87.3
85	85	104.8	44.5	6.6	102.2	93.7
90	90	108.0	49.5	8.9	105.3	96.8
95	95	114.3	49.5	8.9	111.7	103.2
100	100	120.7	49.5	8.9	118.0	109.5
105	105	131.7	48.3	7.1	124.8	114.9
110	110	138.1	48.3	7.1	131.2	121.3
115	115	144.5	48.3	7.1	137.6	129.1
120	120	144.5	48.3	7.1	137.6	129.1
125	125	150.8	48.3	7.1	143.9	134.0
130	130	157.8	48.3	7.1	150.9	139.9
140	140	170.5	48.3	7.1	163.6	152.7
150	150	176.9	48.3	7.1	170.0	159.0

d(Inch)	A +0.00 -0.002mm	B Ref	C +0.030	D Ref	E Ref	F Ref
0.750	0.750	1.312	1.250	0.175	1.186	0.985
0.875	0.875	1.437	1.250	0.175	1.313	1.110
0.937	0.937	1.500	1.250	0.175	1.376	1.171
1.000	1.000	1.562	1.250	0.175	1.438	1.235
1.125	1.125	1.687	1.250	0.175	1.565	1.362
1.250	1.250	1.812	1.312	0.175	1.719	1.516
1.375	1.375	1.937	1.437	0.200	1.845	1.641
1.500	1.500	2.062	1.437	0.200	1.970	1.719
1.625	1.625	2.187	1.437	0.200	2.095	1.841
1.750	1.750	2.312	1.437	0.200	2.220	1.966
1.875	1.875	2.437	1.500	0.220	2.345	2.090
2.000	2.000	2.562	1.500	0.220	2.471	2.216
2.125	2.125	2.687	1.500	0.220	2.595	2.340
2.250	2.250	2.812	1.562	0.220	2.721	2.466
2.375	2.375	2.937	1.562	0.220	2.846	2.590
2.500	2.500	3.187	1.562	0.220	3.096	2.790
2.625	2.625	3.312	1.625	0.220	3.221	2.915
2.750	2.750	3.437	1.625	0.220	3.347	3.040
2.875	2.875	3.625	1.687	0.220	3.502	3.196
3.000	3.000	3.750	1.687	0.220	3.727	3.322
3.125	3.125	3.875	1.750	0.220	3.772	3.437
3.250	3.250	4.000	1.750	0.220	3.897	3.562
3.375	3.375	4.125	1.750	0.220	4.022	3.687
3.500	3.500	4.250	1.875	0.220	4.147	3.812
3.625	3.625	4.375	1.875	0.220	4.272	3.937
3.750	3.750	4.500	1.875	0.220	4.397	4.062
3.875	3.875	4.625	1.875	0.220	4.522	4.187
4.000	4.000	4.750	1.875	0.220	4.647	4.312
4.250	4.250	5.187	1.903	0.281	4.915	4.523
4.500	4.500	5.437	1.903	0.281	5.166	4.774
4.750	4.750	5.687	1.903	0.281	5.416	5.024
5.000	5.000	5.937	1.903	0.281	5.666	5.274
5.250	5.250	6.213	1.903	0.281	5.941	5.509
5.500	5.500	6.463	1.903	0.281	6.191	5.759
5.750	5.750	6.714	1.903	0.281	6.442	6.010
6.000	6.000	6.964	1.903	0.281	6.692	6.260



Teknik Özellikler

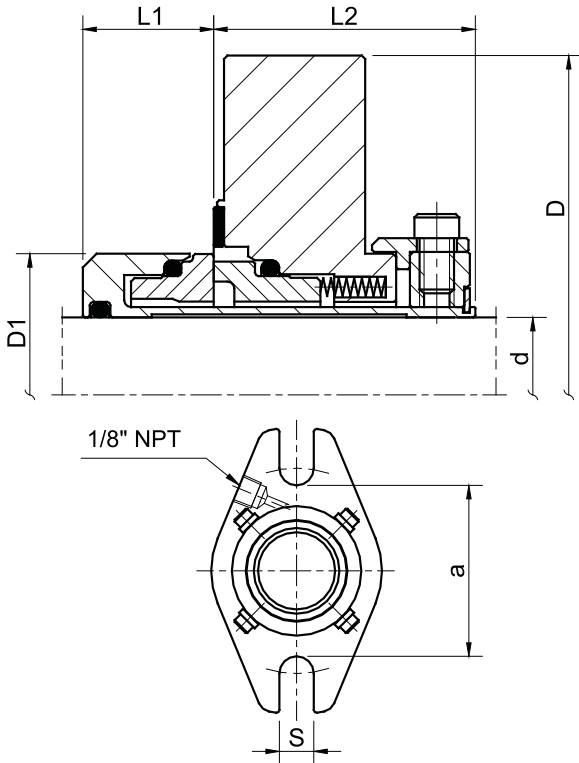
- *Tekli Kartuş Salmastra
- *Balanslı
- *Sabit Eleman Kurt Yaylı
- *Yaylar Ortamdan Muhafaza Edilmiştir.

Çalışma Limitleri

- $d_1 = 25 - 100 \text{ mm}, 1.000 - 4.000''$
- $p_1 = 2.0 \text{ MPa}$
- $t = -35 \sim 160 \text{ }^\circ\text{C}$
- $v_g = 30 \text{ m/s}$

Malzemeler

- *Döner Yüzey: Karbon, Silisyum, Tungsten
- *Sabit Yüzey: Silisyum, Tungsten
- *O-Ringler: EPDM, FPM, FEPM, HNBR
- *Yaylar: AISI316
- *Diğer Parçalar: AISI304, AISI316



d	d (in)	D	D1	L1	L2	a	S
24	-	104	43.5	19	38	62	12.5
25	1.000	104	43.5	19	38	62	12.5
28	1.125	104	46.5	19	38	62	12.5
30	-	104	48.5	19	38	65	12.5
32	1.250	104	50.0	19	38	67	12.5
33	-	104	50.0	19	38	67	12.5
35	1.375	115	53.5	19	38	70	12.5
38	1.500	125	56.5	19	38	75	14.7
40	-	125	58.5	19	38	75	14.7
42	1.625	133	60.5	19	38	80	14.7
43	-	133	61.5	19	38	80	14.7
45	1.750	140	63.5	19	38	81	14.7
48	1.875	140	66.5	19	38	84	14.7
50	2.000	140	68.5	19	38	87	14.7
53	2.125	150	71.5	19	38	90	17.5
55	-	150	73.5	19	38	92	17.5
58	2.250	155	76.6	19	38	95	17.5
60	2.375	160	78.5	19	38	100	17.5
63	2.500	165	81.5	19	38	103	17.5
65	-	165	83.5	19	38	105	17.5
-	2.625	170	85.5	19	38	110	17.5
68	-	170	86.5	19	38	110	17.5
70	2.750	180	88.5	19	38	120	17.5
-	2.875	190	98.0	26	36	123	17.5
75	3.000	190	100.0	26	36	125	17.5
80	3.125	190	105.0	26	36	130	17.5
-	3.250	220	108.0	26	36	133	20.5
85	3.375	220	110.0	26	36	135	20.5
90	3.500	220	115.0	26	36	140	20.5
-	3.625	220	117.0	26	36	142	20.5
95	3.750	220	120.0	26	36	145	20.5
100	4.000	220	125.0	26	36	150	20.5



Teknik Özellikler

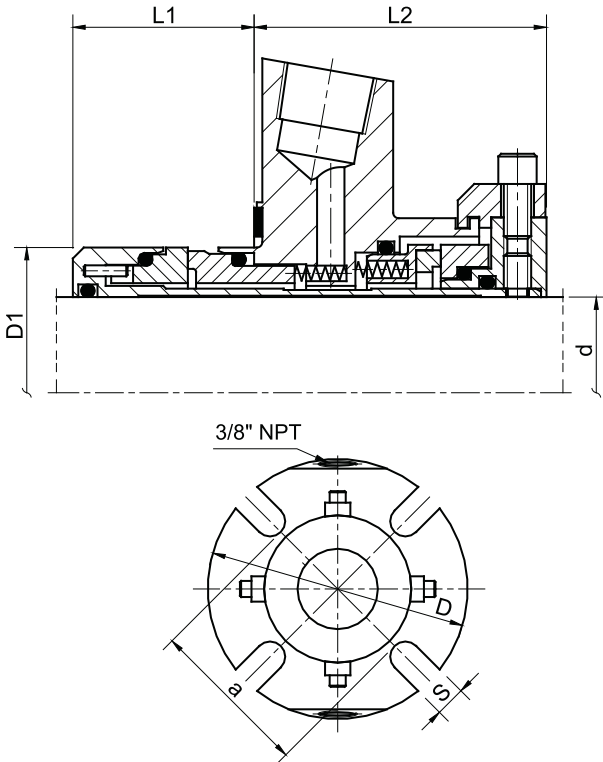
- *Çiftli Kartuş Salmastra
- *Çift Balanslı
- *Sabit Eleman Kurt Yaylı
- *Yaylar Ortamdan Muhafaza Edilmiştir.

Çalışma Limitleri

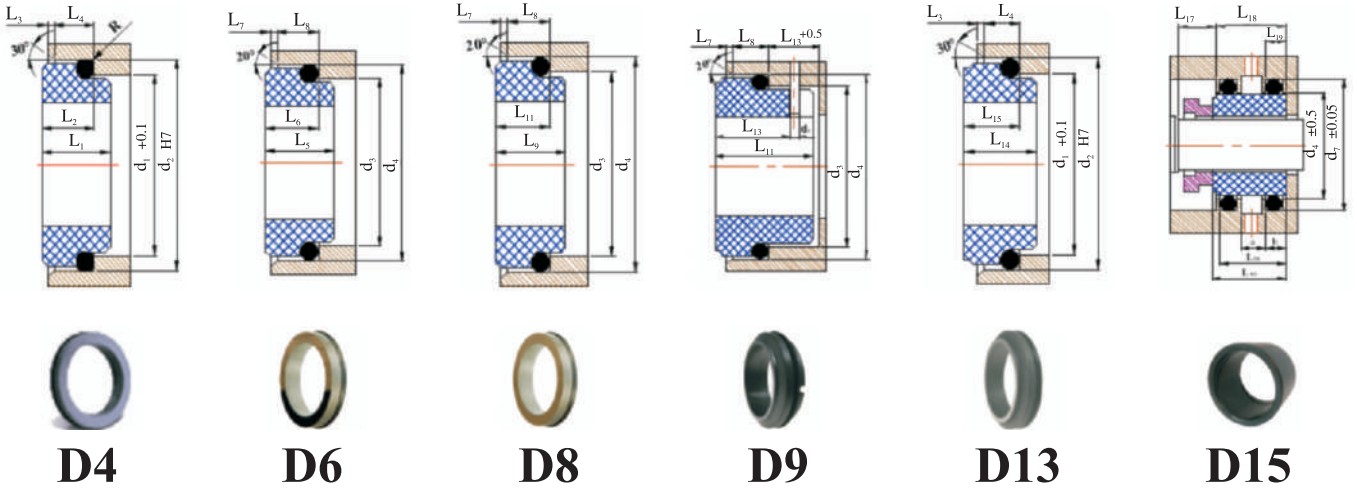
- $d_1 = 25 - 100 \text{ mm}$, 1.000 - 4.000"
- $p_1 = 2.0 \text{ MPa}$
- $t = -35 \sim 160 \text{ }^\circ\text{C}$
- $v_g = 30 \text{ m/s}$

Malzemeler

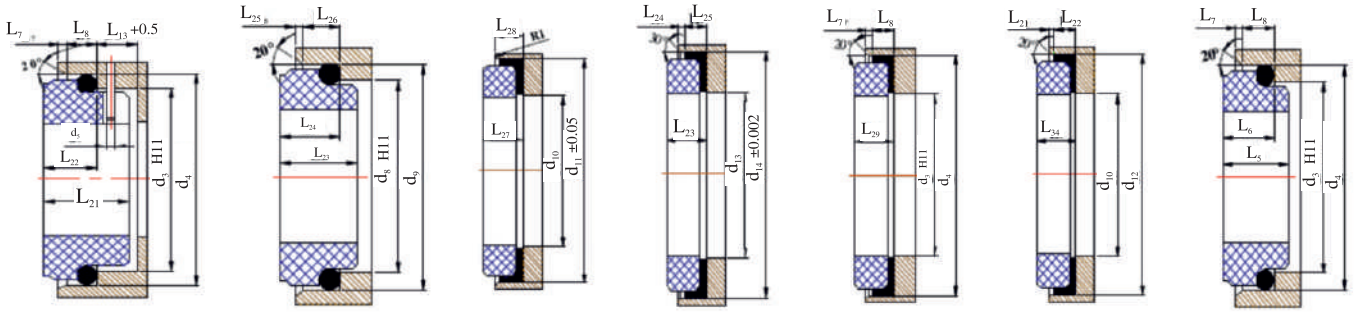
- *Döner Yüzey: Karbon, Silisyum, Tungsten
- *Sabit Yüzey: Silisyum, Tungsten
- *O-Ringler: EPDM, FPM, FEPM, HNBR
- *Yaylar: AISI316
- *Diğer Parçalar: AISI304, AISI316



d	d (in)	D	D1	L1	L2	a	S
25	1.000	105	43.0	33.1	53.4	62.0	13.2
-	1.125a	105	43.5	33.1	53.4	65.0	13.2
28	1.125b	105	46.0	33.1	53.4	65.0	13.2
30	-	105	48.0	33.1	53.4	67.0	13.2
32	1.250	108	49.8	33.1	53.4	70.0	13.2
33	-	108	49.8	33.1	53.4	70.0	13.2
-	1.375a	113	49.8	33.1	53.4	72.0	13.2
35	1.375b	113	53.0	33.1	53.4	72.0	13.2
38	1.500	123	56.0	33.1	53.4	75.0	13.2
40	-	123	58.0	33.1	53.4	77.0	14.2
-	1.625	123	59.4	33.1	53.4	78.5	14.2
42	-	133	60.5	33.1	53.4	80.0	14.2
43	-	133	60.5	33.1	53.4	80.0	14.2
45	1.750	138	62.5	33.1	53.4	82.0	14.2
48	1.875	138	65.6	33.1	53.4	85.0	14.2
50	2.000	148	68.0	33.1	53.4	87.0	14.2
53	2.125	148	72.0	33.1	53.4	97.0	18.0
55	-	148	73.0	33.1	53.4	92.0	18.0
-	2.250	157	75.2	33.1	53.4	100.0	18.0
60	2.375	157	78.0	33.1	53.4	102.0	18.0
-	2.500	163	81.6	33.1	53.4	106.0	18.0
65	2.625	163	84.8	33.1	53.4	109.0	18.0
70	2.750	178	93.0	33.1	53.4	118.0	18.0
-	2.875	185	96.8	44.1	63.9	126.0	18.0
75	3.000	190	100.0	44.1	63.9	129.0	18.0
-	3.125	195	103.2	44.1	63.9	132.0	18.0
80	3.250	195	106.4	44.1	63.9	135.0	18.0
85	3.375	198	109.5	44.1	63.9	139.0	22.0
-	3.500	198	112.7	44.1	63.9	142.0	22.0
90	3.625	205	115.9	44.1	63.9	145.0	22.0
95	3.750	208	119.1	44.1	63.9	148.0	22.0
100	4.000	218	125.4	44.1	63.9	154.0	22.0



Mil çapı (mm)	d1	d2	d3	d4	d5	d6	d7	d8	d9	d10	d11	d12	R	L1	L2	L3	L4	L5	L6	L7	L8	L9	L10	L11	L12	L13	L14	L15	L16
6	-	-	-	-	-	-	-	10,6	13,1	-	-	-	-	-	-	-	-	-	-	-	-	-	-	-	-	-	9	7,1	-
8	-	-	-	-	-	-	-	13	17,1	-	-	-	-	-	-	-	-	-	-	-	-	-	-	-	-	-	9	7,1	-
10	15,5	19,2	17	21	3	-	-	14	18,1	11	24,6	-	1,2	7,5	6,6	1,2	3,8	7,5	6,6	1,5	4	-	-	17,5	10	8,5	9	7,1	-
12	17,5	21,6	19	23	3	-	-	16,5	20,6	13,5	27,8	-	1,2	6,5	5,6	1,2	3,8	7,5	6,6	1,5	4	-	-	17,5	10	8,5	10	7,6	-
14	20,5	24,6	21	25	3	-	-	19	23,1	17	30,95	-	1,2	6,5	5,6	1,2	3,8	7,5	6,6	1,5	4	12,5	12	17,5	10	8,5	10	7,6	-
15	20,5	24,6	-	-	-	-	-	21	26,9	17	30,95	-	1,2	7,5	6,6	1,2	3,8	-	-	-	-	-	-	-	-	-	11	8,6	-
16	22	28	23	27	3	-	-	21	26,9	17	30,95	30	1,5	8,5	7,5	1,5	5	7,5	6,6	1,5	4	12,5	12	17,5	10	8,5	11,5	9	-
18	23,4	30	27	33	3	-	-	25	30,9	20	34,15	32	1,5	9	8	1,5	5	8,5	7,5	2	5	14,5	13,5	19,5	11,5	9	12,5	10	-
19	-	-	-	-	-	-	-	25	30,9	20	34,15	-	1,5	-	-	-	-	-	-	-	-	-	-	-	-	-	-	-	-
20	29,5	35	29	35	3	-	-	25	30,9	21,5	35,7	34	1,5	8,5	7,5	1,5	5	8,5	7,5	2	5	14,5	13,5	19,5	11,5	9	12,5	9,5	-
22	29,5	35	31	37	3	-	-	30	35,4	23	37,36	36	1,5	8,5	7,5	1,5	5	8,5	7,5	2	5	14,5	13,5	19,5	11,5	9	12,5	9,5	-
24	32	38	33	39	3	-	-	30	35,4	26,5	40,5	-	1,5	8,5	7,5	1,5	5	8,5	7,5	2	5	14,5	13,5	19,5	11,5	9	12,5	9,5	-
25	32	38	34	40	3	-	-	33	38,2	26,5	40,5	39	1,5	8,5	7,5	1,5	5	8,5	7,5	2	5	14	13	19,5	11,5	9	12,5	9,5	-
28	36	42	37	43	3	44,65	50,57	38	43,3	29,5	47,65	43	1,5	10	9	1,5	5	8,5	7,5	2	5	13,5	12,5	19,5	11,5	9	14	11	24
30	39,2	45	39	45	3	47,83	53,75	38	43,3	32,5	50,8	48	1,5	11,5	10,5	1,5	5	8,5	7,5	2	5	13	12	19,5	11,5	9	14	11	24,5
32	42,2	48	42	48	3	47,83	53,75	38	43,3	32,5	50,8	-	1,5	11,5	10,5	1,5	5	8,5	7,5	2	5	13	12	19,5	11,5	9	14	11	24,5
33	44,2	5	42	48	3	47,83	53,75	45	53,5	36,5	54	-	1,5	12	11	1,5	5	8,5	7,5	2	5	13	12	19,5	11,5	9	-	-	24,5
35	46,2	52	44	50	3	51	56,92	45	53,5	36,5	54	53	1,5	12	11	1,5	5	8,5	7,5	2	5	13	12	19,5	11,5	9	14,5	11,5	24,5
38	49,2	55	49	56	4	54,18	60,1	52	60,5	39,5	57,15	-	1,5	11,3	10,36	1,5	5	10	9	2	6	14	13	22	14	9	14,5	11,5	26
40	52,2	58	51	58	4	60,53	66,45	52	60,5	42,5	60,35	58	1,5	11,8	10,8	1,5	5	10	9	2	6	14	13	22	14	9	14,5	11,5	26
42	-	-	-	-	-	-	-	52	60,5	46	63,5	-	2,5	13,2	12	2	6	-	-	-	-	-	-	-	-	-	17	14,3	-
43	53,3	62	54	61	4	63,7	69,62	52	60,5	46	63,5	-	2,5	13,2	12	2	6	10	9	2	6	14	13	22	14	9	-	-	26
45	55,3	64	56	63	4	63,7	69,62	57	65,5	46	63,5	63	2,5	12,8	11,6	2	6	10	9	2	6	14	13	22	14	9	17	14,3	26
48	59,7	68,4	59	66	4	66,88	72,8	57	65,5	49	66,7	-	2,5	12,8	11,6	2	6	10	9	2	6	14	13	22	14	9	17	14,3	26
50	60,8	69,3	62	70	4	70,05	75,97	64	72,5	52	69,85	68	2,5	12,8	11,6	2	6	10,5	9,5	2,5	6	14,5	13,5	23	15	9	17	14,3	26,5
53	63,8	72,3	65	73	4	76,4	82,32	-	55,5	73,05	-	2,5	13,5	12,3	2	6	12	11	2,5	6	14,5	13,5	23	15	9	-	14,3	26,5	
55	66,5	75,4	67	75	4	76,4	82,32	64	72,5	58,5	76,25	73	2,5	14,5	13,3	2	6	12	11	2,5	6	14,5	13,5	23	15	9	18	15,3	28,5
58	69,5	78,4	70	78	4	79,58	85,5	-	61,5	79,4	-	2,5	14,5	13,3	2	6	12	11	2,5	6	14,5	13,5	23	15	9	18	15,3	28,5	
60	71,5	80,4	72	80	4	82,75	88,67	72	79,3	61,5	79,4	79	2,5	14,5	13,3	2	6	12	11	2,5	6	14,5	13,5	23	15	9	18	15,3	28,5
65	76,5	85,4	77	85	4	85,93	91,85	77	84,5	68	92,1	86	2,5	14,2	13	2	6	12	11	2,5	6	14,2	13,5	23	15	9	18	15,3	28,5
68	82,7	91,5	81	90	4	85,93	91,85	-	71	95,25	-	2,5	14,9	13,7	2	6	12,5	11,3	2,5	7	14,2	13,5	26	18	9	19	16	28,5	
70	83	92	83	92	4	89,1	95,02	82	89,5	71	95,25	91	2,5	14,2	13	2	6	12,5	11,3	2,5	7	15,2	14,5	26	18	9	18	15,3	30,5
75	90,2	99	88	97	4	98,63	104,55	87	94,5	77,5	101,6	96	2,5	15,2	14	2	6	12,5	11,3	2,5	7	15,2	14,5	26	18	9	18	15,3	30,5
80	95,2	104	95	105	4	101,8	107,72	92	99,5	84	114,3	105	2,5	16,2	15	2	6	13	12	3	7	15,7	15	-	18,2	9	19	16,3	30,2
85	100,2	109	100	110	4	108,2	114,07	98	105,5	87	117,5	110	2,5	16	14,8	2	6	15	14	3	7	15,7	15	26,2	18,2	9	-	-	30,2
90	105,2	114	105	115	4	114,5	120,42	105	111,5	93,5	123,9	115	2,5	16	14,8	2	6	15	14	3	7	15,7	15	26,2	18,2	9	-	-	30,2
95	111,6	120,3	110	120	4	117,7	123,6	110	116,5	96,5	127	120	2,5	17	15,8	2	6	15	14	3	7	15,7	15	25,2	17,2	9	-	-	29,2
100	114,5	123,3	115	125	4	124	129,95	114	119,5	103	133,4	125	2,5	17	15,8	2	6	15	14	3	7	15,7	15	25,2	17,2	9	-	-	29,2



D16



D45



D50



D55



D60



D62



D66

Mil çapı (mm)	L17	L18	L19	L20	L21	L22	L23	L24	L25	L26	L27	L28	L29	L30	L31	L32	a	b
6	-	-	-	-	-	-	-	4,5	1,2	2	-	-	-	-	-	-	-	-
8	-	-	-	-	-	-	-	5,5	1,2	2,8	-	-	-	-	-	-	-	-
10	-	-	-	-	-	-	-	5,5	1,2	2,8	9	7,5	6,6	-	-	-	-	-
12	-	-	-	-	-	-	6,8	5,5	1,2	2,8	9	7,5	6,6	-	-	-	-	-
14	-	-	-	-	-	-	7,5	6	1,2	2,8	10,5	9	6,6	-	-	-	-	-
15	-	-	-	-	-	-	7,5	7	1,3	3,7	10,5	9	-	-	-	-	-	-
16	-	-	-	-	-	-	8,5	7	1,3	3,7	10,5	9	6,6	8	1,5	6	-	-
18	-	-	-	-	15	7	9,5	8	1,3	3,7	10,5	9	7,5	8	2	6	-	-
19	-	-	-	-	15	7	9,5	8	1,3	3,7	10,5	9	-	-	-	-	-	-
20	-	-	-	-	15	7	9,5	8	1,3	3,7	10,5	9	7,5	8	2	6	-	-
22	-	-	-	-	15	7	9,5	8	1,8	3,7	10,5	9	7,5	8	2	6	-	-
24	-	-	-	-	15	7	10,5	8	1,8	3,7	10,5	9	7,5	8	2	6	-	-
25	-	-	-	-	15	7	11	8,5	1,8	3,7	10,5	9	7,5	8	2	6	-	-
28	8,5	24	6,6	22,6	15	7	12	9	1,8	3,7	12	10,5	7,5	8	2	6	9	8
30	9	24	6,6	22,6	15	7	12	9	1,8	3,7	12	10,5	7,5	8	2	7	9	8
32	9	24	6,6	22,6	15	7	12	9	1,8	3,7	12	10,5	7,5	-	-	-	9	8
33	9	24	6,6	22,6	15	7	14	11,5	2,1	5,4	12	10,5	7,5	-	-	-	9	8
35	9	24	6,6	22,6	15	7	14	11,5	2,1	5,4	12	10,5	7,5	10	2	8	9	8
38	11	24	6,6	22,6	16	8	14	11,5	2,1	5,4	12	10,5	9	-	-	-	9	8
40	11	24	6,6	22,6	16	8	14	11,5	2,1	5,4	12	10,5	9	10	2	8	9	8
42	-	-	-	-	-	-	-	-	-	-	-	-	-	-	-	-	9	8
43	11	24	6,6	22,6	16	8	14	11,5	2,1	5,4	12	10,5	9	-	-	-	9	8
45	11	24	6,6	22,6	16	8	15	11,5	2,1	5,4	12	10,5	9	10	2	8	9	8
48	11	24	6,6	22,6	16	8	15	11,5	2,1	5,4	12	10,5	9	-	-	-	9	8
50	12,5	24	6,6	22,6	17	9,5	15	11,5	2,1	5,4	13,5	12	9,5	10	2,5	8	9	8
53	12,5	24	6,6	22,6	17	9,5	15	11,5	2,1	5,4	13,5	12	11	-	-	-	9	8
55	12,5	26	6,6	24,6	17	9,5	15	11,5	2,1	5,4	13,5	12	11	12	2,5	10	11	8
58	12,5	26	6,6	24,6	18	10,5	15	11,5	2,1	5,4	13,5	12	11	-	-	-	11	8
60	12,5	26	6,6	24,6	18	10,5	19	11,5	2,1	5,4	13,5	12	11	12	2,5	10	11	8
65	12,5	26	6,6	24,6	18	10,5	18	11,5	2,1	5,4	16	14,5	11	12	2,5	10	11	8
68	12,5	26	6,6	24,6	18,5	11	-	11,5	2,1	5,4	16	14,5	11,3	-	-	-	11	8
70	14,5	26	6,6	24,6	19	11,5	-	11,5	2,1	5,4	16	14,5	11,3	12	2,5	10	11	8
75	14,5	26	6,6	24,6	19	11,5	-	11,5	2,1	5,4	16	14,5	11,3	12	2,5	10	11	8
80	14	26	6,6	24,6	19	11,5	-	11,5	2,1	5,4	20	18,5	12	14	3	12	11	8
85	14	26	6,6	24,6	19	11,5	-	13,5	2,6	5,4	20	18,5	14	14	3	12	11	8
90	14	26	6,6	24,6	20,5	13	-	13,5	2,6	5,4	20	18,5	14	14	3	12	11	8
95	14	26	6,6	24,6	20,5	13	-	13,5	2,6	5,4	20	18,5	14	14	3	12	11	8
100	14	26	6,6	24,6	20,5	13	-	13,5	2,6	5,4	20	18,5	14	14	3	12	11	8

Mil çapı (mm)	d13	d14	L33	L34	L35
3/8"	5/8"	7/8"	5/16"	0,05	1/4"
1/2"	3/4"	1"	5/16"	0,05	1/4"
5/8"	15/16"	1 1/4"	13/32"	0,05	11/32"
3/4"	1 1/16"	1 3/8"	13/32"	0,05	11/32"
7/8"	1 3/16"	1 1/2"	13/32"	0,05	11/32"
1"	1 5/16"	1 5/8"	7/16"	0,05	3/8"
1 1/8"	1 7/16"	1 3/4"	7/16"	0,05	3/8"
1 1/4"	1 9/16"	1 7/8"	7/16"	0,05	3/8"
1 3/8"	1 11/16"	2"	7/16"	0,05	3/8"
1 1/2"	1 13/16"	2 1/8"	7/16"	0,05	3/8"
1 5/8"	2"	2 3/8"	1/2"	0,05	7/16"
1 3/4"	2 1/8"	2 1/2"	1/2"	0,05	7/16"
1 7/8"	2 1/4"	2 5/8"	1/2"	0,05	7/16"
2"	2 3/8"	2 3/4"	9/16"	0,05	7/16"
2 1/8"	2 3/8"	3"	9/16"	0,05	1/2"
2 1/4"	2 7/16"	3 1/8"	9/16"	0,05	1/2"
2 3/8"	2 9/16"	3 1/4"	9/16"	0,05	1/2"
2 1/2"	2 11/16"	3 3/8"	9/16"	0,05	1/2"
2 5/8"	2 13/16"	3 3/8"	5/8"	0,1	9/16"
2 3/4"	2 15/16"	3 1/2"	5/8"	0,1	9/16"
2 7/8"	3 1/16"	3 3/4"	5/8"	0,1	9/16"
3"	3 3/16"	3 7/8"	5/8"	0,1	9/16"
3 1/8"	3 5/16"	4"	25/32"	0,1	21/32"
3 1/4"	3 7/16"	4 1/8"	25/32"	0,1	21/32"
3 3/8"	3 9/16"	4 3/4"	25/32"	0,1	21/32"
3 1/2"	3 11/16"	4 3/8"	25/32"	0,1	21/32"
3 5/8"	3 13/16"	4 1/2"	25/32"	0,1	21/32"
3 3/4"	3 15/16"	4 5/8"	25/32"	0,1	21/32"
3 7/8"	4 1/16"	4 3/4"	25/32"	0,1	21/32"
4"	4 3/16"	4 7/8"	25/32"	0,1	21/32"

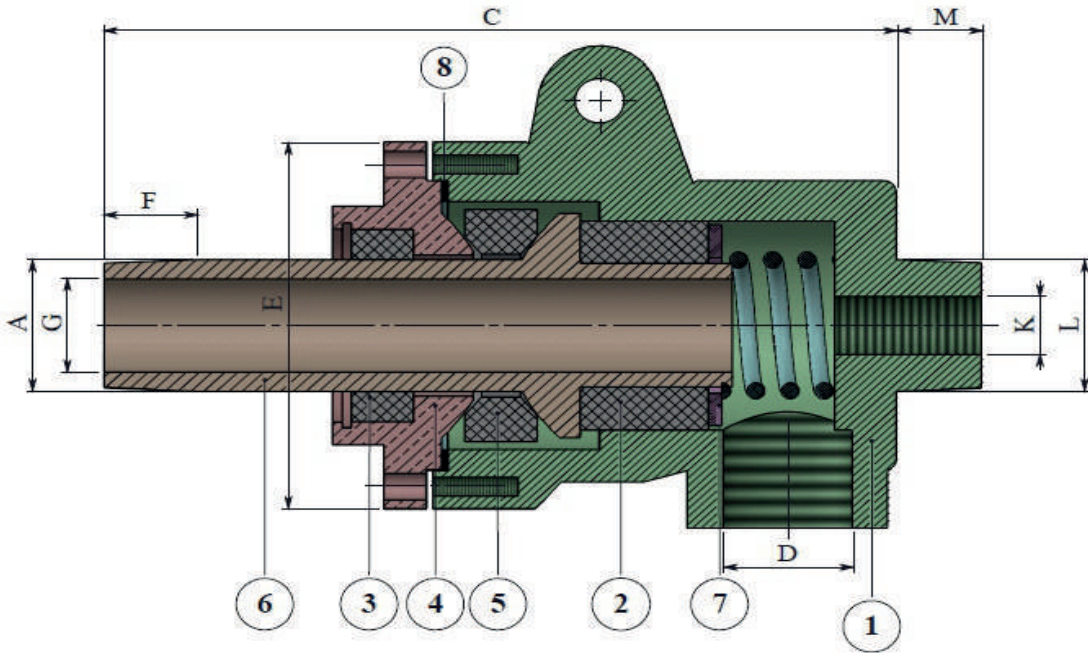


Çalışma Koşulları

Max Doymuş Buhar Basıncı	17 bar
Max Sıcaklık	207 °C
Max Kızgın Yağ Basıncı	17 bar
Max Sıcaklık	230°C
Max Devir	250 d/dk

Max basınç ve max hız aynı anda kullanılmamalıdır

No	Adet	Parça İsmi
1	1	Gövde
2	1	Alt Baskı Karbonu
3	1	Boğaz Karbonu
4	1	Kapak
5	1	Küresel Karbon
6	1	Döner Boru
7	1	Baskı Pulu
8	1	Conta
9	6	Vida



DN	A	Ürün Kodu		C	D	E	F	G	K	L	M				
		Buhar	Kızgın Yağ												
15	1/2"	DB300	DB500	157	1/2"	Q83	20	Q12	1/8"	1/2"	20				
20	3/4"	DB300	DB500	157	3/4"	Q83	20	Q18	1/4"	3/4"	20				
25	1"	DB300	DB500	185	1"	Q95	22	Q24	3/8"	1"	20				
32	1-1/4"	DB300	DB500	213	1/1.4"	Q110	25	Q29	1/2"	1.1/4"	20				
40	1-1/2"	DB300	DB500	235	1.1/2"	Q120	25	Q36	3/4"	1.1/2"	22				
50	2"	DB300	DB500	271	2"	Q140	30	Q48	1"	2"	22				
65															
80															

Güncel ölçü ve diğer özellikler için firmamız ile irtibata geçiniz..

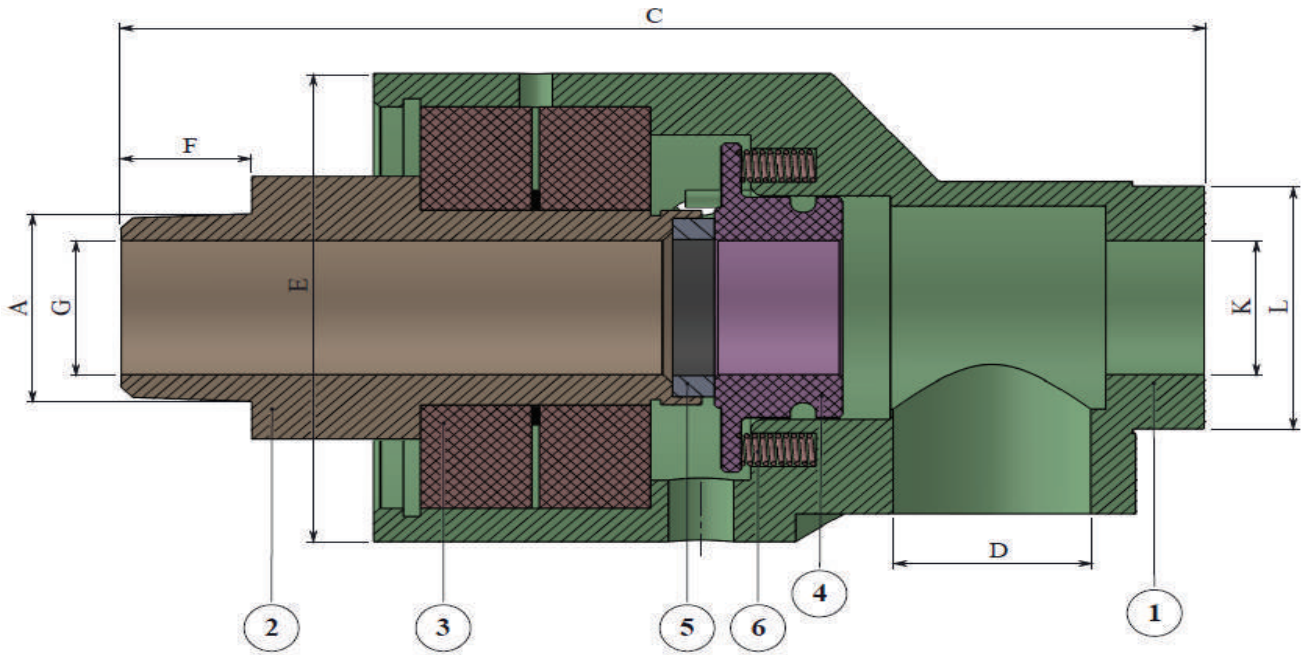


Çalışma Koşulları

Basınç	10 bar
Devir	750 d/dk
Sıcaklık	Max 120°C

Max basınç ve max hız aynı anda kullanılmamalıdır

No	Adet	Parça İsmi
1	1	Gövde
2	1	Döner Boru
3	2	Rulman
4	1	Sabit Eleman
5	1	Döner Boru Yüzey Ringi
6	6	Kurt Yay



DN	A	Ürün Kodu		C	D	E	F	G	K	L				
		Su												
	3/8"	DB100		96	3/8"	Q44	15	Q9	1/4"	Q25				
	1/2"	DB100		117	1/2"	Q56	15	Q12	3/8"	Q23				
	3/4"	DB100		145	3/4"	Q66	18	Q18	1/2"	Q35				
	1"	DB100		165	1"	Q84	20	Q24	3/4"	Q43				
	1.1/4"	DB100		202	1.1/4"	Q106	25	Q30	1"	Q49				
	1.1/2"	DB100		224	1.1/2"	Q110	30	Q36	1.1/4"	Q59				
	2"	DB100		243	2"	Q116	35	Q48	1.1/2"	Q74				

Güncel ölçü ve diğer özellikler için firmamız ile irtibata geçiniz..

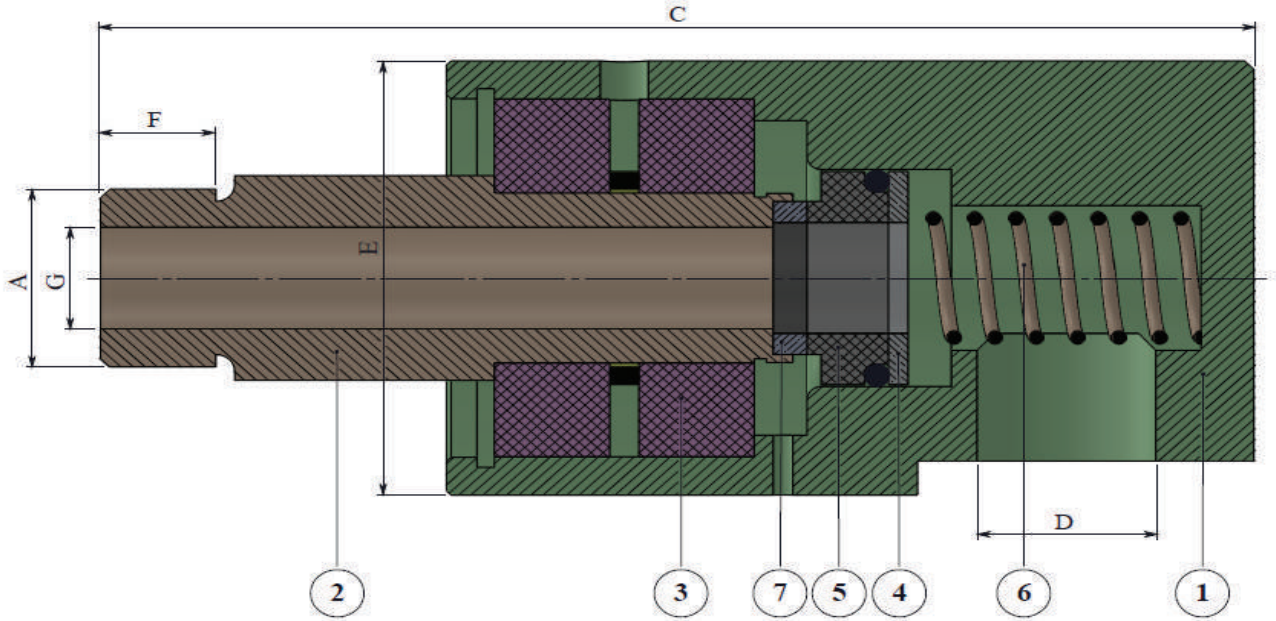


Çalışma Koşulları

Basınç	10 bar
Devir	2500 d/dk
Sıcaklık	Max 60

Max basınç ve max hız aynı anda kullanılmamalıdır

No	Adet	Parça İsmi
1	1	Gövde
2	1	Döner Boru
3	2	Rulman
4	1	Yay üstü pulu
5	1	Sabit Eleman
6	1	Yay
7	1	Döner Boru Karbon Ring



DN	A	Ürün Kodu		C	D	E	F	G									
		Hava															
	3/8"	DB700		103	3/8"	Q44	12	Q9									
	1/2"			120	1/2"	Q51	12	Q12									
	3/4"			138	3/4"	Q60	18	Q17									
	1"			154	1"	Q74	20	Q21									

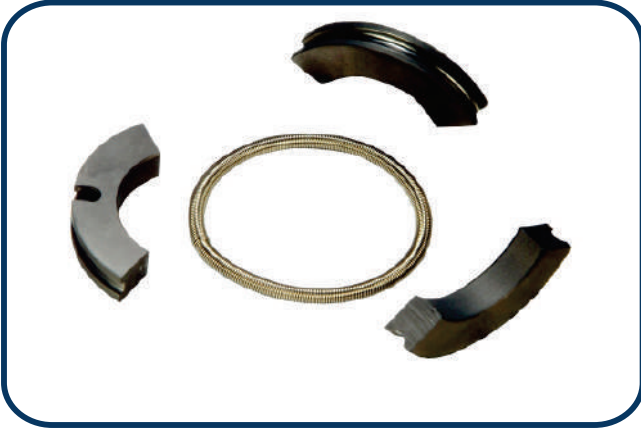
Güncel ölçü ve diğer özellikler için firmamız ile irtibata geçiniz



KARBON PALETLER



BURÇ VE EKSENEL YATAKLAR

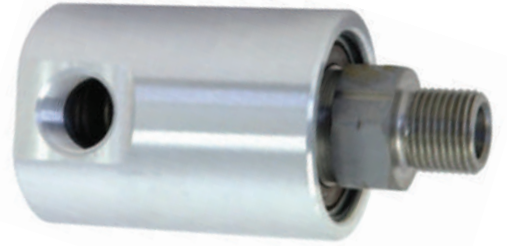
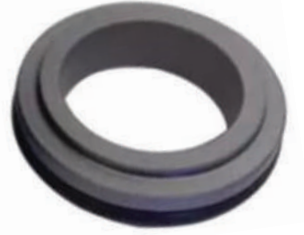


BUHAR TÜRBİN KARBONLARI



KÜRESEL KARBONLAR






STARMES
SIZDIRMAZLIK ELM. SAN. ve TIC. LTD. ŐTİ.